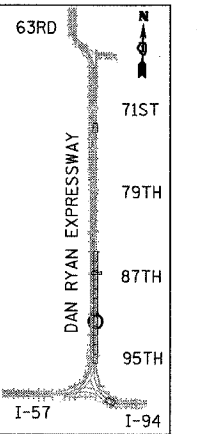
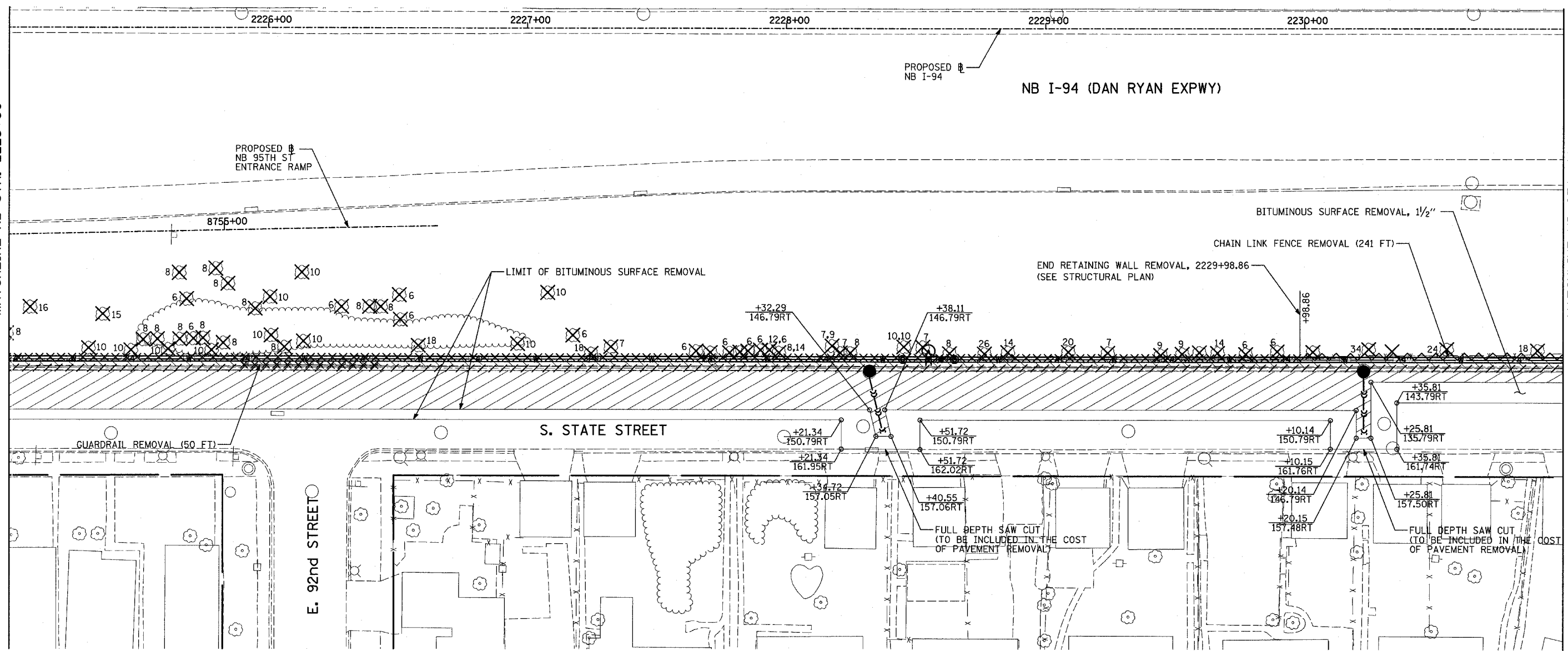
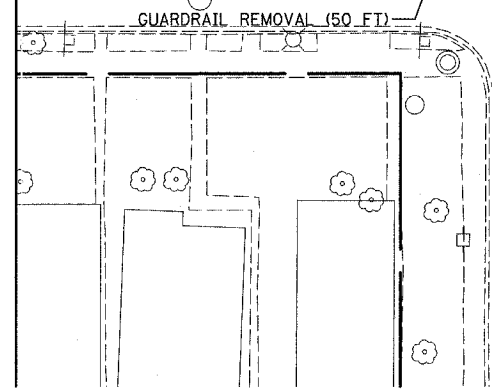


MATCHLINE NB STA. 2225+00

MATCHLINE NB STA. 2231+00



LOCATION MAP



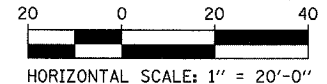
E. 92nd STREET

**LEGEND:**

- PAVEMENT REMOVAL
- PAVED SHOULDER REMOVAL
- SIDEWALK REMOVAL
- DRIVEWAY REMOVAL
- COMB CONC CURB & GUTTER REMOVAL
- CHAIN LINK FENCE REMOVAL
- RETAINING WALL/GUARDRAIL REMOVAL
- TREE REMOVAL (UNITS) (NO UNIT SHOWN = <6)
- LIGHT POLE & FOUNDATION REMOVAL
- STATION/OFFSET

**NOTES:**

1. SEE SEPARATE PLANS FOR WATER MAIN INSTALLATION DETAILS.
2. SEE SEPARATE PLANS FOR SEWER INSTALLATION DETAILS.
3. ALL STATION/OFFSET/RADIUS CALLOUTS MEASURED TO EDGE OF PAVEMENT UNLESS OTHERWISE NOTED.
4. STATIONS AND OFFSETS MEASURED FROM MAINLINE ALIGNMENT.



REVISIONS	
NAME	DATE

ILLINOIS DEPARTMENT OF TRANSPORTATION  
**F.A.I. 94 (DAN RYAN EXPRESSWAY)**  
**EXISTING PLAN - STATE ST.**  
**NB I-94 STA. 2225+00 TO 2231+00**

SCALE: 1"=20'  
 DATE: OCTOBER 4, 2004

DRAWN BY: JJS  
 CHECKED BY: MAG