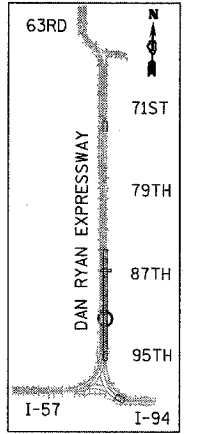
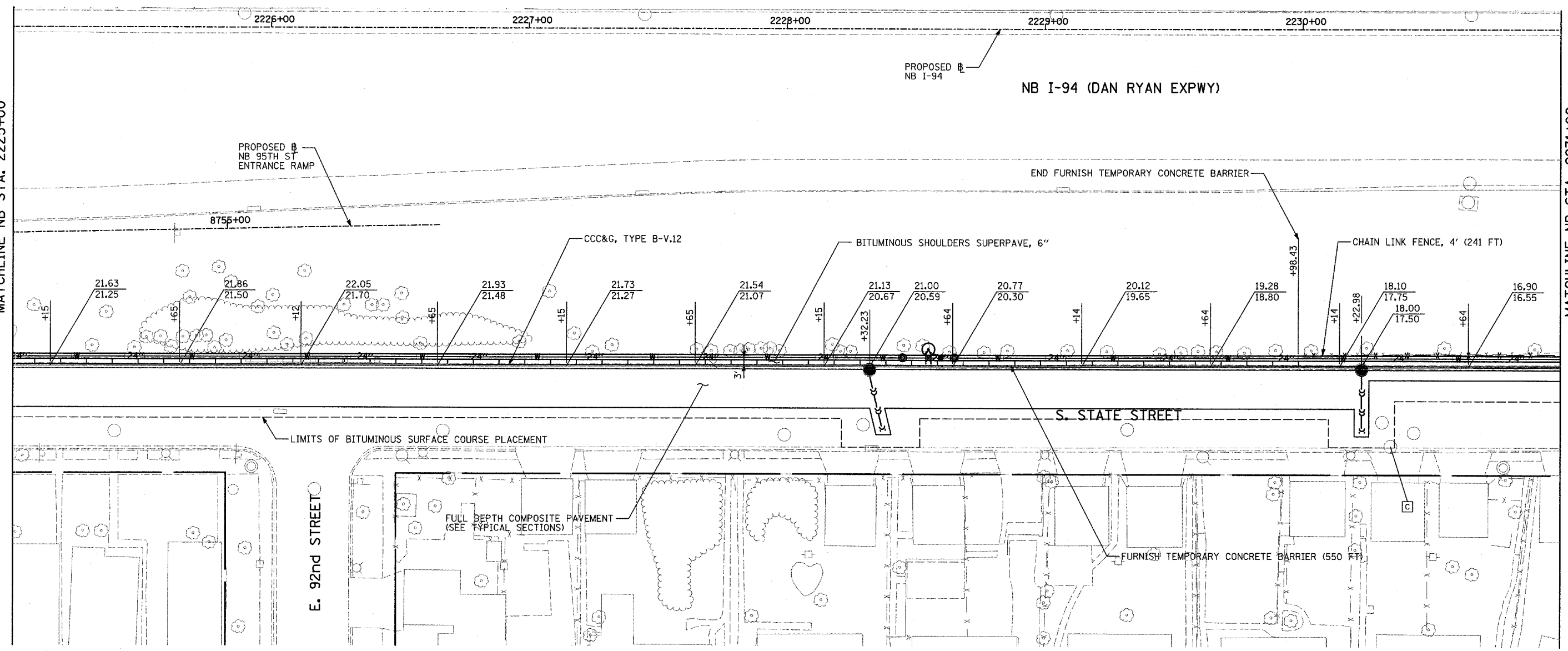


F.A.I. RTE.	SECTION	COUNTY	TOTAL SHEETS	SHEET NO.
94	1516.1-I-1	COOK	195	33
STA. 2016+35		TO STA. 2353+03		
FED. ROAD DIST. NO.	ILLINOIS	FED. AID PROJECT		

62872

MATCHLINE NB STA. 2225+00

MATCHLINE NB STA. 2231+00



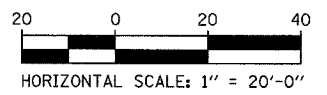
LOCATION MAP

LEGEND:

- ☐ STRUCTURE TO BE CLEANED
- Ⓐ FRAME AND GRATE TO BE ADJUSTED
- +XX.XX
XX.XXRT STATION/OFFSET

NOTES:

1. SEE SEPARATE PLANS FOR WATER MAIN INSTALLATION DETAILS.
2. SEE SEPARATE PLANS FOR SEWER INSTALLATION DETAILS
3. ALL STATION/OFFSET/RADIUS CALLOUTS MEASURED TO EDGE OF PAVEMENT UNLESS OTHERWISE NOTED.
4. STATIONS AND OFFSETS MEASURED FROM MAINLINE ALIGNMENT.



REVISIONS	
NAME	DATE

ILLINOIS DEPARTMENT OF TRANSPORTATION
F.A.I. 94 (DAN RYAN EXPRESSWAY)
PROPOSED PLAN - STATE ST.
NB I-94 STA. 2225+00 TO 2231+00
 SCALE: 1"=20'
 DATE: OCTOBER 4, 2004
 DRAWN BY: JJS
 CHECKED BY: MAG

TYLIN INTERNATIONAL

17/12/2004 07:56:35 AM