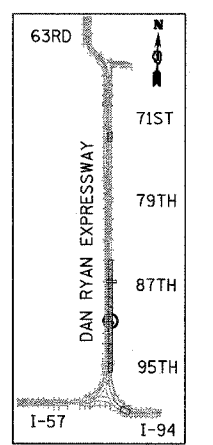
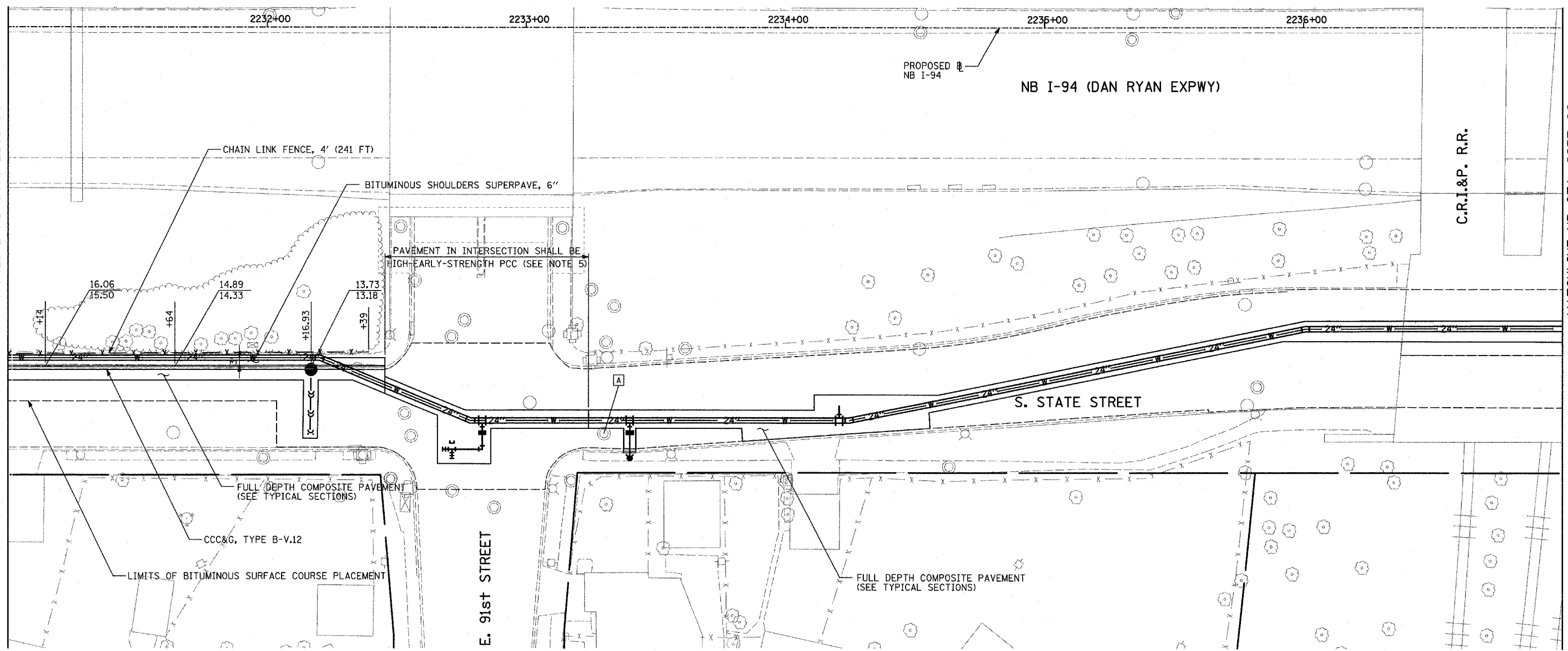


F.A.I. RTE.	SECTION	COUNTY	TOTAL SHEETS	SHEET NO.
94	1516.1-1-1	COOK	195	35
STA. 2016+35		TO STA. 2353+03		
FED. ROAD DIST. NO.	ILLINOIS	FED. AID PROJECT		

62872

MATCHLINE NB STA. 2231+00

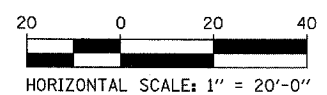
MATCHLINE NB STA. 2237+00



LOCATION MAP

- LEGEND:**
- [C] STRUCTURE TO BE CLEANED
 - [A] FRAME AND GRATE TO BE ADJUSTED
 - +XX.XX
XX.XXRT STATION/OFFSET

- NOTES:**
- SEE SEPARATE PLANS FOR WATER MAIN INSTALLATION DETAILS.
 - SEE SEPARATE PLANS FOR SEWER INSTALLATION DETAILS
 - ALL STATION/OFFSET/RADIUS CALLOUTS MEASURED TO EDGE OF PAVEMENT UNLESS OTHERWISE NOTED.
 - STATIONS AND OFFSETS MEASURED FROM MAINLINE ALIGNMENT.
 - CONCRETE FOR HIGH-EARLY-STRENGTH PORTLAND CEMENT CONCRETE BASE COURSE 10 1/2" SHALL BE CLASS PP AND MEET THE REQUIREMENTS OF ARTICLE 1020.05 (g)(1)



REVISIONS	
NAME	DATE

ILLINOIS DEPARTMENT OF TRANSPORTATION
F.A.I. 94 (DAN RYAN EXPRESSWAY)
PROPOSED PLAN - STATE ST.
NB I-94 STA. 2231+00 TO 2237+00

SCALE: 1"=20'
DATE: OCTOBER 4, 2004

DRAWN BY: JJS
CHECKED BY: MAG

TYLIN INTERNATIONAL

P:\02373\road\94\94p17.dwg 12/08/2004 07:56:47 AM