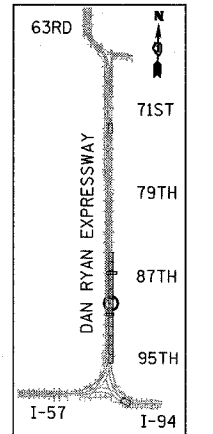
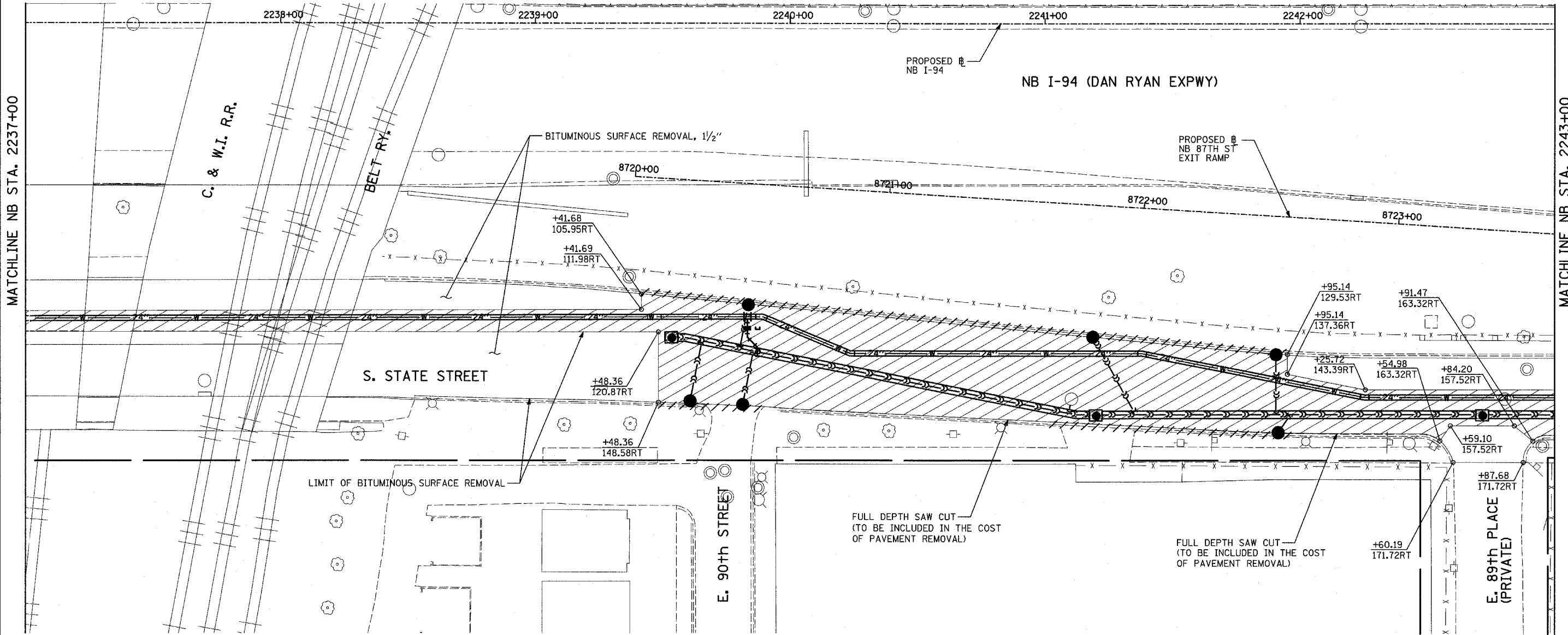


F.A.I. RTE.	SECTION	COUNTY	TOTAL SHEETS	SHEET NO.
94	1516.1-I-1	COOK	195	36
STA. 2016+35		TO STA. 2353+03		
FED. ROAD DIST. NO.	ILLINOIS	FED. AID PROJECT		
62872				



LOCATION MAP

MATCHLINE NB STA. 2237+00

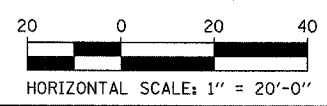
MATCHLINE NB STA. 2243+00

LEGEND:

- PAVEMENT REMOVAL
- PAVED SHOULDER REMOVAL
- SIDEWALK REMOVAL
- DRIVEWAY REMOVAL
- COMB CONC CURB & GUTTER REMOVAL
- CHAIN LINK FENCE REMOVAL
- RETAINING WALL/GUARDRAIL REMOVAL
- TREE REMOVAL (UNITS) (NO UNIT SHOWN = <6)
- LIGHT POLE & FOUNDATION REMOVAL
- STATION/OFFSET

NOTES:

1. SEE SEPARATE PLANS FOR WATER MAIN INSTALLATION DETAILS.
2. SEE SEPARATE PLANS FOR SEWER INSTALLATION DETAILS
3. ALL STATION/OFFSET/RADIUS CALLOUTS MEASURED TO EDGE OF PAVEMENT UNLESS OTHERWISE NOTED.
4. STATIONS AND OFFSETS MEASURED FROM MAINLINE ALIGNMENT.



REVISIONS	
NAME	DATE

ILLINOIS DEPARTMENT OF TRANSPORTATION
F.A.I. 94 (DAN RYAN EXPRESSWAY)
EXISTING PLAN - STATE ST.
NB I-94 STA. 2237+00 TO 2243+00

SCALE: 1"=20'
DATE: OCTOBER 4, 2004

DRAWN BY: JJS
CHECKED BY: MAG

TYLIN INTERNATIONAL

12/06/2004 08:07:59 AM