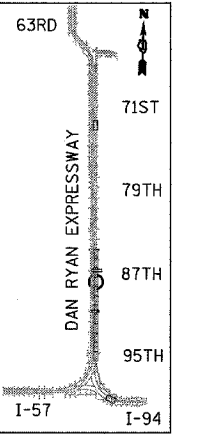
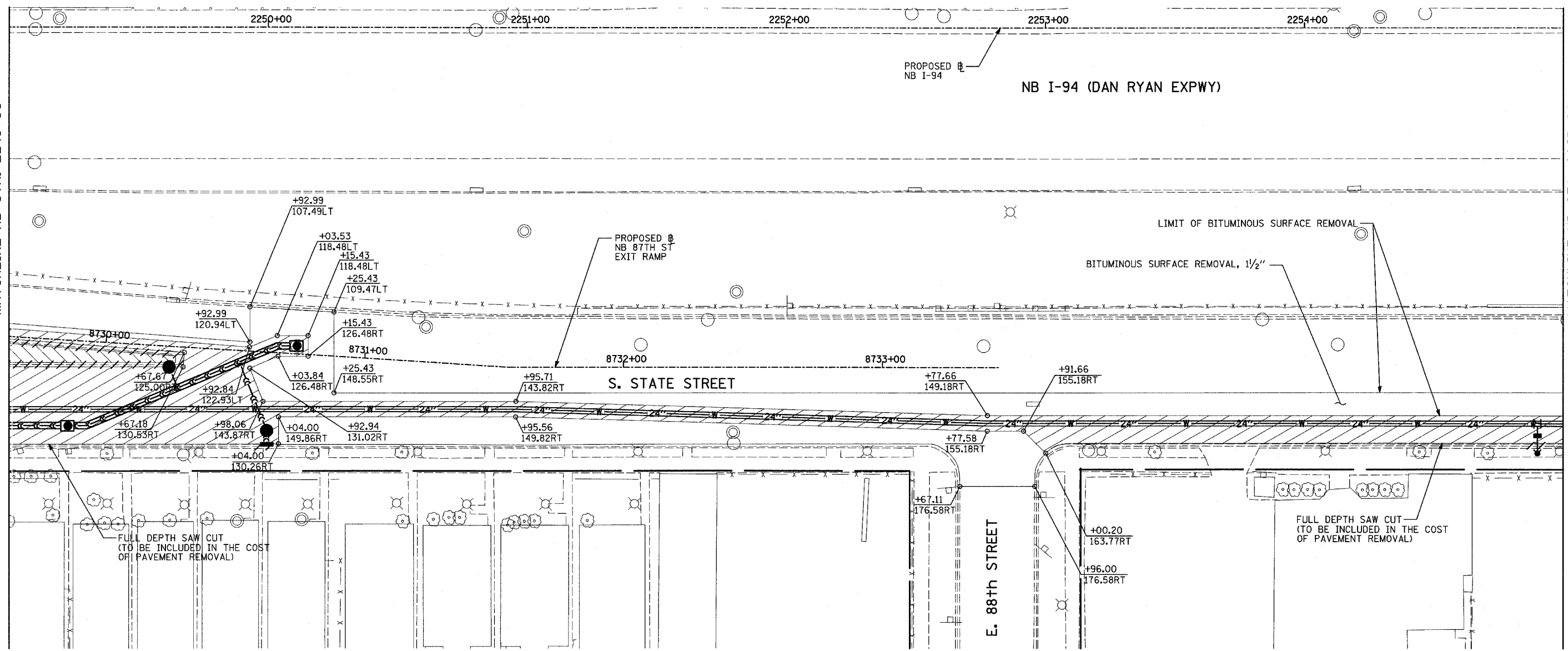


MATCHLINE NB STA. 2249+00

MATCHLINE NB STA. 2255+00



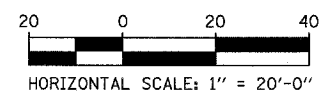
LOCATION MAP

**LEGEND:**

- PAVEMENT REMOVAL
- PAVED SHOULDER REMOVAL
- SIDEWALK REMOVAL
- DRIVEWAY REMOVAL
- COMB CONC CURB & GUTTER REMOVAL
- CHAIN LINK FENCE REMOVAL
- RETAINING WALL / GUARDRAIL REMOVAL
- TREE REMOVAL (UNITS) (NO UNIT SHOWN = <6)
- LIGHT POLE & FOUNDATION REMOVAL
- STATION/OFFSET

**NOTES:**

1. SEE SEPARATE PLANS FOR WATER MAIN INSTALLATION DETAILS.
2. SEE SEPARATE PLANS FOR SEWER INSTALLATION DETAILS
3. ALL STATION/OFFSET/RADIUS CALLOUTS MEASURED TO EDGE OF PAVEMENT UNLESS OTHERWISE NOTED.
4. STATIONS AND OFFSETS MEASURED FROM MAINLINE ALIGNMENT.



REVISIONS	
NAME	DATE

ILLINOIS DEPARTMENT OF TRANSPORTATION  
 F.A.I. 94 (DAN RYAN EXPRESSWAY)  
 EXISTING PLAN - STATE ST.  
 NB I-94 STA. 2249+00 TO 2255+00

SCALE: 1"=20'  
 DATE: OCTOBER 4, 2004

DRAWN BY: JJS  
 CHECKED BY: MAG

**TYLIN** INTERNATIONAL

11/12/2004 07:58:17 AM