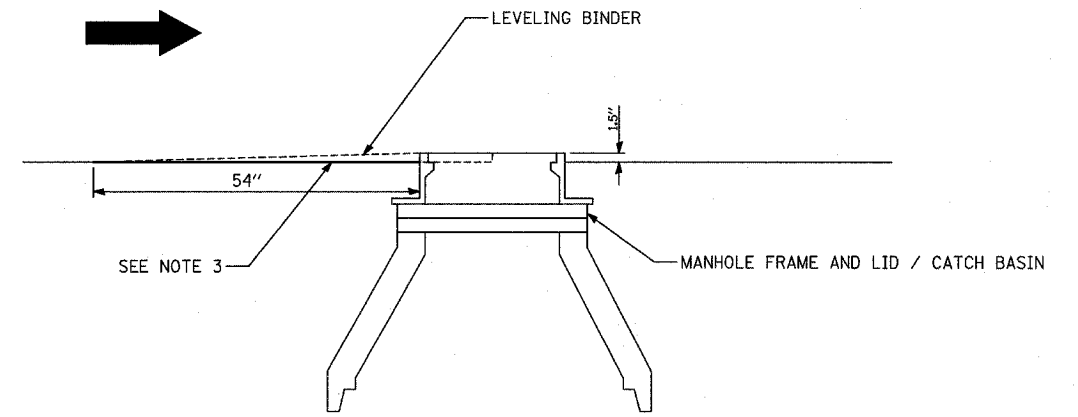
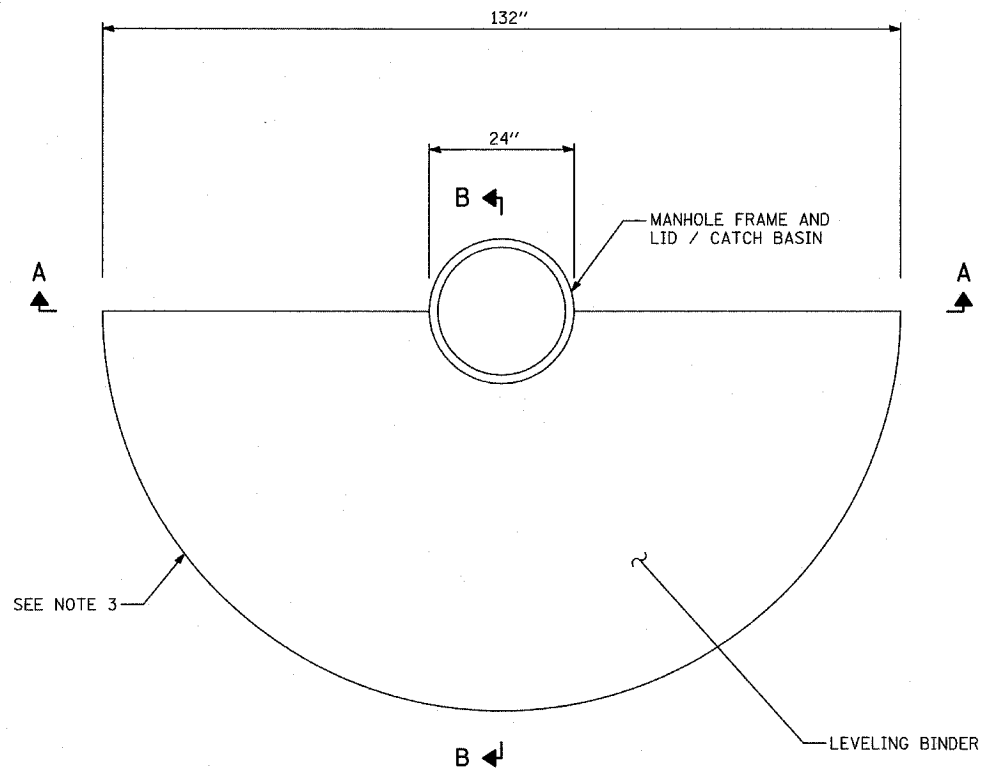


SECTION A-A
DETAIL 1



SECTION B-B
DETAIL 2



PLAN VIEW
DETAIL 3

NOTES:

1. TEMPORARY RAMPS TO BE PLACED DURING CONSTRUCTION ON THE APPROACH SIDE OF MANHOLES THAT ARE IN TIRE LINES.
2. TEMPORARY RAMPS NOT PAID FOR SEPERATELY, BUT SHALL BE INCLUDED IN THE COST OF LEVELING BINDER HAND METHOD.
3. PAPER OR POLYETHYLENE BOND BREAKER TO BE USED UNDER TEMPORARY RAMPS.
4. REMOVAL OF TEMPORARY RAMPS INCLUDED IN THE COST OF LEVELING BINDER HAND METHOD.

LEGEND

DIRECTION OF TRAFFIC

REVISIONS	
NAME	DATE

ILLINOIS DEPARTMENT OF TRANSPORTATION
F.A.I. 94 (DAN RYAN EXPRESSWAY)

**DETAIL OF TEMPORARY RAMP
AT MANHOLE OR CATCH BASIN**

SCALE: NONE
DATE: OCTOBER 4, 2004
DRAWN BY: PAW
CHECKED BY: TGB