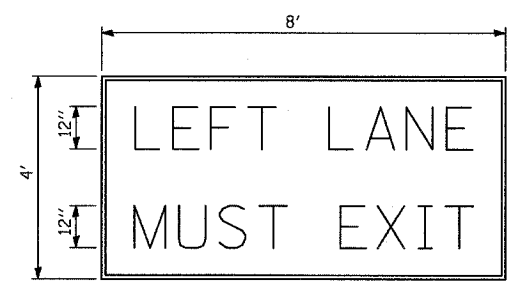
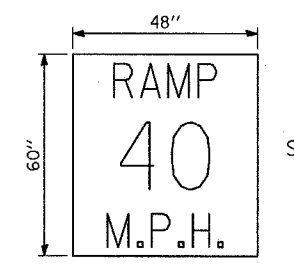


TRAFFIC STAGING FOR 91st STREET AT S. STATE STREET

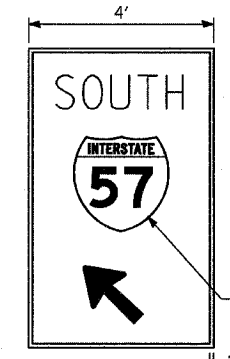


LEGEND - BLACK
 SIZE - 12" CAPS
 BACKGROUND - WHITE
 STA. 2010+00 LT
 STA. 2015+00 LT



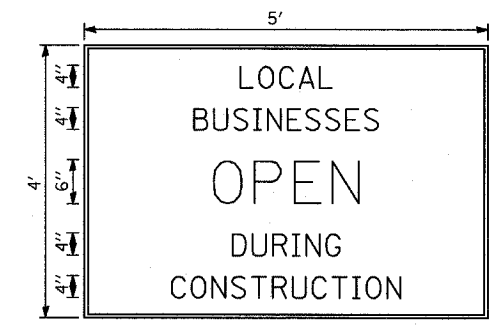
STA. 2019+00

W13-3
 SEE DETAIL "A" FROM DISTRICT 1



LEGEND - WHITE
 BACKGROUND - GREEN
 2 SIGNS
 STA. 2023+00
 STA. 2026+00 (GORE)

STANDARD SHIELD
 2" TYP

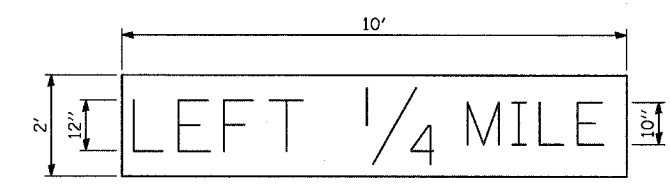


LEGEND - BLACK (SERIES E)
 BACKGROUND - WHITE

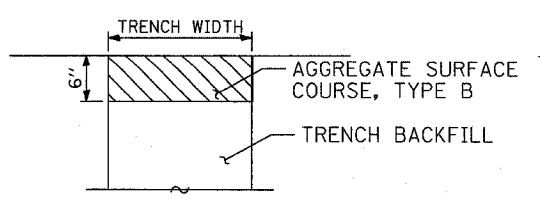
TO BE INSTALLED WHERE SHOWN ON THE PLANS.

SIGN SHALL BE PAID ACCORDING TO SPECIAL PROVISION FOR TEMPORARY INFORMATION SIGNING.

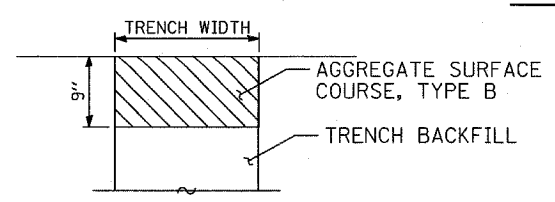
SIGN DETAILS



OVERHEAD SIGN OVERLAY DETAIL

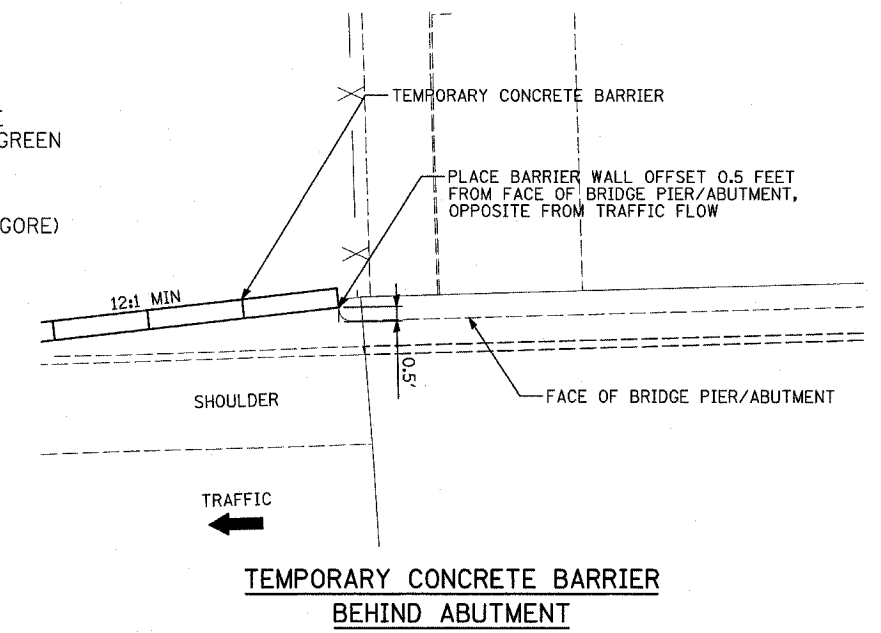


PRIVATE ENTRANCE

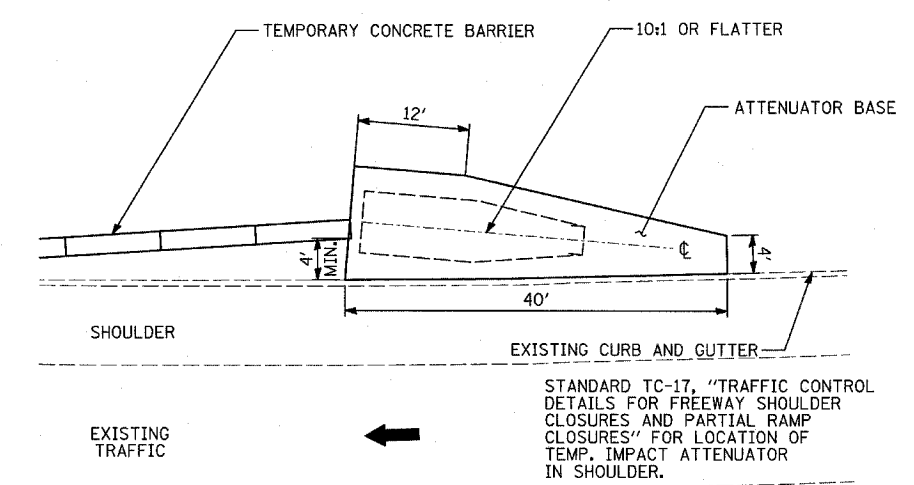


COMMERCIAL ENTRANCE

AGGREGATE SURFACE COURSE, TYPE B DETAIL



TEMPORARY CONCRETE BARRIER BEHIND ABUTMENT



TYPICAL ATTENUATOR BASE FOR TEMPORARY IMPACT ATTENUATOR (NON-REDIRECTIVE) ADJACENT TO SHOULDER

N.T.S.

| REVISIONS | |
|-----------|------|
| NAME | DATE |
| | |
| | |
| | |
| | |
| | |
| | |
| | |
| | |
| | |

ILLINOIS DEPARTMENT OF TRANSPORTATION
 F.A.I. 94 (DAN RYAN EXPRESSWAY)
 GENERAL NOTES
 CONSTRUCTION STAGING NOTES
 MAINTENANCE OF TRAFFIC DETAILS
 SHEET 4 OF 4

SCALE: NO SCALE
 DATE: OCTOBER 4, 2004
 DRAWN BY: JPA
 CHECKED BY: MAG, JPM