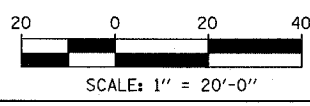
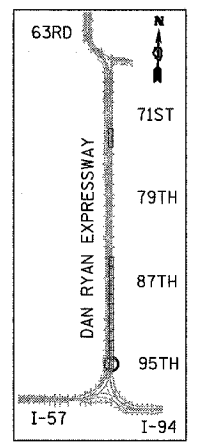
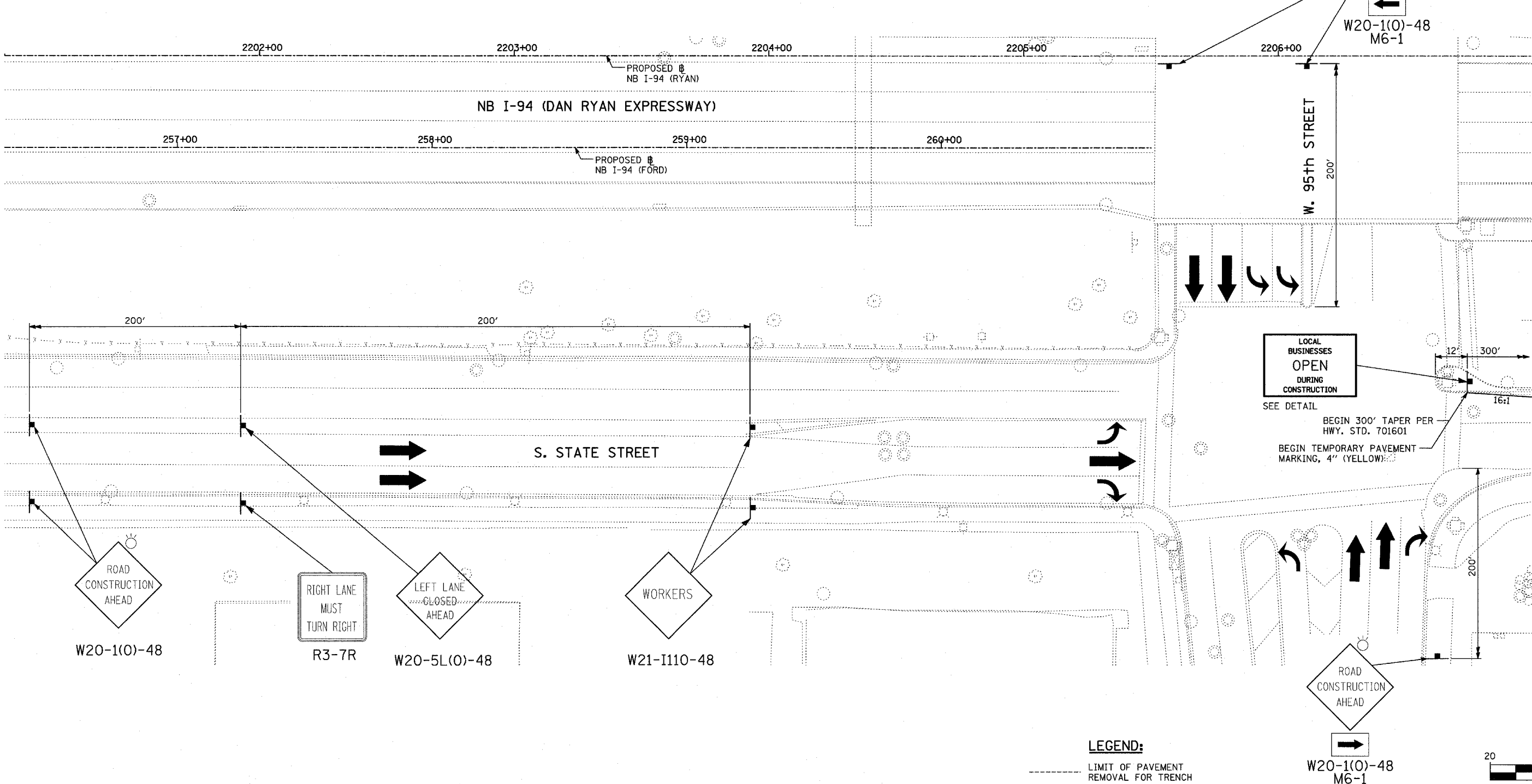


F.A.I. RTE.	SECTION	COUNTY	TOTAL SHEETS	SHEET NO.
94	1516.1-1-1	COOK	195	59
STA. 2016+35		TO STA. 2353+03		
FED. ROAD DIST. NO.	ILLINOIS	FED. AID PROJECT		

62872



**NOTE:**  
 ALL SIGNS AND MOUNTINGS SHALL BE INCLUDED IN THE COST OF TRAFFIC CONTROL AND PROTECTION (SPECIAL) FOR FRONTAGE ROADS AND TRAFFIC CONTROL AND PROTECTION (EXPRESSWAYS) FOR WESTBOUND I-94 TO I-57 CONNECTOR CONSTRUCTION EXCEPT THOSE SIGNS NOTED AS PAID FOR UNDER TEMPORARY INFORMATION SIGNING.

- LEGEND:**
- LIMIT OF PAVEMENT REMOVAL FOR TRENCH
  - ➔ TRAFFIC LANE
  - ▭ WORK ZONE
  - ⊥ BARRICADE, TYPE III
  - DRUM WITH MONO-DIRECTIONAL STEADY BURNING LIGHT
  - ➔ ARROW BOARD

REVISIONS	
NAME	DATE

ILLINOIS DEPARTMENT OF TRANSPORTATION  
 F.A.I. 94 (DAN RYAN EXPRESSWAY)  
**MAINTENANCE OF TRAFFIC**  
 NB I-94 STA. 2201+00 TO 2207+00  
 (STAGE 1 SHEET 1 OF 2)

SCALE: 1"=20'  
 DATE: OCTOBER 4, 2004

DRAWN BY: JPA  
 CHECKED BY: MPG

**TYLIN** INTERNATIONAL