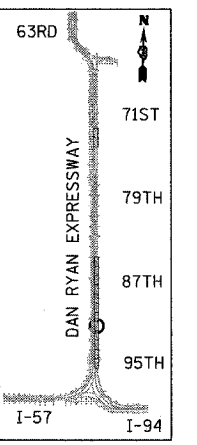
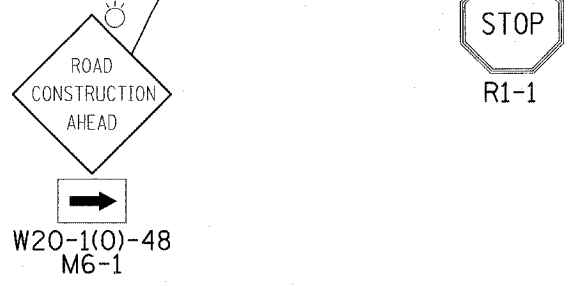


MATCHLINE NB STA. 2225+00.00

MATCHLINE NB STA. 2231+00.00



LOCATION MAP



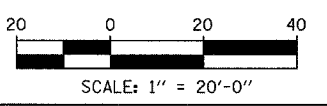
W20-1(0)-48
M6-1

LEGEND:

- LIMIT OF PAVEMENT REMOVAL FOR TRENCH
- TRAFFIC LANE
- WORK ZONE
- BARRICADE, TYPE III
- DRUM WITH MONO-DIRECTIONAL STEADY BURNING LIGHT
- ARROW BOARD

NOTE:

1. CONTRACTOR MUST STAGE THE CONSTRUCTION OF THE CATCH BASIN LATERALS SO THAT THE CATCH BASIN REMAINS FUNCTIONAL.



REVISIONS	
NAME	DATE

ILLINOIS DEPARTMENT OF TRANSPORTATION
F.A.I. 94 (DAN RYAN EXPRESSWAY)
MAINTENANCE OF TRAFFIC
NB I-94 STA. 2225+00 TO 2231+00
(STAGE 4 SHEET 3 OF 8)

SCALE: 1"=20'
DATE: OCTOBER 4, 2004
DRAWN BY: JPA
CHECKED BY: MPG