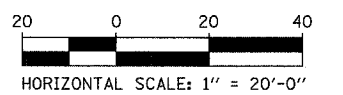
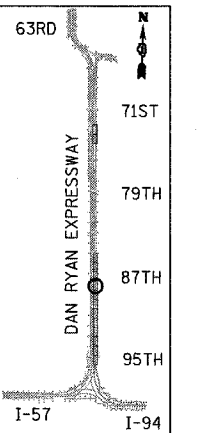
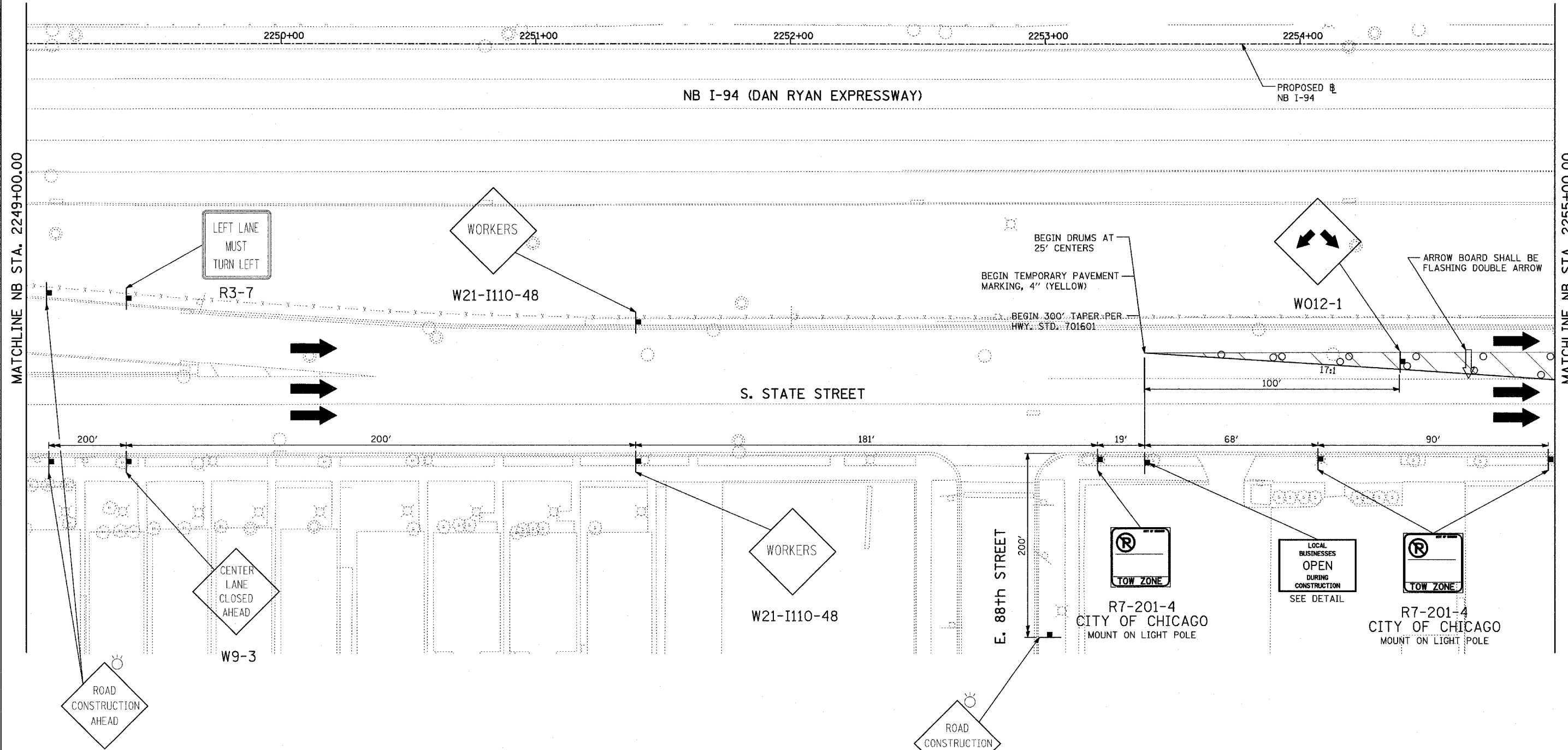


|                     |            |                  |              |           |
|---------------------|------------|------------------|--------------|-----------|
| F.A.I. RTE.         | SECTION    | COUNTY           | TOTAL SHEETS | SHEET NO. |
| 94                  | 1516.1-1-1 | COOK             | 195          | 89        |
| STA. 2016+35        |            | TO STA. 2353+03  |              |           |
| FED. ROAD DIST. NO. | ILLINOIS   | FED. AID PROJECT |              |           |
| 62872               |            |                  |              |           |



**LEGEND:**

- LIMIT OF PAVEMENT REMOVAL FOR TRENCH
- TRAFFIC LANE
- WORK ZONE
- BARRICADE, TYPE III
- DRUM WITH MONO-DIRECTIONAL STEADY BURNING LIGHT
- ARROW BOARD

| REVISIONS |      |
|-----------|------|
| NAME      | DATE |
|           |      |
|           |      |
|           |      |
|           |      |
|           |      |
|           |      |
|           |      |
|           |      |
|           |      |
|           |      |

ILLINOIS DEPARTMENT OF TRANSPORTATION  
 F.A.I. 94 (DAN RYAN EXPRESSWAY)  
 MAINTENANCE OF TRAFFIC  
 NB I-94 STA. 2249+00 TO 2255+00  
 (STAGE 8 SHEET 1 OF 2)

SCALE: 1"=20'  
 DATE: OCTOBER 4, 2004

DRAWN BY: JPA  
 CHECKED BY: MPG

**TYLIN**INTERNATIONAL