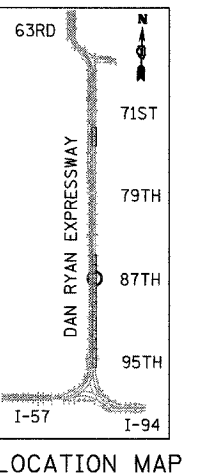
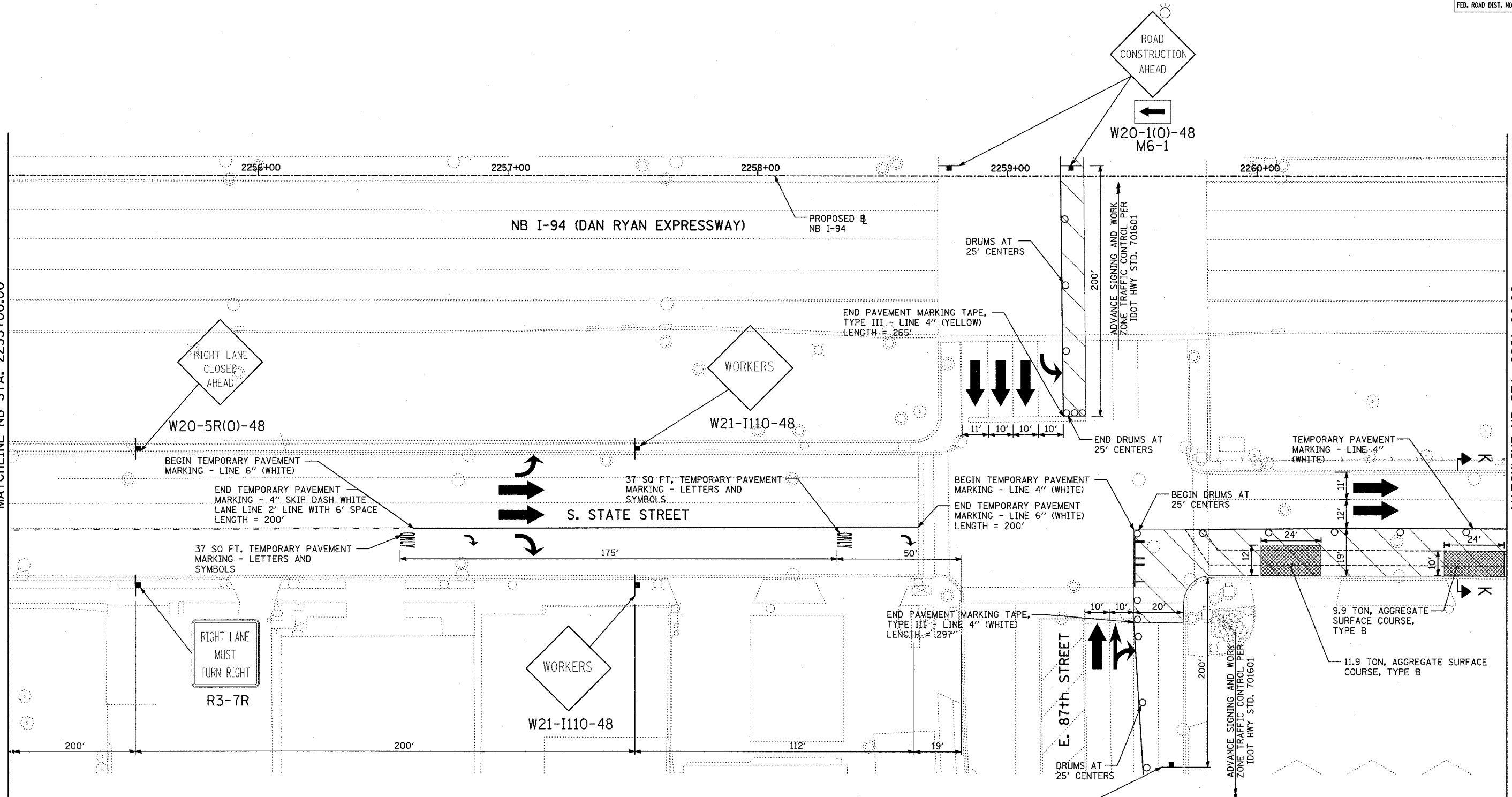


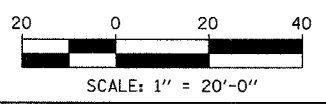
MATCHLINE NB STA. 2255+00.00

MATCHLINE NB STA. 2261+00.00



LEGEND:

- LIMIT OF PAVEMENT REMOVAL FOR TRENCH
- TRAFFIC LANE
- WORK ZONE
- BARRICADE, TYPE III
- DRUM WITH MONO-DIRECTIONAL STEADY BURNING LIGHT
- ARROW BOARD



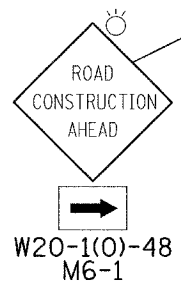
| REVISIONS | |
|-----------|------|
| NAME | DATE |
| | |
| | |
| | |
| | |
| | |
| | |
| | |

ILLINOIS DEPARTMENT OF TRANSPORTATION
 F.A.I. 94 (DAN RYAN EXPRESSWAY)
 MAINTENANCE OF TRAFFIC
 NB I-94 STA. 2255+00 TO 2261+00
 (STAGE 10 SHEET 2 OF 4)

SCALE: 1"=20'
 DATE: OCTOBER 4, 2004

DRAWN BY: JPA
 CHECKED BY: MPG

TYLIN INTERNATIONAL



17/12/2004 09:22:50 AM