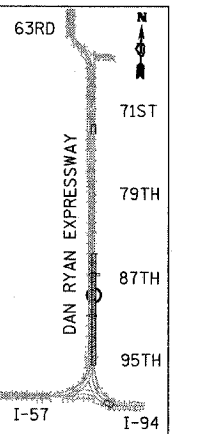
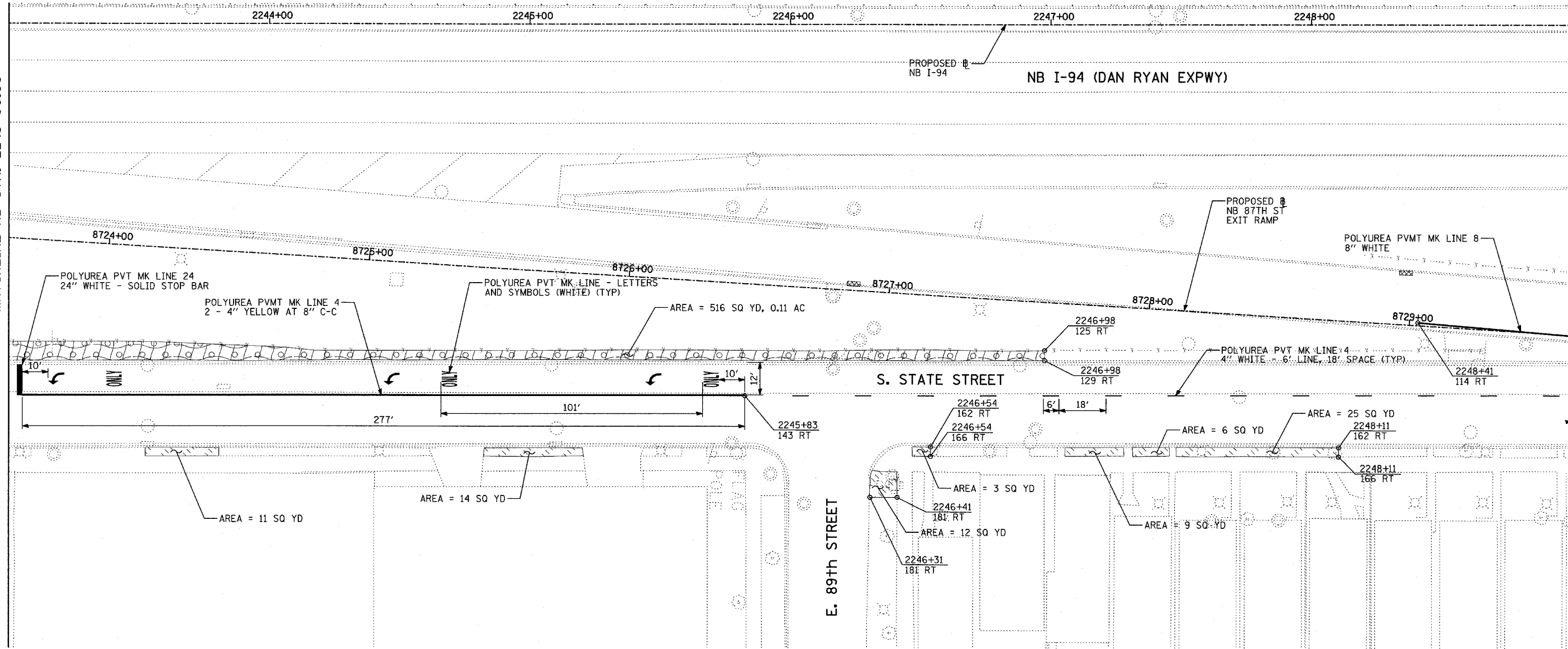


MATCHLINE NB STA. 2243+00.00

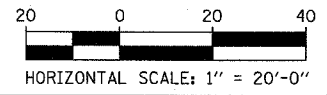
MATCHLINE NB STA. 2249+00.00



LEGEND:

- SODDING, SALT TOLERANT, NITROGEN, PHOSPHORUS, AND POTASSIUM FERTILIZER NUTRIENTS, TOPSOIL FURNISH AND PLACE, 4"
- EROSION CONTROL BLANKET, SEEDING, CLASS 2A, NITROGEN, PHOSPHORUS, AND POTASSIUM FERTILIZER NUTRIENTS, TOPSOIL FURNISH AND PLACE, 4"
- PERIMETER EROSION BARRIER (PEB)
- TEMPORARY FENCE
- INLET FILTER, TO BE INSTALLED IN OFF PROJECT DRAINAGE STRUCTURES ACCEPTING STORMWATER RUNOFF

TYLIN INTERNATIONAL



REVISIONS	
NAME	DATE

ILLINOIS DEPARTMENT OF TRANSPORTATION
F.A.I. 94 (DAN RYAN EXPRESSWAY)
EROSION CONTROL, LANDSCAPING,
& PAVEMENT MARKING
 NB I-94 STA. 2243+00 TO 2249+00.00
 SHEET 7 OF 14
 SCALE: 1"=20'
 DATE: OCTOBER 4, 2004
 DRAWN BY: RTM
 CHECKED BY: MPG

11/18/2004 04:37:08 P.M.