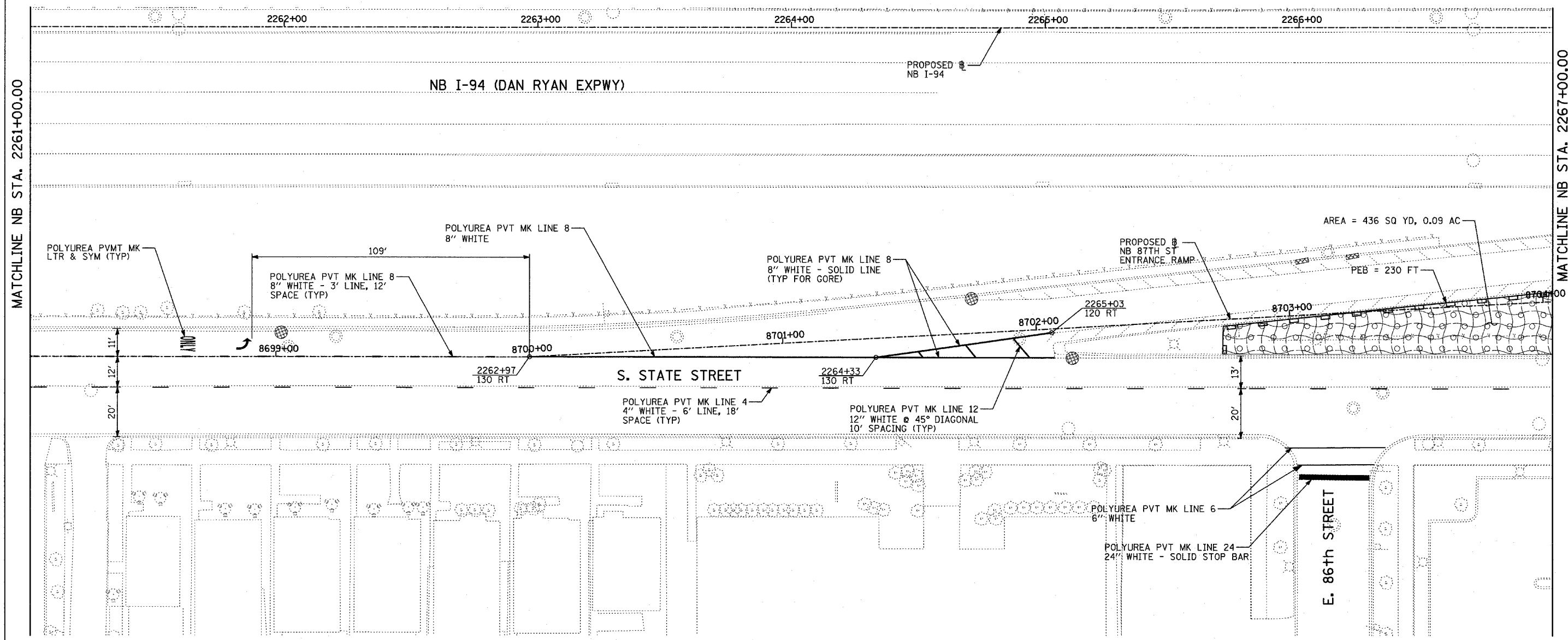


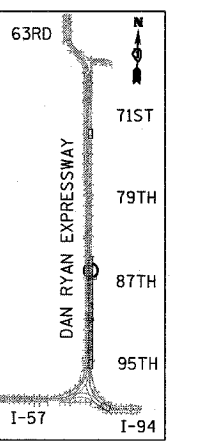
F.A.I. RTE.	SECTION	COUNTY	TOTAL SHEETS	SHEET NO.
94	1516.1-I-1	COOK	195	114
STA. 2016+35		TO STA. 2353+03		
FED. ROAD DIST. NO.	ILLINOIS	FED. AID PROJECT		

62872



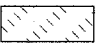
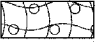
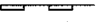
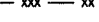
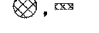
MATCHLINE NB STA. 2261+00.00

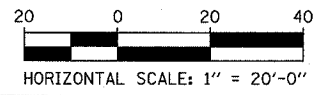
MATCHLINE NB STA. 2267+00.00



LOCATION MAP

LEGEND:

-  SODDING, SALT TOLERANT, NITROGEN, PHOSPHORUS, AND POTASSIUM FERTILIZER NUTRIENTS, TOPSOIL FURNISH AND PLACE, 4"
-  EROSION CONTROL BLANKET, SEEDING, CLASS 2A, NITROGEN, PHOSPHORUS, AND POTASSIUM FERTILIZER NUTRIENTS, TOPSOIL FURNISH AND PLACE, 4"
-  PERIMETER EROSION BARRIER (PEB)
-  - xxx - xx TEMPORARY FENCE
-  INLET FILTER, TO BE INSTALLED IN OFF PROJECT DRAINAGE STRUCTURES ACCEPTING STORMWATER RUNOFF



REVISIONS	
NAME	DATE

ILLINOIS DEPARTMENT OF TRANSPORTATION
F.A.I. 94 (DAN RYAN EXPRESSWAY)
**EROSION CONTROL, LANDSCAPING,
 & PAVEMENT MARKING**
 NB I-94 STA. 2261+00 TO 2267+00.00
SHEET 10 OF 14
 SCALE: 1"=20'
 DATE: OCTOBER 4, 2004
 DRAWN BY: RTM
 CHECKED BY: MPG

TYLIN INTERNATIONAL

11/12/2004 01:45:30 AM