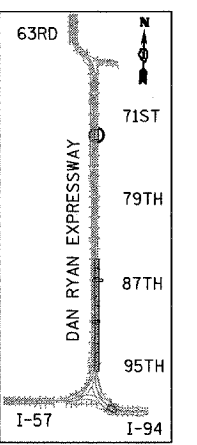
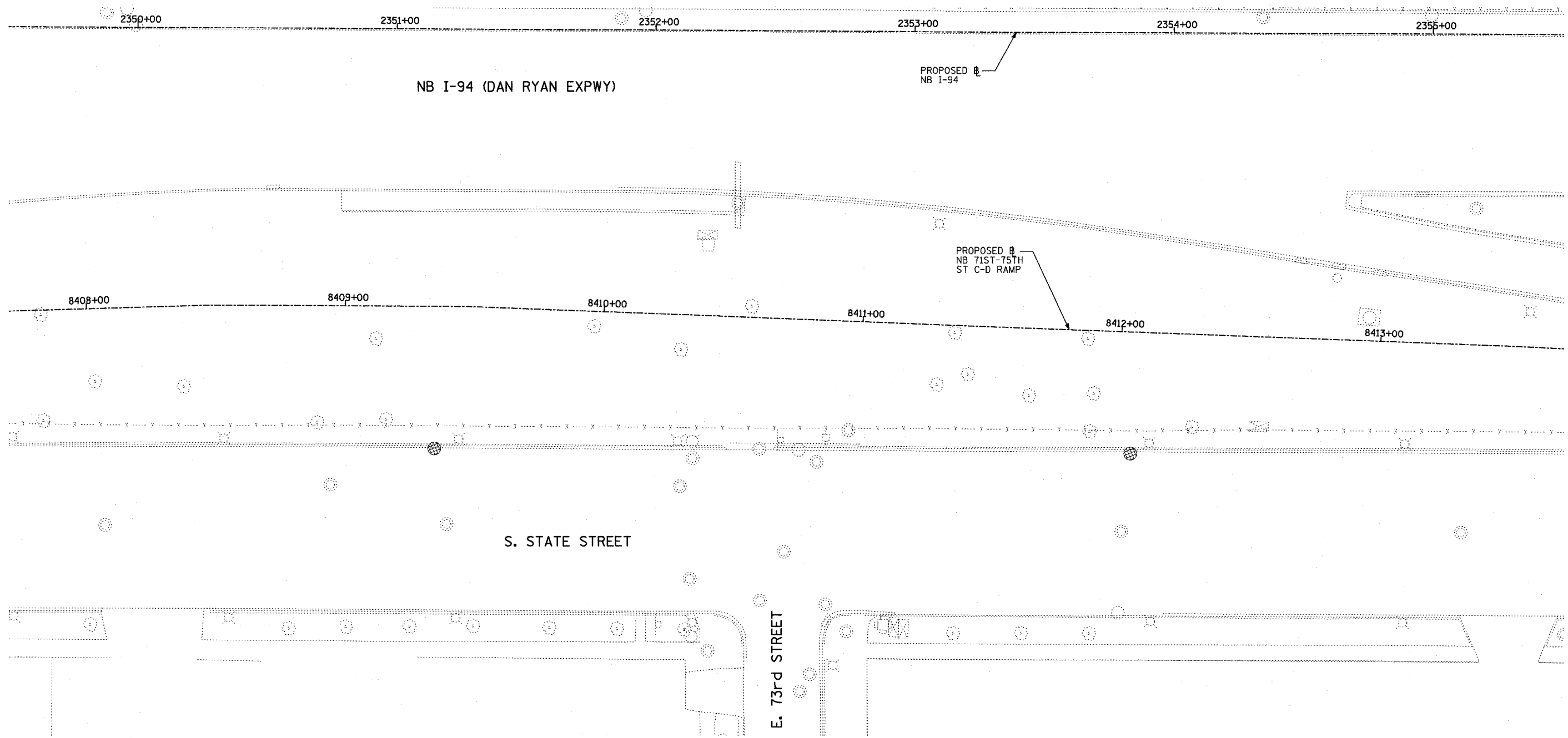
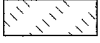
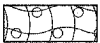
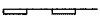
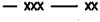
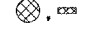


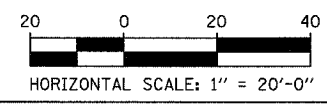
F.A.I. RTE.	SECTION	COUNTY	TOTAL SHEETS	SHEET NO.
94	1516.1-I-1	COOK	195	116
STA. 2016+35		TO STA. 2353+03		
FED. ROAD DIST. NO.	ILLINOIS	FED. AID PROJECT		
		62872		



LOCATION MAP

LEGEND:

-  SODDING, SALT TOLERANT, NITROGEN, PHOSPHORUS, AND POTASSIUM FERTILIZER NUTRIENTS, TOPSOIL FURNISH AND PLACE, 4"
-  EROSION CONTROL BLANKET, SEEDING, CLASS 2A, NITROGEN, PHOSPHORUS, AND POTASSIUM FERTILIZER NUTRIENTS, TOPSOIL FURNISH AND PLACE, 4"
-  PERIMETER EROSION BARRIER (PEB)
-  TEMPORARY FENCE
-  INLET FILTER, TO BE INSTALLED IN OFF PROJECT DRAINAGE STRUCTURES ACCEPTING STORMWATER RUNOFF



REVISIONS	
NAME	DATE

ILLINOIS DEPARTMENT OF TRANSPORTATION
 F.A.I. 94 (DAN RYAN EXPRESSWAY)
 EROSION CONTROL, LANDSCAPING,
 & PAVEMENT MARKING
 NB I-94 STA. 2349+50 TO 2355+50
 SHEET 12 OF 14

SCALE: 1"=20'
 DATE: OCTOBER 4, 2004

DRAWN BY: RTM
 CHECKED BY: MPG

TYLININTERNATIONAL

11/12/2004 07:46:00 AM