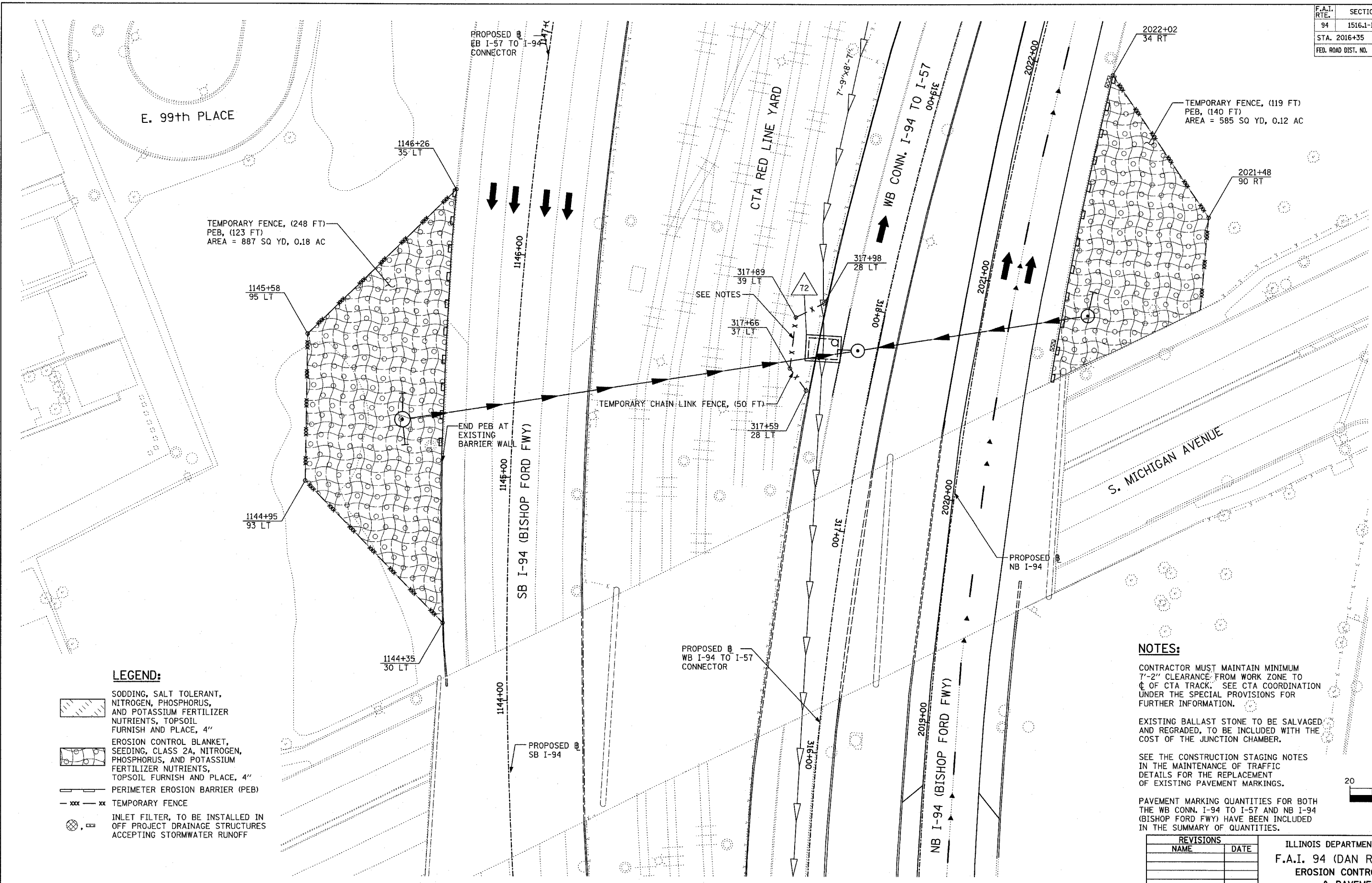


F.A.I. RTE.	SECTION	COUNTY	TOTAL SHEETS	SHEET NO.
94	1516.1-I-1	COOK	195	118
STA. 2016+35		TO STA. 2353+03		
FED. ROAD DIST. NO.	ILLINOIS	FED. AID PROJECT		

62872



**LEGEND:**

- SODDING, SALT TOLERANT, NITROGEN, PHOSPHORUS, AND POTASSIUM FERTILIZER NUTRIENTS, TOPSOIL FURNISH AND PLACE, 4"
- EROSION CONTROL BLANKET, SEEDING, CLASS 2A, NITROGEN, PHOSPHORUS, AND POTASSIUM FERTILIZER NUTRIENTS, TOPSOIL FURNISH AND PLACE, 4"
- PERIMETER EROSION BARRIER (PEB)
- TEMPORARY FENCE
- INLET FILTER, TO BE INSTALLED IN OFF PROJECT DRAINAGE STRUCTURES ACCEPTING STORMWATER RUNOFF

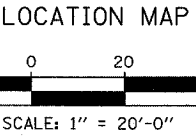
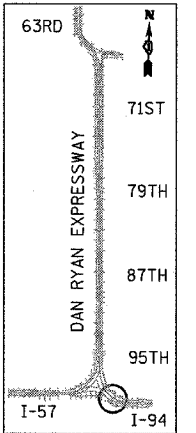
**NOTES:**

CONTRACTOR MUST MAINTAIN MINIMUM 7'-2" CLEARANCE FROM WORK ZONE TO  $\phi$  OF CTA TRACK. SEE CTA COORDINATION UNDER THE SPECIAL PROVISIONS FOR FURTHER INFORMATION.

EXISTING BALLAST STONE TO BE SALVAGED AND REGRADED, TO BE INCLUDED WITH THE COST OF THE JUNCTION CHAMBER.

SEE THE CONSTRUCTION STAGING NOTES IN THE MAINTENANCE OF TRAFFIC DETAILS FOR THE REPLACEMENT OF EXISTING PAVEMENT MARKINGS.

PAVEMENT MARKING QUANTITIES FOR BOTH THE WB CONN. I-94 TO I-57 AND NB I-94 (BISHOP FORD FWY) HAVE BEEN INCLUDED IN THE SUMMARY OF QUANTITIES.



REVISIONS	
NAME	DATE

ILLINOIS DEPARTMENT OF TRANSPORTATION  
**F.A.I. 94 (DAN RYAN EXPRESSWAY)**  
**EROSION CONTROL, LANDSCAPING,**  
**& PAVEMENT MARKING**  
**JUNCTION CHAMBER #72**  
**SHEET 14 OF 14**

SCALE: 1"=20'  
DATE: OCTOBER 4, 2004

DRAWN BY: RTM  
CHECKED BY: MPG

**TYLIN INTERNATIONAL**

11/12/2004 07:46:29 AM