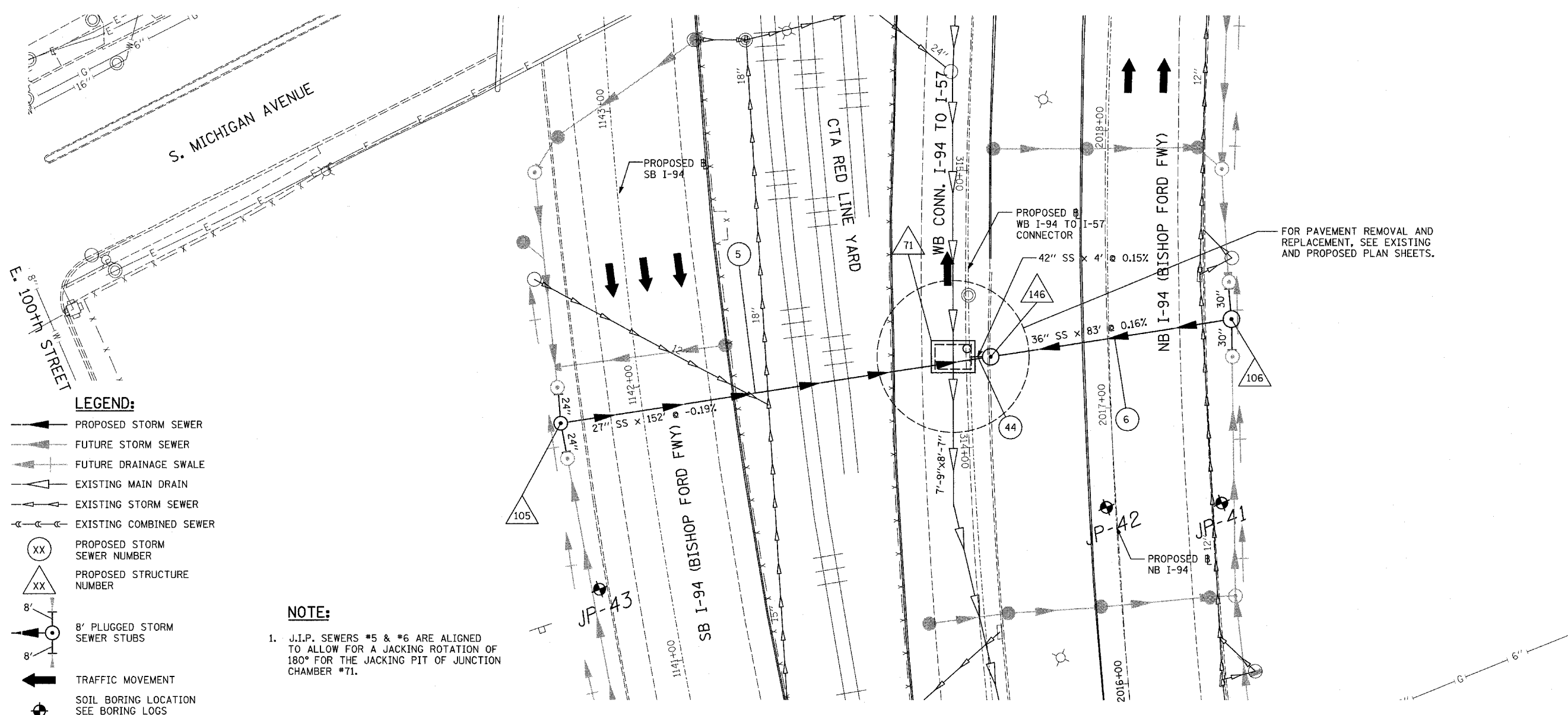


DATE	
BY	
SURVEYED	
ALIGNED	
CHECKED	
NOTE BOOK	
NO.	
DATE	
BY	
SURVEYED	
ALIGNED	
CHECKED	
NOTE BOOK	
NO.	

DATE	
BY	
SURVEYED	
ALIGNED	
CHECKED	
NOTE BOOK	
NO.	
DATE	
BY	
SURVEYED	
ALIGNED	
CHECKED	
NOTE BOOK	
NO.	



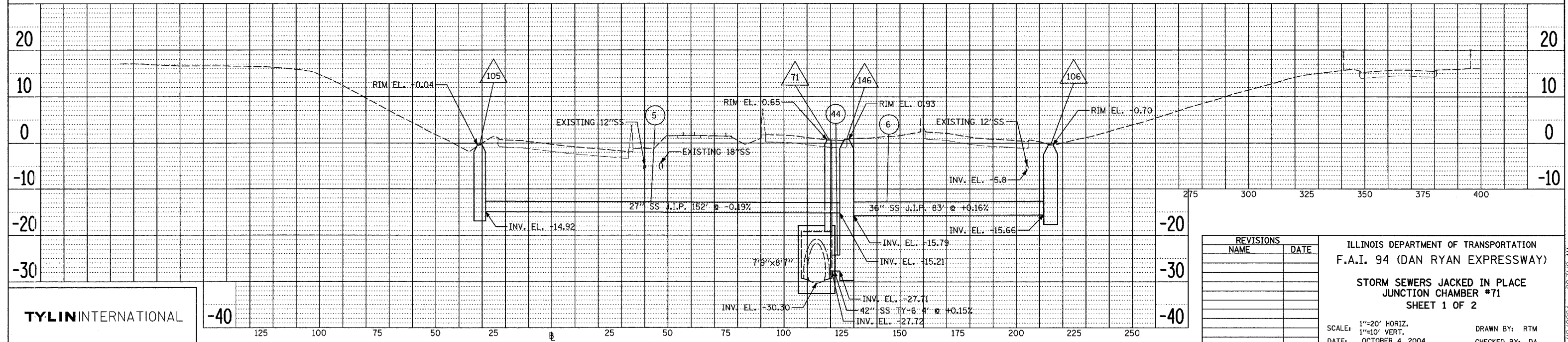
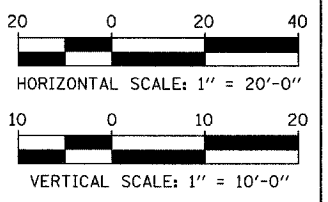
LEGEND:

- ▲ PROPOSED STORM SEWER
- ▬ FUTURE STORM SEWER
- ▬ FUTURE DRAINAGE SWALE
- ▬ EXISTING MAIN DRAIN
- ▬ EXISTING STORM SEWER
- ▬ EXISTING COMBINED SEWER
- ⊙ PROPOSED STORM SEWER NUMBER
- △ PROPOSED STRUCTURE NUMBER
- 8' PLUGGED STORM SEWER STUBS
- ➡ TRAFFIC MOVEMENT
- ⊕ SOIL BORING LOCATION SEE BORING LOGS FOR DESCRIPTION

NOTE:

- J.I.P. SEWERS #5 & #6 ARE ALIGNED TO ALLOW FOR A JACKING ROTATION OF 180° FOR THE JACKING PIT OF JUNCTION CHAMBER #71.

LOCATION MAP



REVISIONS	
NAME	DATE

ILLINOIS DEPARTMENT OF TRANSPORTATION
F.A.I. 94 (DAN RYAN EXPRESSWAY)
STORM SEWERS JACKED IN PLACE
JUNCTION CHAMBER #71
SHEET 1 OF 2

SCALE: 1"=20' HORIZ.
 1"=10' VERT.
 DATE: OCTOBER 4, 2004

DRAWN BY: RTM
 CHECKED BY: DA