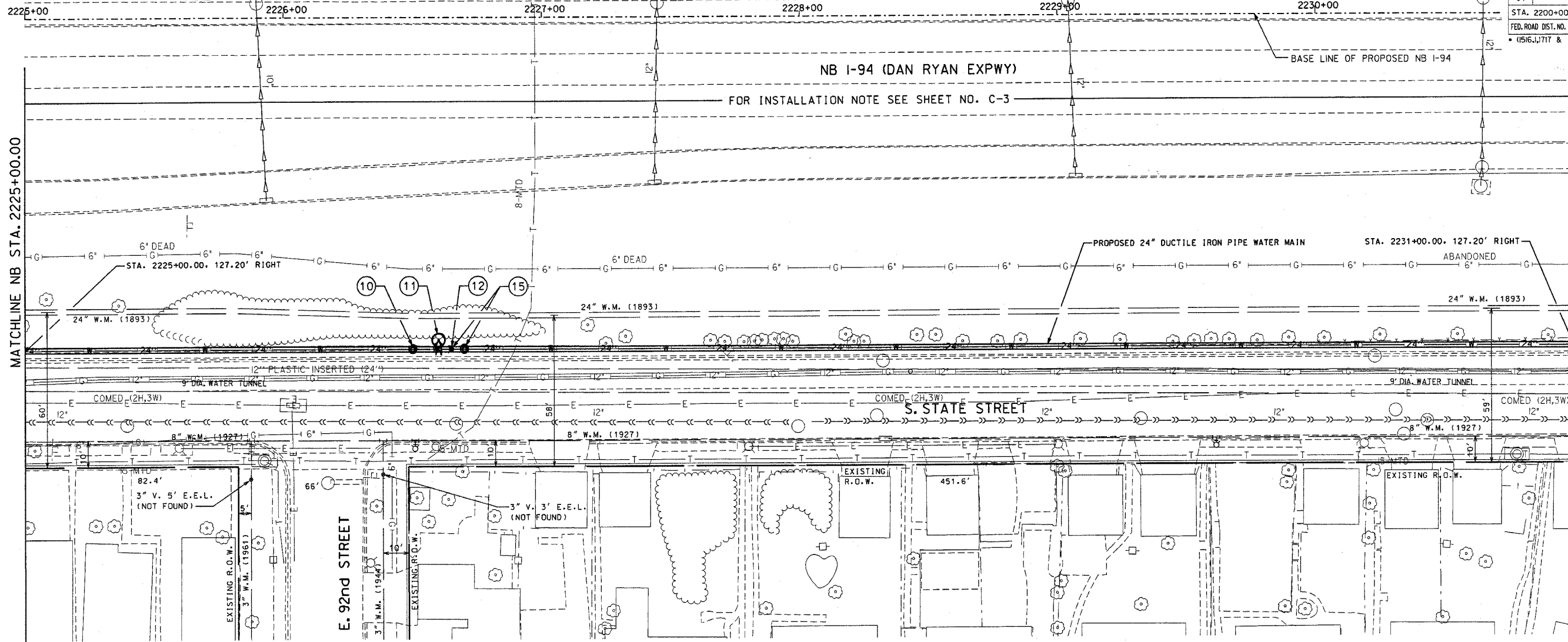
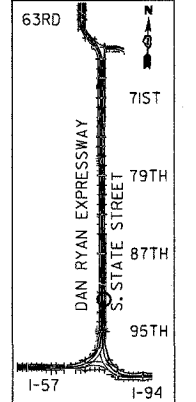
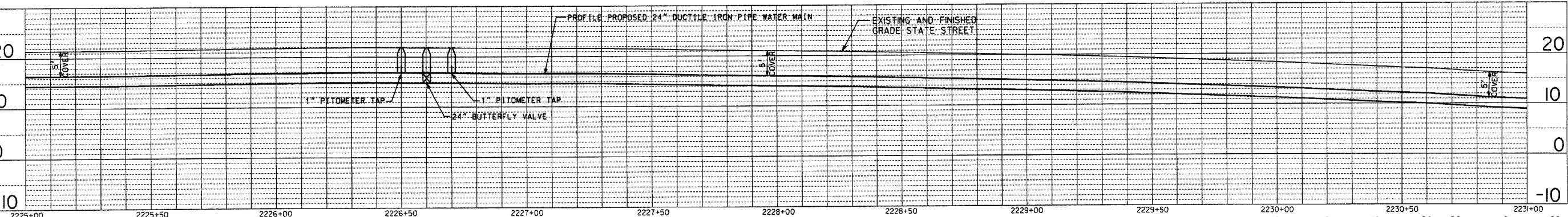


DATE	BY

DATE	BY



MATCHLINE NB STA. 2231+00.00



FOR NOTE 9 SEE SHEET NO. C-5  
 10 WM. BID ITEM NO. 9  
 SET: 1" PITOMETER TAP AT STA. 2226+50.00, 127.20' RIGHT

11 WM. BID ITEM NO. 2c  
 SET: 1-24" BUTTERFLY MJ VALVE AT STA. 2226+60.00, 127.20' RIGHT  
 12 WM. BID ITEM NO. 2b  
 SET: TEMPORARY HYDRANT FOR FLUSHING, PRESSURE TEST AND CHLORINATION

FOR NOTE 13 SEE SHEET NO. C-3  
 FOR NOTE 14 SEE SHEET NO. C-5  
 15 WM. BID ITEM NO. 9  
 AFTER THE NEW 24" WATER MAIN IS TESTED AND APPROVED TO THE SOUTH, CLOSE THE VALVE OF NOTE 11. REMOVE THE TEMPORARY FIRE HYDRANT OF NOTE 12 AND CONTINUE LAYING PIPE NORTH.  
 SET: 1" PITOMETER TAP AT STA. 2226+70.00, 127.20' RIGHT  
 FOR NOTE 16 SEE SHEET NO. C-7

VERTICAL SCALE: 1" = 10'-0"  
 HORIZONTAL SCALE: 1" = 20'-0"

REVISIONS	
NAME	DATE

ILLINOIS DEPARTMENT OF TRANSPORTATION  
 F.A.I. 94 (DAN RYAN EXPRESSWAY)  
 PLAN AND PROFILE  
 24-INCH WATER MAIN RELOCATION  
 S. STATE STREET  
 NB I-94, STA. 2225+00 TO 2231+00  
 SCALE: 1"=20'  
 DATE: SEPTEMBER 3, 2004  
 DRAWN BY:  
 CHECKED BY:

BASE DRAWING SHOWING EXISTING CONDITIONS AND UTILITIES IS PREPARED BY:  
**TYLIN INTERNATIONAL**

C-6