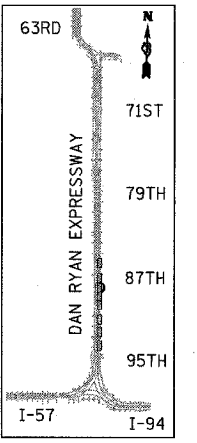
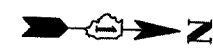
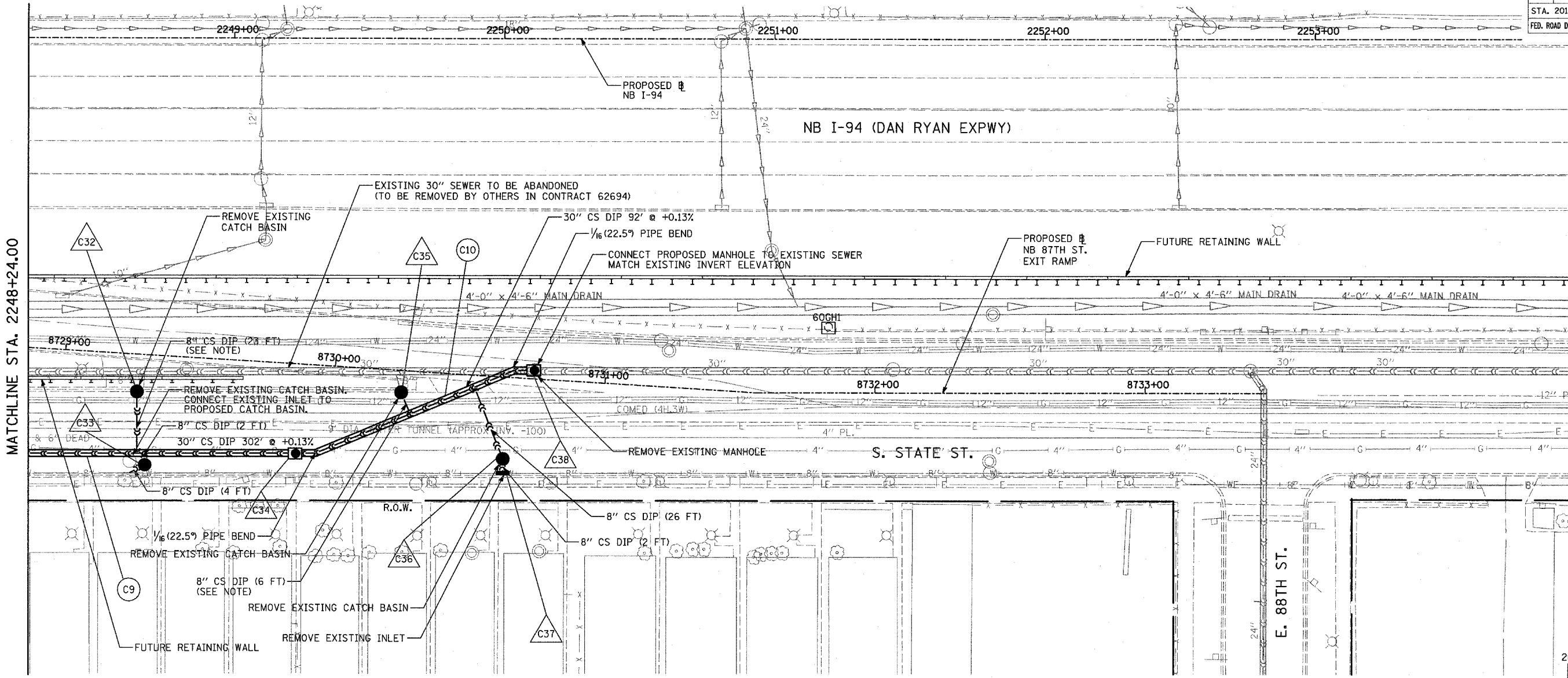


F.A.I. RTE.	SECTION	COUNTY	TOTAL SHEETS	SHEET NO.
94	1516.1-I-1	COOK	195	145
STA. 2016+35		TO STA. 2353+03		
FED. ROAD DIST. NO.		ILLINOIS		FED. AID PROJECT
				62872



LOCATION MAP

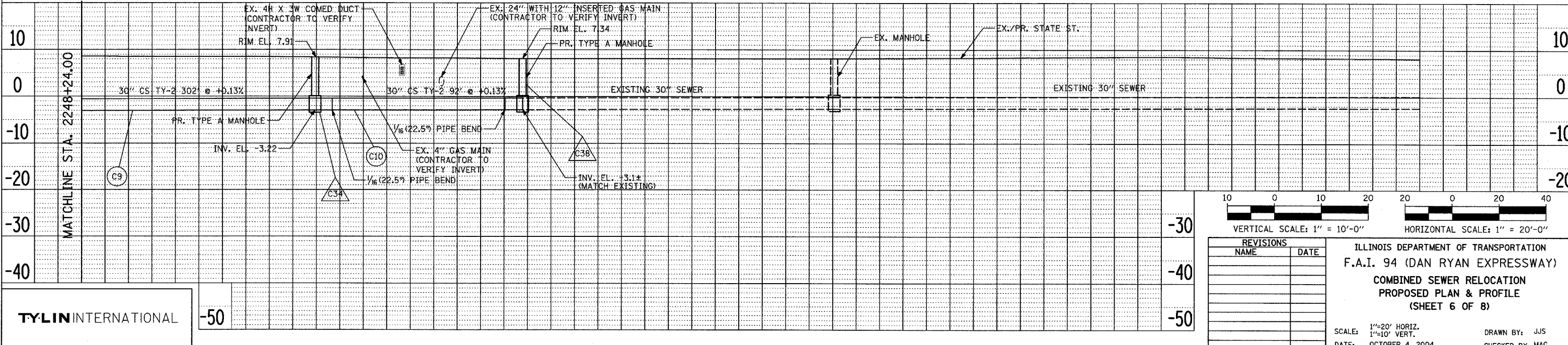


MATCHLINE STA. 2248+24.00

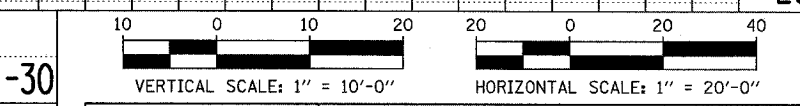
NOTE: SEE CATCH BASIN SPECIAL SHEET FOR DETAIL



SCALE: 1" = 20'-0"



MATCHLINE STA. 2248+24.00



REVISIONS	
NAME	DATE

ILLINOIS DEPARTMENT OF TRANSPORTATION
 F.A.I. 94 (DAN RYAN EXPRESSWAY)
 COMBINED SEWER RELOCATION
 PROPOSED PLAN & PROFILE
 (SHEET 6 OF 8)

SCALE: 1"=20' HORIZ.
 1"=10' VERT.
 DATE: OCTOBER 4, 2004

DRAWN BY: JJS
 CHECKED BY: MAC

DATE	
BY	
REVIEWED	
PLANNED	
NOTED	
NO.	

DATE	
BY	
REVIEWED	
PLANNED	
NOTED	
NO.	

TYLIN INTERNATIONAL

-50

-50