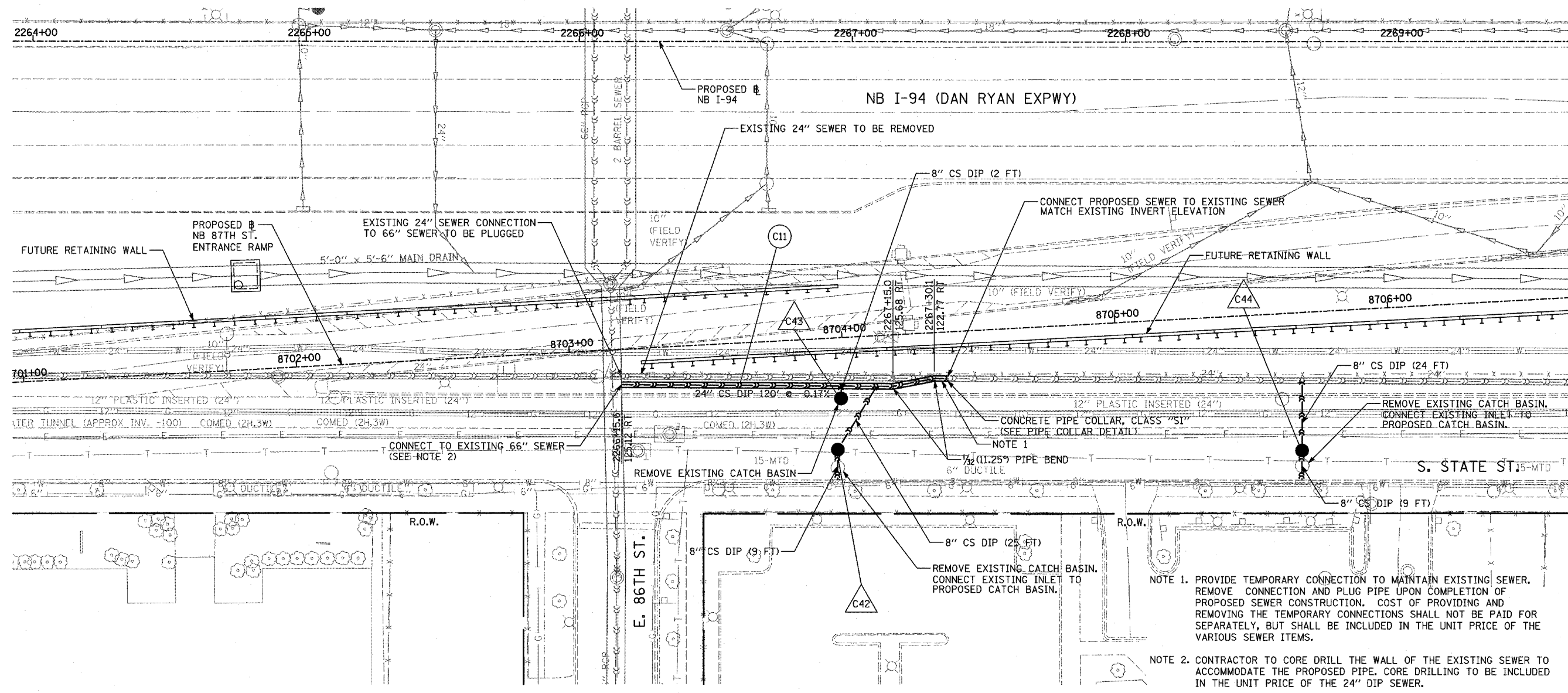
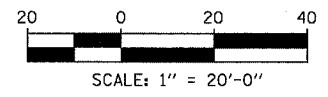


LOCATION MAP

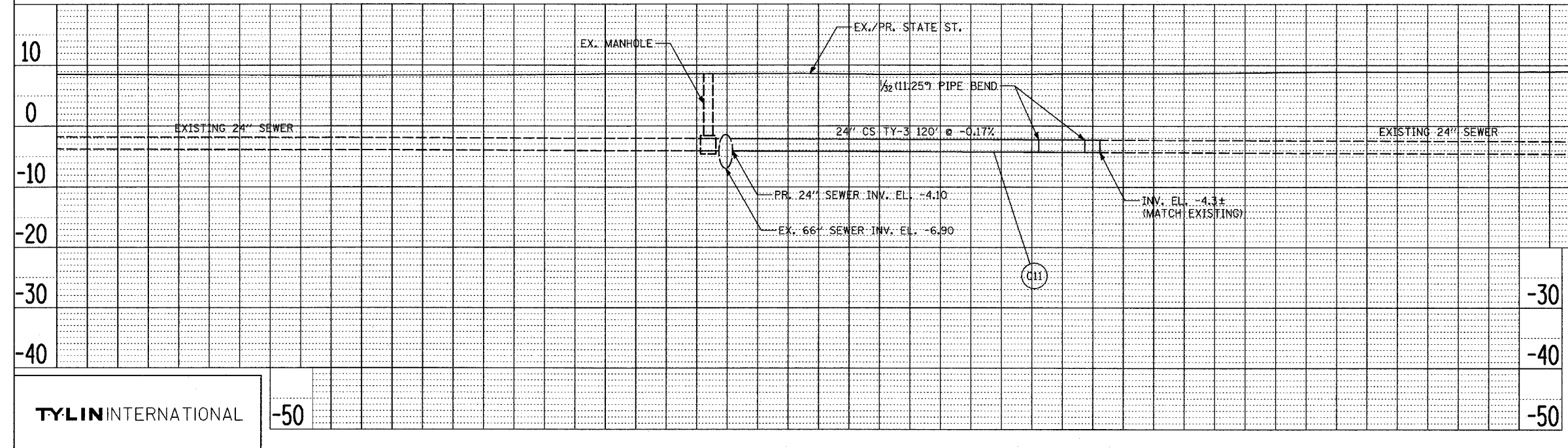


- NOTE 1. PROVIDE TEMPORARY CONNECTION TO MAINTAIN EXISTING SEWER. REMOVE CONNECTION AND PLUG PIPE UPON COMPLETION OF PROPOSED SEWER CONSTRUCTION. COST OF PROVIDING AND REMOVING THE TEMPORARY CONNECTIONS SHALL NOT BE PAID FOR SEPARATELY, BUT SHALL BE INCLUDED IN THE UNIT PRICE OF THE VARIOUS SEWER ITEMS.
- NOTE 2. CONTRACTOR TO CORE DRILL THE WALL OF THE EXISTING SEWER TO ACCOMMODATE THE PROPOSED PIPE. CORE DRILLING TO BE INCLUDED IN THE UNIT PRICE OF THE 24" DIP SEWER.
- NOTE 3. SEWER OFFSETS ARE MEASURED TO ϕ OF PIPE



DATE	
BY	
NO.	
PLAN	
NO.	
NO.	
NO.	
NO.	
NO.	
NO.	

DATE	
BY	
NO.	
PROFILE	
NO.	
NO.	
NO.	
NO.	
NO.	
NO.	



10 0 10 20		20 0 20 40	
VERTICAL SCALE: 1" = 10'-0"		HORIZONTAL SCALE: 1" = 20'-0"	
REVISIONS		ILLINOIS DEPARTMENT OF TRANSPORTATION	
NAME	DATE	F.A.I. 94 (DAN RYAN EXPRESSWAY)	
		COMBINED SEWER RELOCATION	
		PROPOSED PLAN & PROFILE	
		(SHEET 8 OF 8)	
		SCALE: 1"=20' HORIZ.	DRAWN BY: JJS
		1"=10' VERT.	CHECKED BY: MAG
		DATE: OCTOBER 4, 2004	

TYLIN INTERNATIONAL

-50

-50