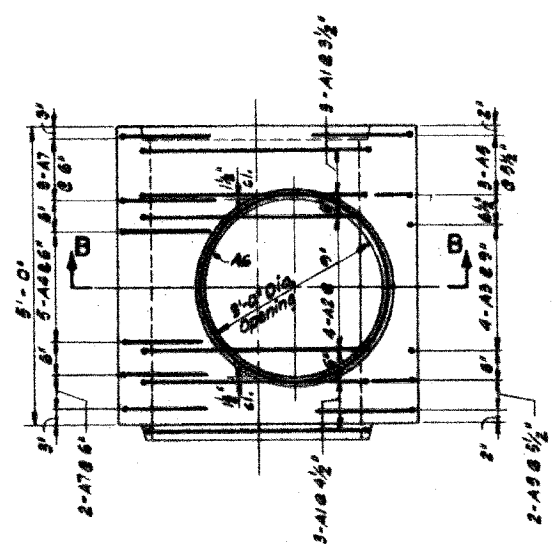
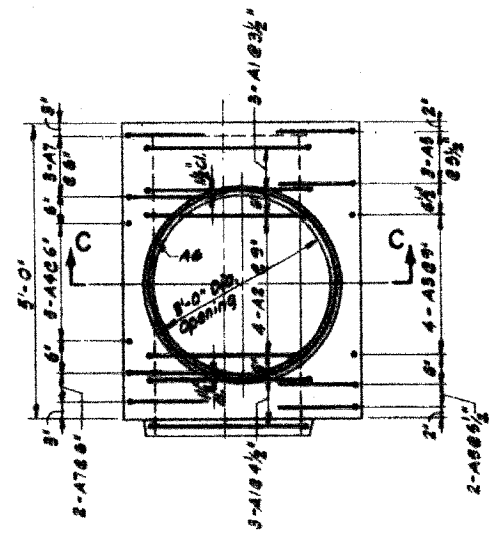


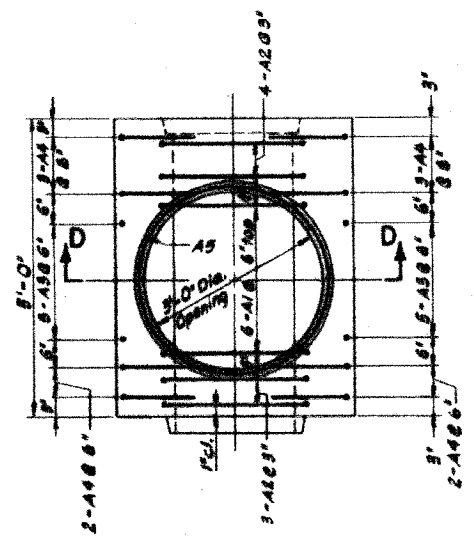
PLAN



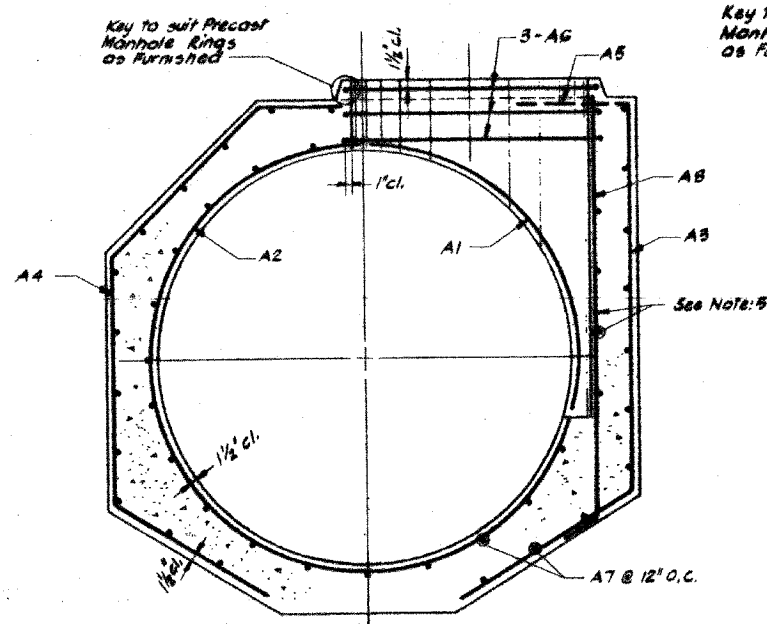
PLAN



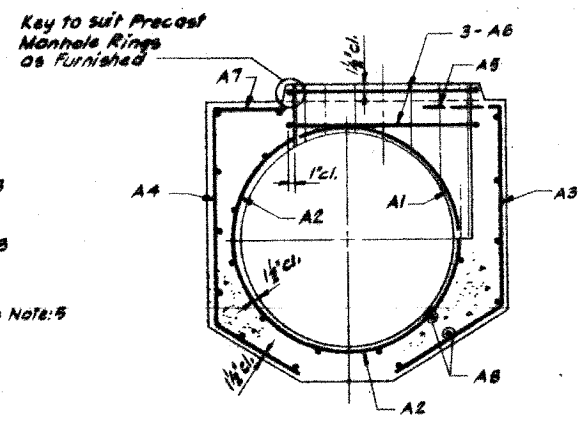
PLAN



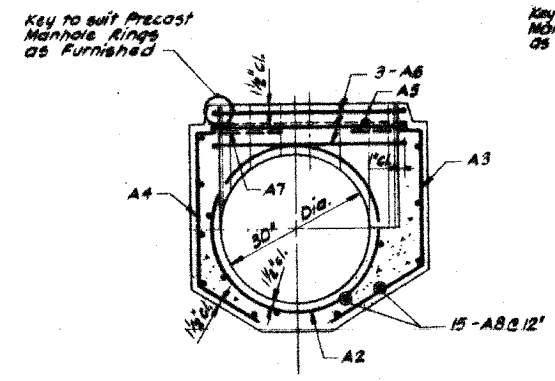
PLAN



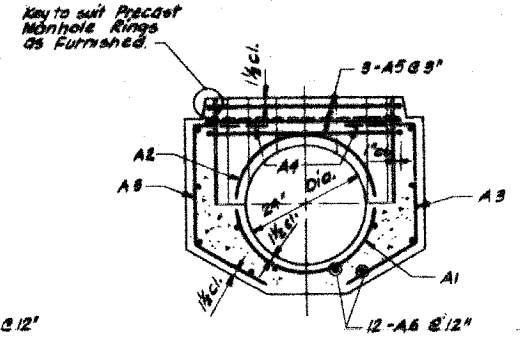
SECTION A-A
MANHOLE BASE FOR SEWERS
48" DIA. TO 120" DIA. INCLUSIVE



SECTION B-B
MANHOLE BASE FOR SEWERS
36" DIA. AND 42" DIA.



SECTION C-C
MANHOLE BASE
FOR 30" DIA. SEWERS



SECTION D-D
MANHOLE BASE
FOR 24" DIA. SEWERS

- NOTE:
1. For Additional Details of Manholes See Sheet No. ...
 2. For Structural Notes See Sheet No. ...
 3. For Bar List See Sheet No. ...
 4. For Manhole Bases Required For This Contract See Sheet No. ...
 5. The Layers of Reinforcement For 66" Dia. Manhole and over.

DATE	DESCRIPTION
9/26/04	PRELIMINARY PLAN
	APPROVED PLAN

CITY OF CHICAGO
DEPARTMENT OF WATER MANAGEMENT
BUREAU OF ENGINEERING SERVICES

**REINFORCEMENT FOR TYPE "A"
PRECAST MANHOLE BASES**

SCALE: 3/8" = 1'-0"

CONTRACT
SHEET NO.

DRAWN BY B. Merkowski
DESIGNED BY N.S.
CHECKED BY A.A.

NOTE: THESE DRAWINGS ARE FOR INFORMATIONAL PURPOSES ONLY. ALL REFERENCES TO PAY ITEMS OR PAY LIMITS SHOULD BE IGNORED. SEE SPECIAL PROVISIONS FOR PAY ITEMS.

TYLIN INTERNATIONAL

REVISIONS	
NAME	DATE

ILLINOIS DEPARTMENT OF TRANSPORTATION
F.A.I. 94 (DAN RYAN EXPRESSWAY)
CITY OF CHICAGO
DEPARTMENT OF WATER MANAGEMENT
SEWER RELOCATION DETAIL
(SHEET 4 OF 9)

SCALE: NONE
DATE: OCTOBER 4, 2004
DRAWN BY: MB
CHECKED BY: MPG