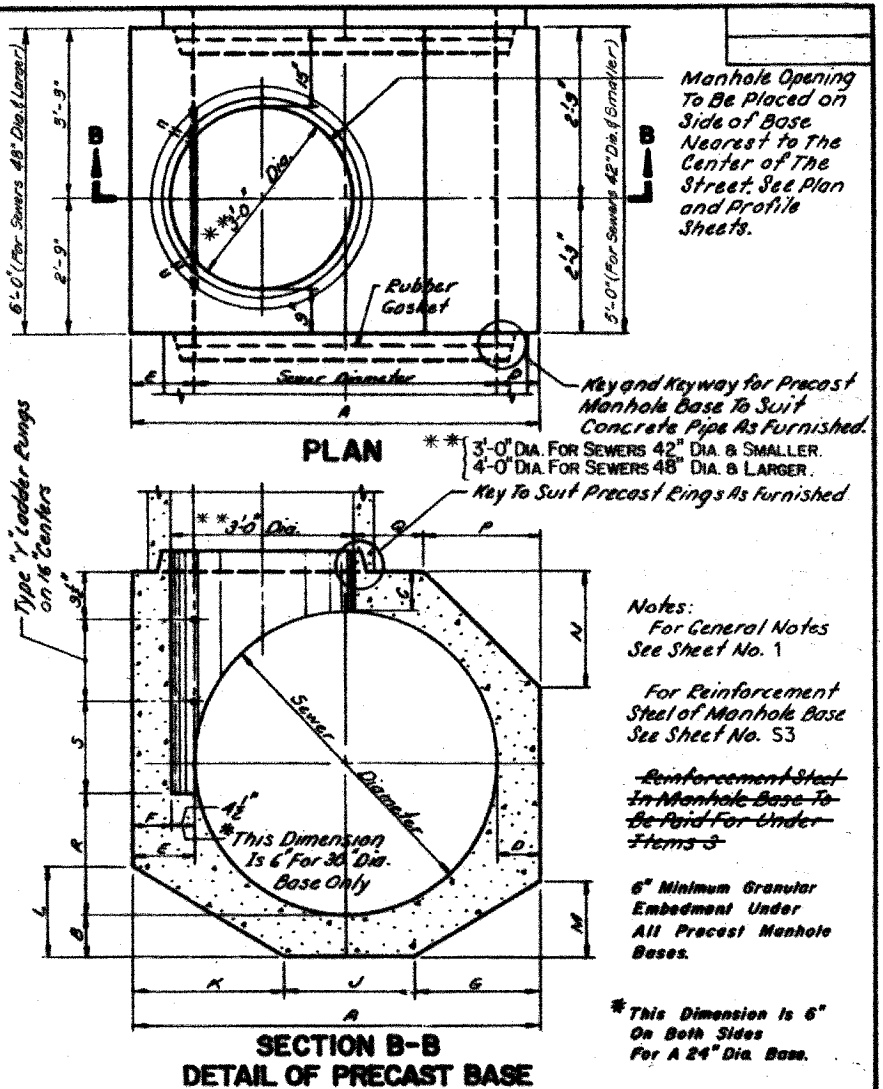
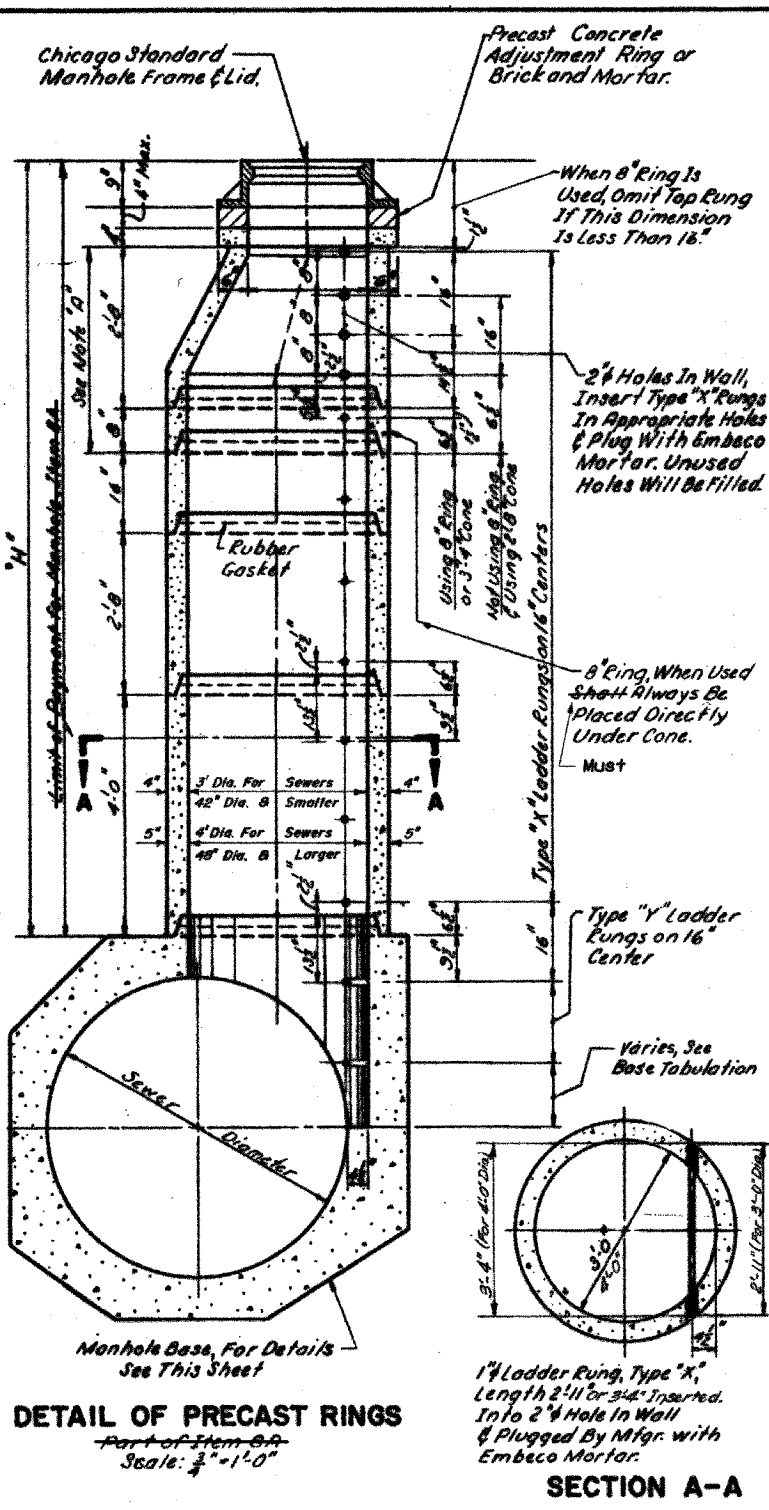


NUMBER OF PRECAST RINGS REQUIRED FOR MANHOLES OF VARIOUS HEIGHTS

TOTAL HEIGHT "H"	FRAME + 2" COLLAR			PRECAST RINGS			BRICK AND/OR MORTAR		
	3'-0"	4'-0"	5'-0"	4'-0"	5'-0"	6'-0"	4'-0"	5'-0"	6'-0"
3'-0"	1	1	1	1	1	1	1	1	1
4'-0"	1	1	1	1	1	1	1	1	1
5'-0"	1	1	1	1	1	1	1	1	1
6'-0"	1	1	1	1	1	1	1	1	1
7'-0"	1	1	1	1	1	1	1	1	1
8'-0"	1	1	1	1	1	1	1	1	1
9'-0"	1	1	1	1	1	1	1	1	1
10'-0"	1	1	1	1	1	1	1	1	1
11'-0"	1	1	1	1	1	1	1	1	1
12'-0"	1	1	1	1	1	1	1	1	1
13'-0"	1	1	1	1	1	1	1	1	1
14'-0"	1	1	1	1	1	1	1	1	1
15'-0"	1	1	1	1	1	1	1	1	1
16'-0"	1	1	1	1	1	1	1	1	1
17'-0"	1	1	1	1	1	1	1	1	1
18'-0"	1	1	1	1	1	1	1	1	1
19'-0"	1	1	1	1	1	1	1	1	1
20'-0"	1	1	1	1	1	1	1	1	1
21'-0"	1	1	1	1	1	1	1	1	1
22'-0"	1	1	1	1	1	1	1	1	1
23'-0"	1	1	1	1	1	1	1	1	1
24'-0"	1	1	1	1	1	1	1	1	1
25'-0"	1	1	1	1	1	1	1	1	1
26'-0"	1	1	1	1	1	1	1	1	1
27'-0"	1	1	1	1	1	1	1	1	1
28'-0"	1	1	1	1	1	1	1	1	1
29'-0"	1	1	1	1	1	1	1	1	1
30'-0"	1	1	1	1	1	1	1	1	1



SEWER DIA.	PART OF ITEM	DIMENSIONS OF PRECAST MANHOLE BASE																NO. "Y" RUNGS			
		A	B	C	D	E	F	G	H	J	K	L	M	N	P	Q	R		S		
120"	3A	2'-4"	12"	12"	12"	12"	12"	12"	12"	4'-0"	4'-0"	4'-0"	4'-0"	2'-7"	2'-8"	5'-6"	5'-6"	5'-10"	2'-0"	18 1/2	6
108"	3A	11'-4"	12"	12"	12"	12"	12"	12"	12"	3'-6"	3'-6"	3'-6"	3'-6"	2'-4"	2'-4"	5'-2"	5'-2"	5'-2"	2'-0"	16 1/2	6
102"	3A	10'-4"	12"	12"	12"	12"	12"	12"	12"	3'-0"	3'-0"	3'-0"	3'-0"	2'-0"	2'-0"	5'-0"	5'-0"	5'-0"	2'-0"	16 1/2	6
96"	3A	10'-2"	11"	11"	11"	11"	11"	11"	11"	3'-3"	3'-3"	3'-3"	3'-3"	2'-3"	2'-3"	2'-10"	2'-10"	2'-5"	2'-0"	9 1/2	5
90"	3A	9'-8"	11"	11"	11"	11"	11"	11"	11"	3'-1"	3'-1"	3'-1"	3'-1"	2'-2"	2'-2"	2'-9"	2'-9"	2'-0"	2'-0"	19 1/2	4
84"	3A	9'-0"	10"	10"	10"	10"	10"	10"	10"	2'-11"	2'-11"	2'-11"	2'-11"	2'-1"	2'-1"	2'-5"	2'-5"	1'-9"	2'-0"	12 1/2	4
78"	3A	8'-6"	10"	10"	10"	10"	10"	10"	10"	2'-9"	2'-9"	2'-9"	2'-9"	2'-4"	2'-4"	1'-4"	1'-4"	1'-4"	2'-0"	6 1/2	4
72"	3A	7'-8"	9"	9"	9"	9"	9"	9"	9"	2'-6"	2'-6"	2'-6"	2'-6"	2'-1"	2'-1"	2'-1"	2'-1"	1'-7"	2'-0"	15 1/2	3
66"	3B	7'-4"	8"	8"	8"	8"	8"	8"	8"	2'-4"	2'-4"	2'-4"	2'-4"	1'-9"	1'-9"	1'-9"	1'-9"	1'-9"	2'-0"	9 1/2	3
60"	3B	6'-8"	8"	8"	8"	8"	8"	8"	8"	2'-1"	2'-1"	2'-1"	2'-1"	1'-6"	1'-6"	1'-6"	1'-6"	1'-6"	2'-0"	18 1/2	2
54"	3B	6'-2"	8"	8"	8"	8"	8"	8"	8"	2'-3"	2'-3"	2'-3"	2'-3"	1'-7"	1'-7"	1'-7"	1'-7"	1'-7"	2'-0"	12 1/2	2
48"	3B	5'-6"	7"	7"	7"	7"	7"	7"	7"	2-0"	2-0"	2-0"	2-0"	1'-5"	1'-5"	1'-5"	1'-5"	1'-5"	2'-0"	21 1/2	1
42"	3B	5'-0"	7"	7"	7"	7"	7"	7"	7"	1'-8"	1'-8"	1'-8"	1'-8"	1'-1"	1'-1"	1'-1"	1'-1"	1'-1"	2'-0"	18 1/2	1
36"	3B	4'-6"	6"	6"	6"	6"	6"	6"	6"	1'-6"	1'-6"	1'-6"	1'-6"	1'-2"	1'-2"	1'-2"	1'-2"	1'-2"	2'-0"	14 1/2	1
30"	3B	4'-0"	6"	6"	6"	6"	6"	6"	6"	1'-4"	1'-4"	1'-4"	1'-4"	1'-2"	1'-2"	1'-2"	1'-2"	1'-2"	2'-0"	11 1/2	1
24"	3B	4'-0"	6"	6"	6"	6"	6"	6"	6"	1'-6"	1'-6"	1'-6"	1'-6"	1'-2"	1'-2"	1'-2"	1'-2"	1'-2"	2'-0"	8 1/2	1

DRAWN BY REPRODUCTION
CHECKED BY N.S.
EXAMINED BY A.A.

NOTES:
Precast Concrete Rings Must Conform To A.S.T.M. Designation C76 For "Reinforced Concrete Culvert, Storm Drain, and Sewer Pipe, Class B, Wall B. Standard Lengths of Rings Are: 4'-0", 2'-8", 1'-4", 0'-8" and 0'-4" Collar.
All Reinforcement Steel Required for Precast Concrete Rings Must Be Included in The Price Bid for Item 8-A.
For Revisions To Item 8 Manholes See Specifications, Part 1, S.P.

Note "A"
Where The 8" Ring Is Indicated In The Tabulation, A Separate One Piece Cone 3/4" In Height May Be Used As An Alternate.

Scale of Drawing
1" = 1'-0"

REVISIONS	
DATE	DESCRIPTION
8-20-04	Revised to Suit 48" Dia. Rings. A
8/25/04	PRELIMINARY PLAN
	APPROVED PLAN

CITY OF CHICAGO
DEPARTMENT OF WATER MANAGEMENT
BUREAU OF ENGINEERING SERVICES

TYPE "A" MANHOLE PRECAST BASES AND RINGS

SCALE: AS SHOWN

NOTE: THESE DRAWINGS ARE FOR INFORMATIONAL PURPOSES ONLY. ALL REFERENCES TO PAY ITEMS OR PAY LIMITS SHOULD BE IGNORED. SEE SPECIAL PROVISIONS FOR PAY ITEMS.

REVISIONS	
NAME	DATE

ILLINOIS DEPARTMENT OF TRANSPORTATION
F.A.I. 94 (DAN RYAN EXPRESSWAY)

CITY OF CHICAGO
DEPARTMENT OF WATER MANAGEMENT
SEWER RELOCATION DETAIL
(SHEET 6 OF 9)

SCALE: NONE
DATE: OCTOBER 4, 2004

DRAWN BY: MB
CHECKED BY: MPG