

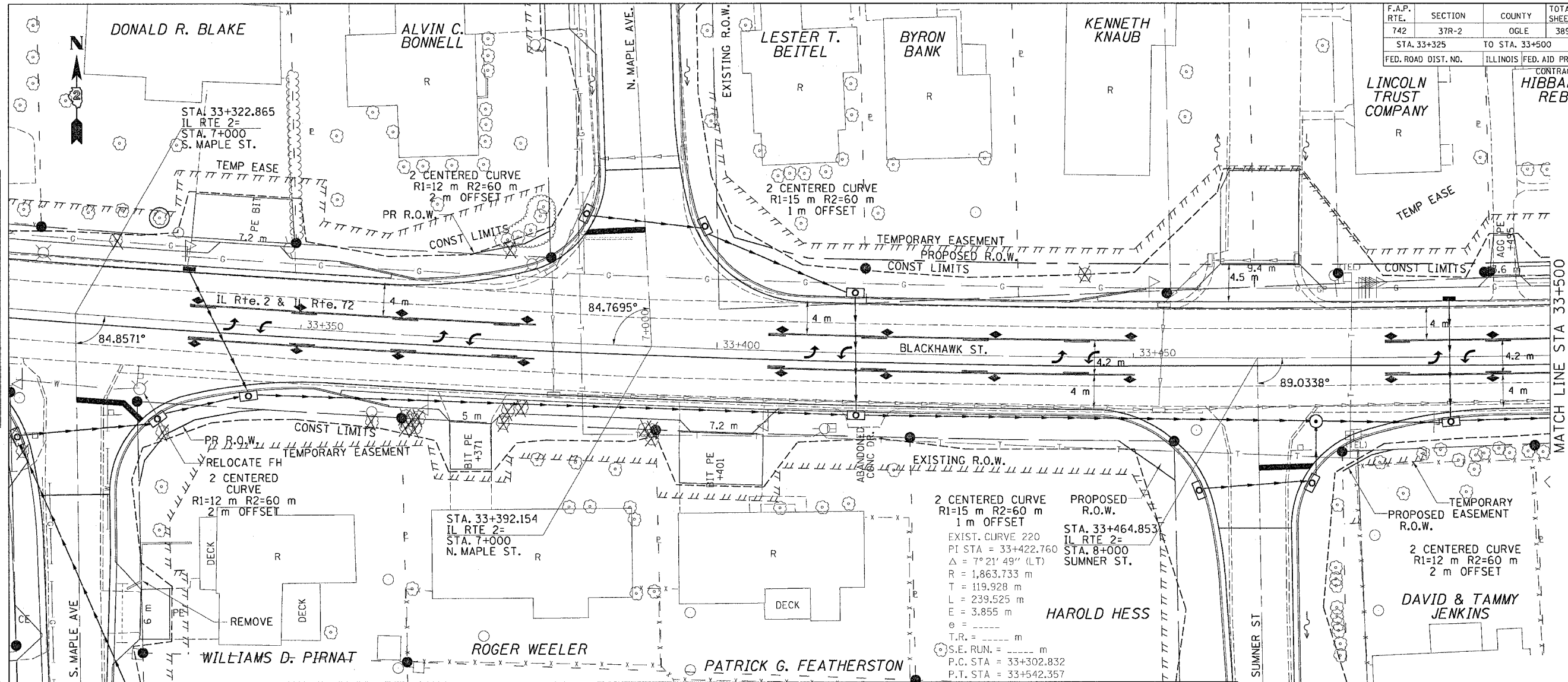
F.A.P. RTE.	SECTION	COUNTY	TOTAL SHEETS	SHEET NO.
742	37R-2	OGLE	389	54
STA. 33+325		TO STA. 33+500		
FED. ROAD DIST. NO.		ILLINOIS	FED. AID PROJECT	
		CONTRACT #64157		
		HIBBARD C. REBER		

BY	DATE

FINAL SURVEYED  
SURVEY PLOTTED  
NOTE BOOK TEMPLATE  
AREAS CHECKED

BY	DATE

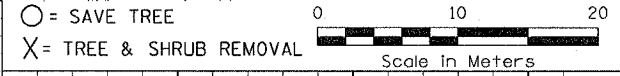
ORIGINAL SURVEYED  
SURVEY PLOTTED  
NOTE BOOK TEMPLATE  
AREAS CHECKED



**2 CENTERED CURVE**  
R1=15 m R2=60 m  
1 m OFFSET

**PROPOSED R.O.W.**  
STA. 33+464.853  
IL RTE 2= STA. 8+000  
SUMMER ST.

EXIST. CURVE 220  
PI STA = 33+422.760  
 $\Delta = 7^{\circ}21'49''$  (LT)  
R = 1,863.733 m  
T = 119.928 m  
L = 239.525 m  
E = 3.855 m  
e = \_\_\_\_\_ m  
T.R. = \_\_\_\_\_ m  
S.E. RUN. = \_\_\_\_\_ m  
P.C. STA = 33+302.832  
P.T. STA = 33+542.357



222.5																				222.5
220																				220
217.5																				217.5

IL Rte. 2 & IL Rte. 72

Thu Sep 22 11:26:07 2011  
c:\projects\m208096\plm1.dgn