

F.A.P. RTE.	SECTION	COUNTY	TOTAL SHEETS	SHEET NO.
301	23 BR-2	JO DAVIESS	30	1

STATE OF ILLINOIS
DEPARTMENT OF TRANSPORTATION

DIVISION OF HIGHWAYS

**PROPOSED
HIGHWAY PLANS**

FAP ROUTE 301 (US 20)
SECTION 23 BR-2
PROJECT BRF-0301(030)
JO DAVIESS COUNTY
C-92-126-03

INDEX OF SHEETS

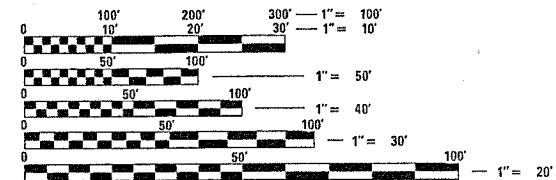
- 1 COVER SHEET AND INDEX OF SHEETS
- 2 SUMMARY OF QUANTITIES
- 3 SCHEDULE OF QUANTITIES
- 4 GENERAL NOTES
- 5 TYPICAL CROSS-SECTIONS
- 6 TRAFFIC MAINTENANCE
- 7-8 PLAN AND PROFILE
- 9-16 CULVERT PLANS
- 17-20 EXISTING BRIDGE PLANS (4 SHEETS)
- 21 DETAIL OF BITUMINOUS SHOULDER AT GUARDRAIL (DIST STD 23.4)
BITUMINOUS SHOULDERS (DIST STD 23.4c)
PORTLAND CEMENT CONCRETE BASE COURSE DETAIL (DIST STD 24.4)
WITNESS MARKER FOR PERMANENT SURVEY MARKERS TYPE II (DIST STD 38.4)
- 22 STOP LINE SIGN FOR TEMPORARY SIGNALS (DIST STD 99.4)
- 23 EROSION CONTROL DETAILS FOR SILT FENCE (DIST STD 29.2)
- 24 STORM WATER POLLUTION PREVENTION PLAN EROSION CONTROL PLAN (DIST STD 2.1)
- 25 ENTRANCE AND SIDEROADS WITH 2.4 m (8') BITUMINOUS SHOULDERS (DIST STD 22.1)
- 26-30 CROSS-SECTIONS

PROJECT ENGINEER
ROBERT WAGNER (815) 284-5358

THE SCHEMMER ASSOCIATES
(402) 493-4800

STANDARDS

- 000001-04 STANDARD SYMBOLS, ABBREVIATIONS, AND PATTERNS
- 001001 AREAS OF REINFORCEMENT REBARS
- 001006 DECIMAL OF AN INCH AND A FOOT
- 280001-02 TEMPORARY EROSION CONTROL SYSTEMS
- 353001-01 P.C.C. BASE COURSE WITH BITUMINOUS CONCRETE BINDER AND SURFACE COURSES
- 420701-01 PAVEMENT FABRIC
- 442101-05 CLASS B PATCHES
- 630001-05 STEEL PLATE BEAM GUARDRAIL
- 630101-05 GUARDRAIL MOUNTED ON EXISTING CULVERTS
- 630201-03 PCC/BITUMINOUS STABILIZATION AT STEEL PLATE BEAM GUARDRAIL
- 630301-03 SHOULDER WIDENING FOR TYPE 1 GUARDRAIL TERMINALS
- 635006-02 REFLECTOR AND TERMINAL MARKER PLACEMENT
- 635011-01 REFLECTOR MARKER AND MOUNTING DETAILS
- 666001 RIGHT OF WAY MARKERS
- 667101 PERMANENT SURVEY MARKERS
- 701006-02 TYPICAL APPLICATION OF TRAFFIC CONTROL DEVICES
- 701011-01 TYPICAL APPLICATION OF TRAFFIC CONTROL DEVICES
- 701201-02 TYPICAL APPLICATION OF TRAFFIC CONTROL DEVICES
- 701301-02 TYPICAL APPLICATION OF TRAFFIC CONTROL DEVICES
- 701306-01 TYPICAL APPLICATION OF TRAFFIC CONTROL DEVICES
- 701311-02 TYPICAL APPLICATION OF TRAFFIC CONTROL DEVICES
- 701321-08 TYPICAL APPLICATION OF TRAFFIC CONTROL DEVICES
- 701326-02 TYPICAL APPLICATION OF TRAFFIC CONTROL DEVICES
- 702001-05 TRAFFIC CONTROL DEVICES
- 704001-02 TEMPORARY CONCRETE BARRIER
- 780001-01 TYPICAL PAVEMENT MARKINGS
- 886001 DETECTOR LOOP INSTALLATIONS
- 886006 TYPICAL LAYOUT FOR DETECTOR LOOPS

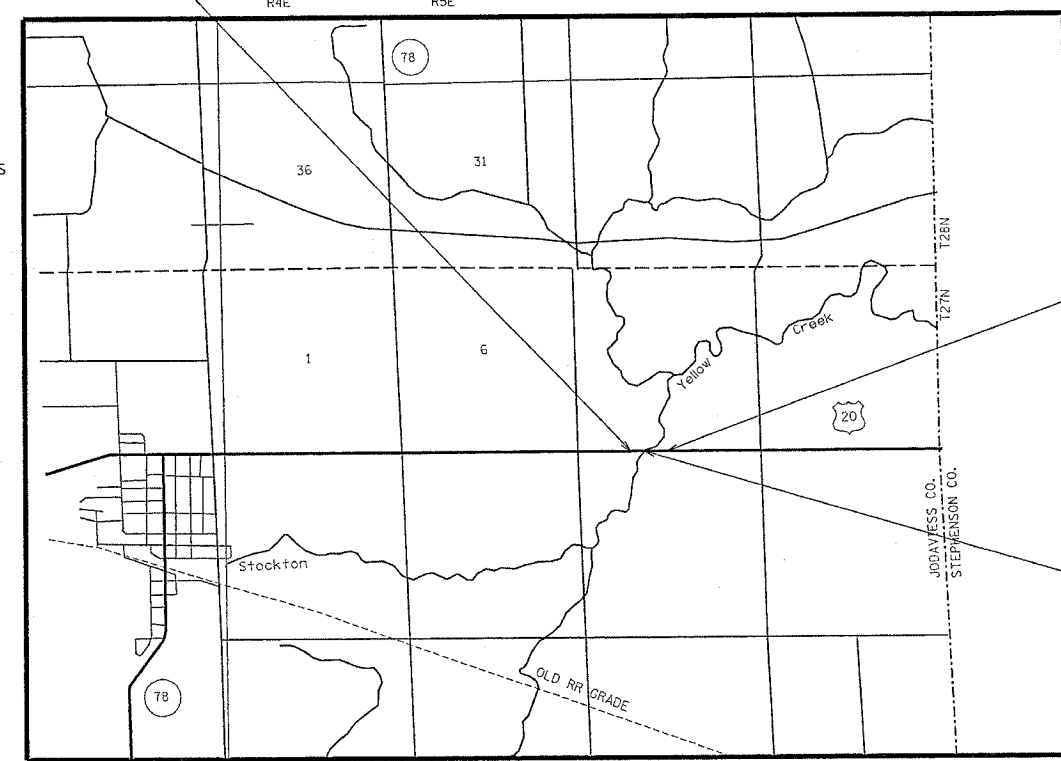


FULL SIZE PLANS HAVE BEEN PREPARED USING STANDARD ENGINEERING SCALES. REDUCED SIZED PLANS WILL NOT CONFORM TO STANDARD SCALES. IN MAKING MEASUREMENTS ON REDUCED PLANS, THE ABOVE SCALES MAY BE USED.

J.U.L.I.E.
JOINT UTILITY LOCATION INFORMATION FOR EXCAVATION
1-800-892-0123

CONTRACT NO. 64412

PROJECT BEGINS
STA. 120+85.34



ADT: 5800 VPD 16% TRUCKS
WARDS GROVE TOWNSHIP, SECTIONS 5 & 8

NET LENGTH OF PROJECT = 414.66 FEET .079 MILES
GROSS LENGTH OF PROJECT = 414.66 FEET .079 MILES



PROJECT ENDS
STA. 125+00.00

SECTION 23 BR-2
INCLUDES THE REMOVAL OF THE EXISTING STRUCTURE NO. 043-0014 AND CONSTRUCTION OF THE NEW STRUCTURE NO. 043-2006, TRIPLE 10' X 7' REINFORCED CONCRETE BOX CULVERT AT STA. 123+36.00



Stephen D. Kothel
SIGNATURE
11/5/2004
DATE
EXPIRES: 11-30-2004



Douglas G. Holle
SIGNATURE
1/10/04
DATE
EXPIRES: 11-30-2005



STATE OF ILLINOIS
DEPARTMENT OF TRANSPORTATION
DIVISION OF HIGHWAYS

SUBMITTED Oct 26 20 04
Gregory L. Mount
DISTRICT ENGINEER

December 10 20 04
Mike Hine
ENGINEER OF DESIGN AND ENVIRONMENT

December 10 20 04
Victor Maden
DIRECTOR, DIVISION OF HIGHWAYS

DISTRICT 2
DIXON, IL

PLANS PREPARED BY:

THE SCHEMMER ASSOCIATES
1044 N. 115TH STREET, SUITE 300
OMAHA, NE 68154-4436

PRINTED BY THE AUTHORITY
OF THE STATE OF ILLINOIS