

USGS DATUM: NGVD-1929

KAY SPIDAHL

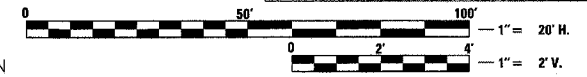
BENCH MARK

USGS BRASS CAP IN CONCRETE, STAMPED "ELEV. = 936' ". NEAR NORTH R.O.W. OF HOWARD-SVILLE RD. 100'± EAST OF THE CENTERLINE OF TIGER WHIP ROAD. ELEV. = 936.544'

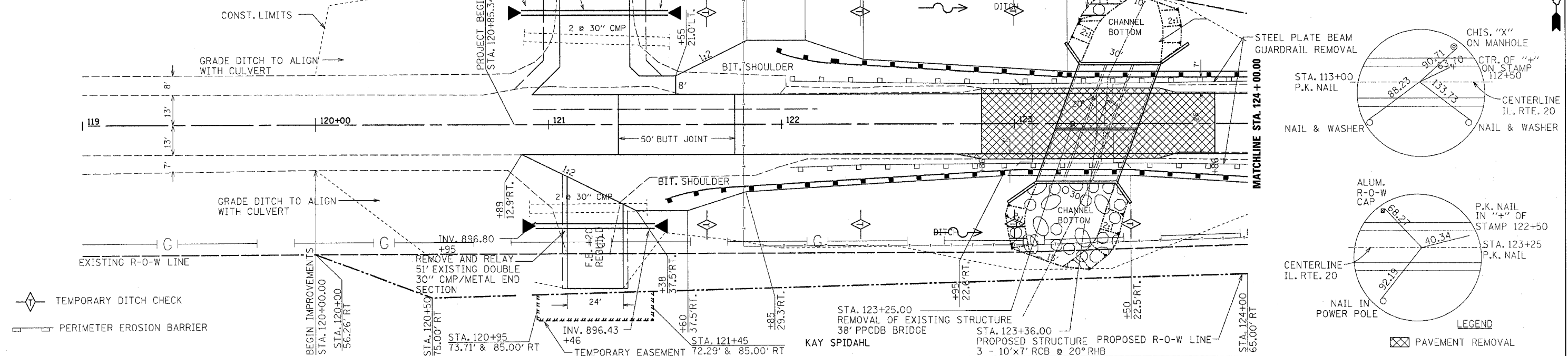
HIGHLAND CHEMICAL

CONTRACT NO. 64412

F.A.P. RTE.	SECTION	COUNTY	TOTAL SHEETS	SHEET NO.
301	23 BR-2	JO DAVIESS	30	7
STA. 119+00.00 TO STA. 124+00.00				
FED. ROAD DIST. NO.			ILLINOIS FED. AID PROJECT	



PLAN	DATE	BY
DESIGNED		
CHECKED		
APPROVED		
DATE		



PROFILE	DATE	BY
DESIGNED		
CHECKED		
APPROVED		
DATE		

