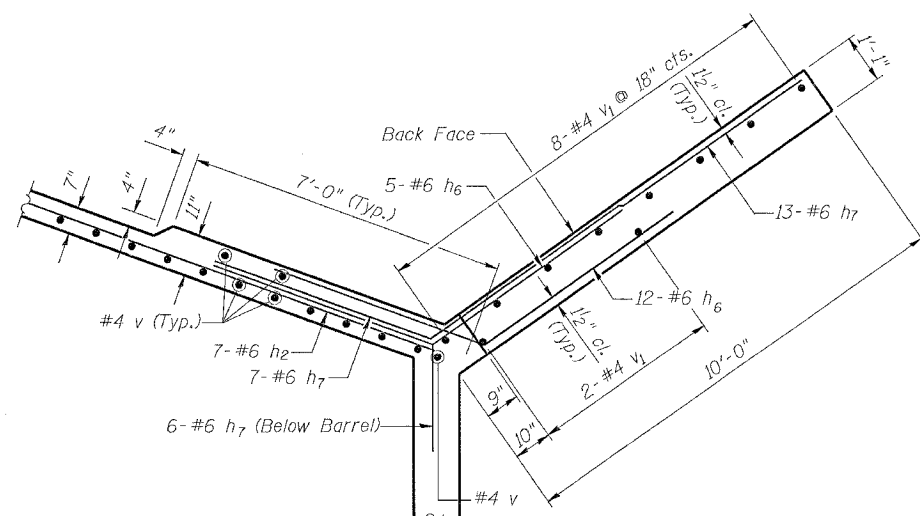
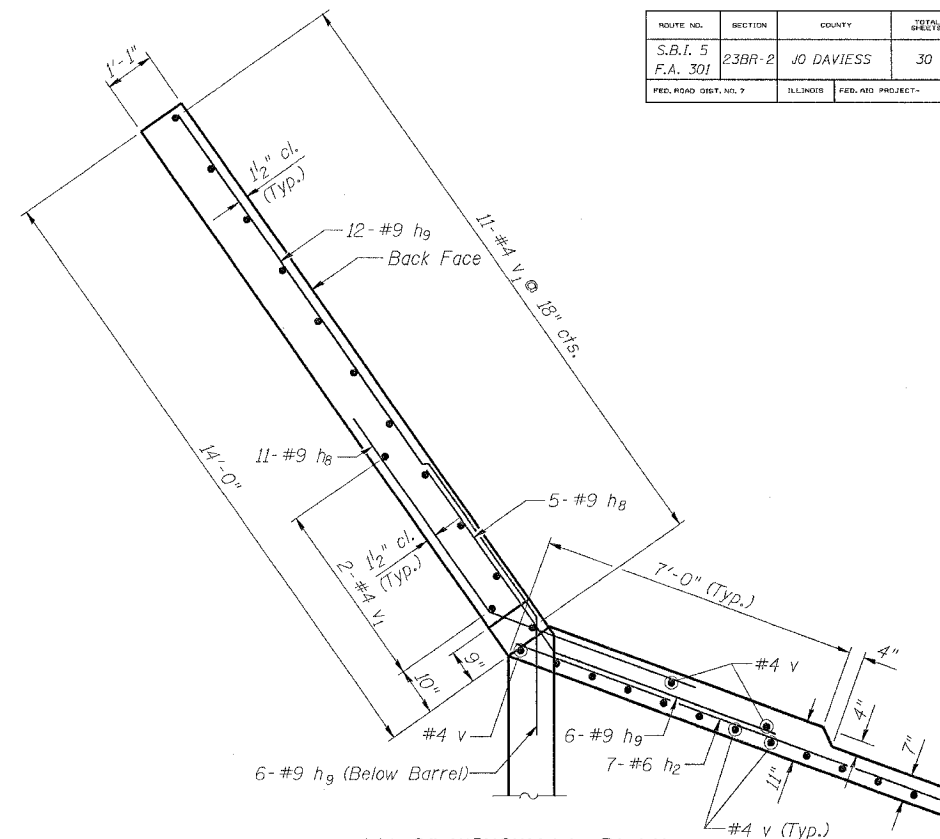


STATE OF ILLINOIS
DEPARTMENT OF TRANSPORTATION

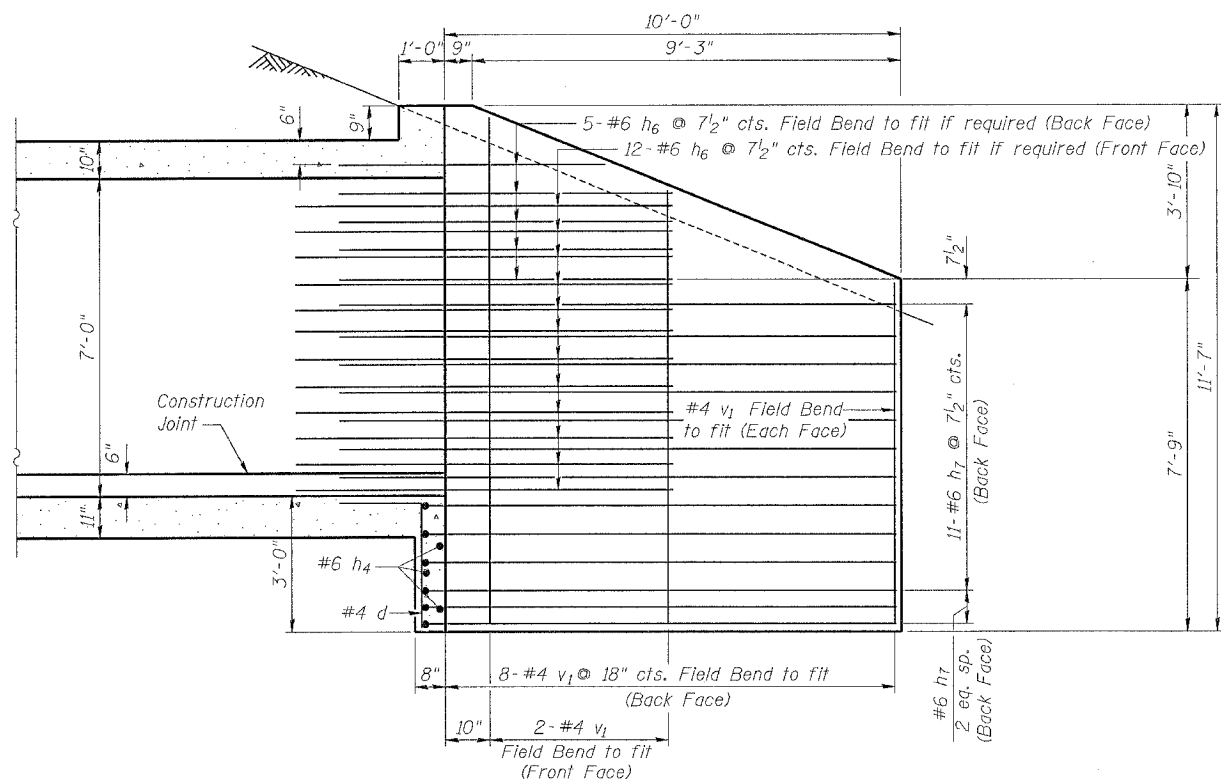
| | | | | | |
|-----------------------|----------|-------------------|--------------|-----------|----------------------------|
| ROUTE NO. | SECTION | COUNTY | TOTAL SHEETS | SHEET NO. | SHEET NO. 6 OF 8 SHEETS |
| S.B.I. 5 F.A. 301 | 23BR-2 | JO DAVIESS | 30 | 14 | |
| FED. ROAD DIST. NO. 7 | ILLINOIS | FED. AID PROJECT- | | | |



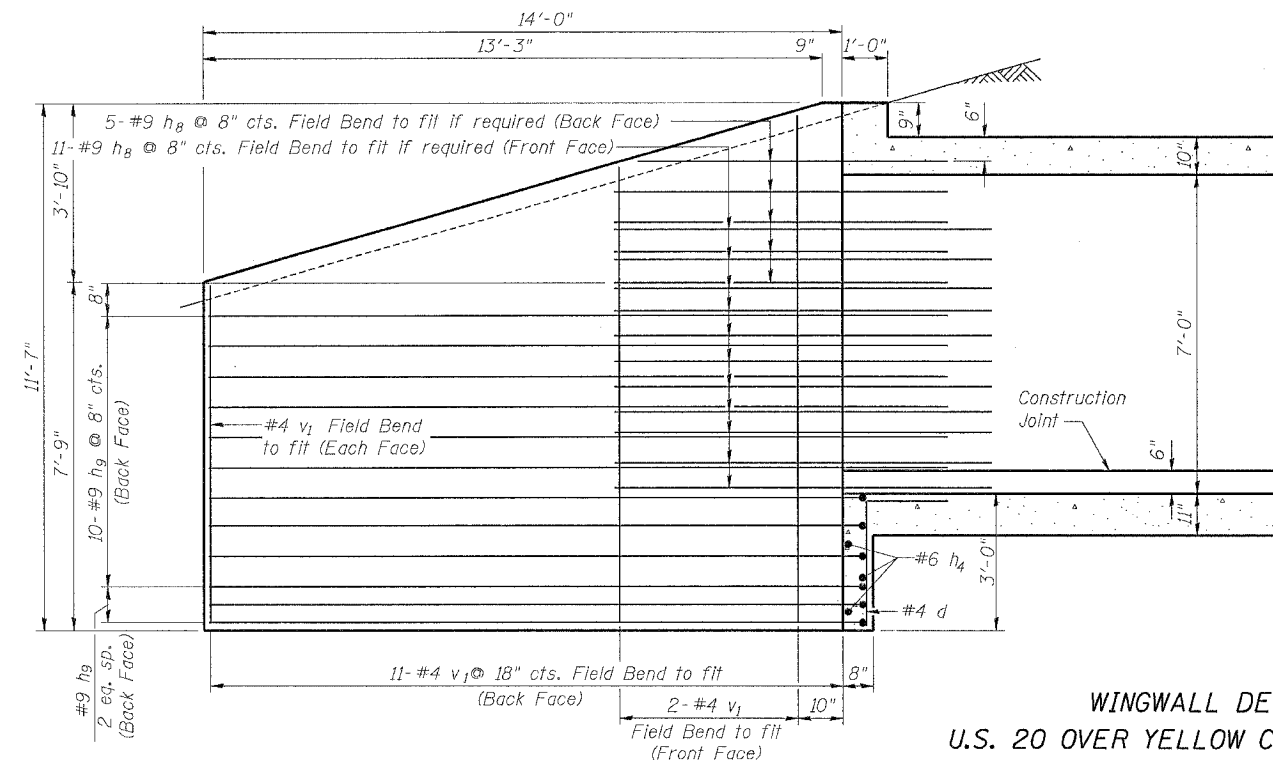
10'-0" WINGWALL PLAN



14'-0" WINGWALL PLAN



10'-0" WINGWALL ELEVATION



14'-0" WINGWALL ELEVATION

WINGWALL DETAILS
U.S. 20 OVER YELLOW CREEK TRIBUTARY
FA ROUTE 301 SECTION 23BR-2
JO DAVIESS COUNTY
STATION 123+36.00
STRUCTURE NUMBER 043-2006

| | |
|----------|--------|
| DESIGNED | L.C.M. |
| CHECKED | S.D.K. |
| DRAWN | T.L.N. |
| CHECKED | S.D.K. |

| | |
|----------|------------------------------------|
| EXAMINED | 20 |
| PASSED | ENGINEER OF BRIDGE DESIGN |
| | ENGINEER OF BRIDGES AND STRUCTURES |

