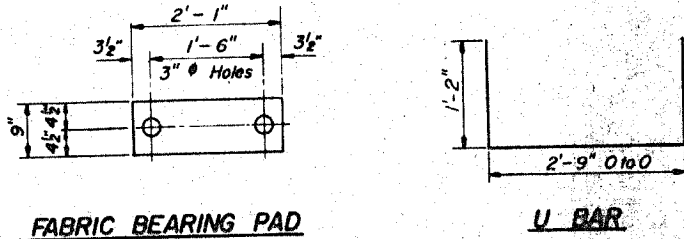


STATE OF ILLINOIS
DEPARTMENT OF PUBLIC WORKS & BUILDINGS
DIVISION OF HIGHWAYS

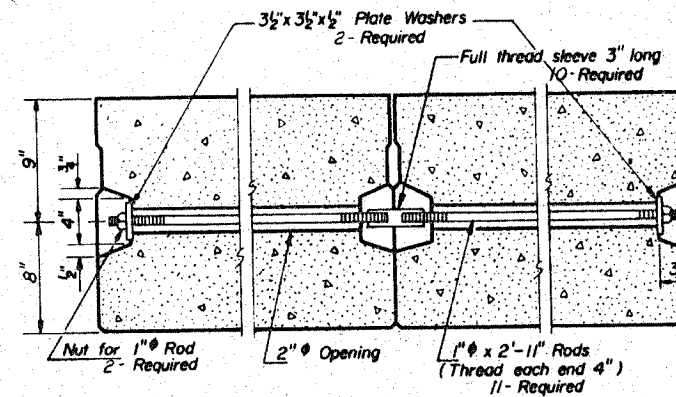
CONTRACT NO. 64412

F.A.P. RTE.	SECTION	COUNTY	TOTAL SHEETS	SHEET NO.
301	23 BR-2	JO DAVIESS	30	19
STA.		TO STA.		
FED. ROAD DIST. NO.		ILLINOIS FED. AID PROJECT		

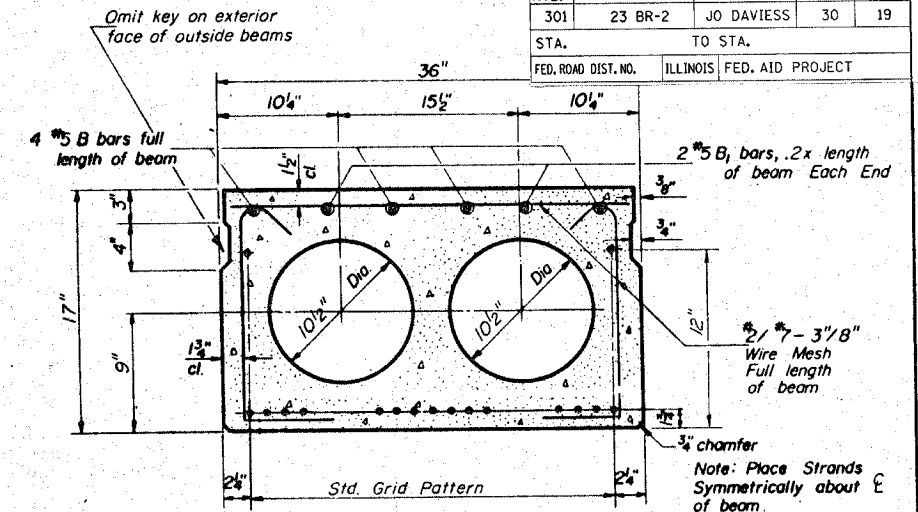


FABRIC BEARING PAD

U BAR

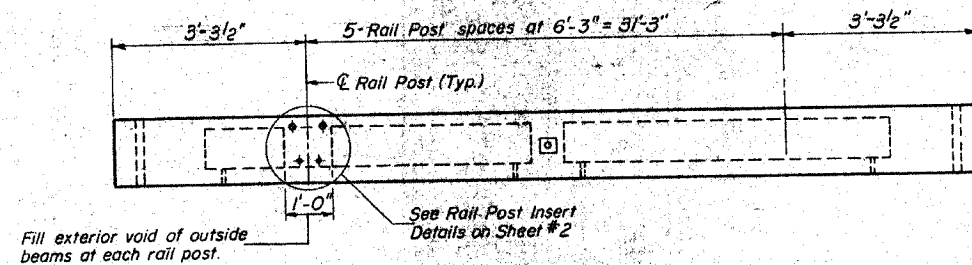


TYPICAL TRANSVERSE TIE ASSEMBLY

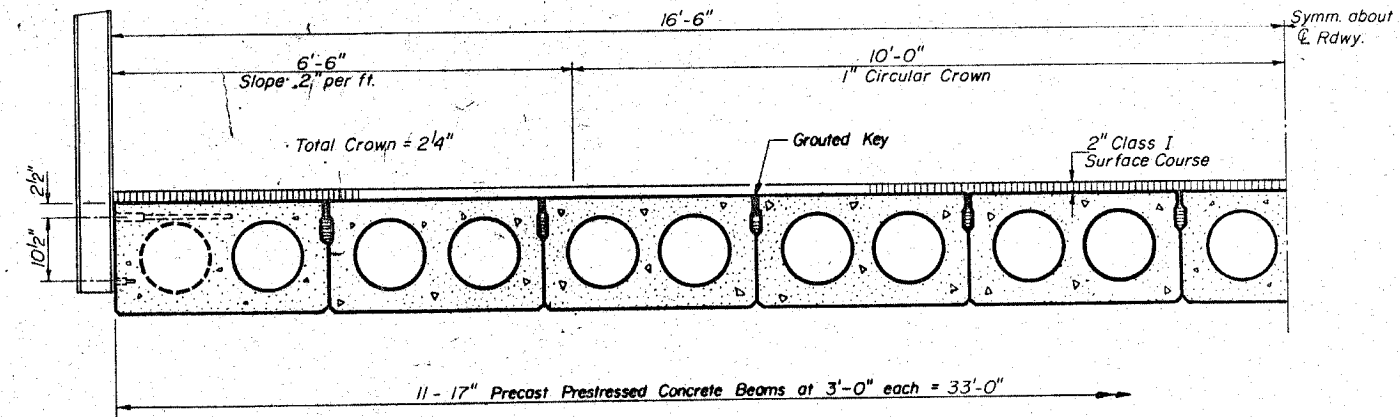


TYPICAL SECTION

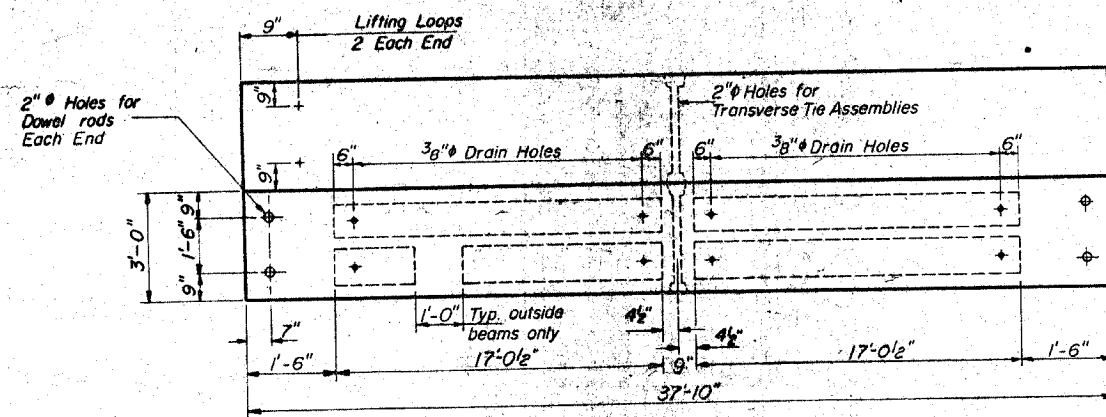
7/8" Strands Each Strand Stressed to 18,900 lbs.
15-Strands 1 3/4" up 2-Strands 12" up



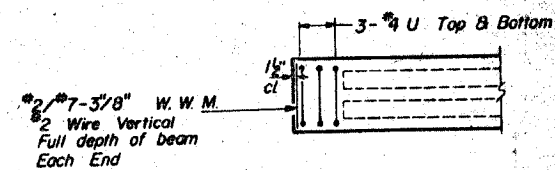
ELEVATION



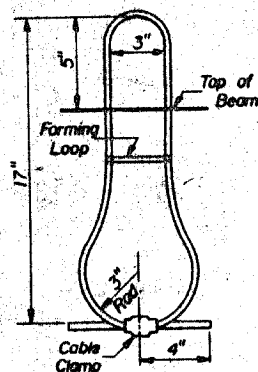
HALF CROSS SECTION



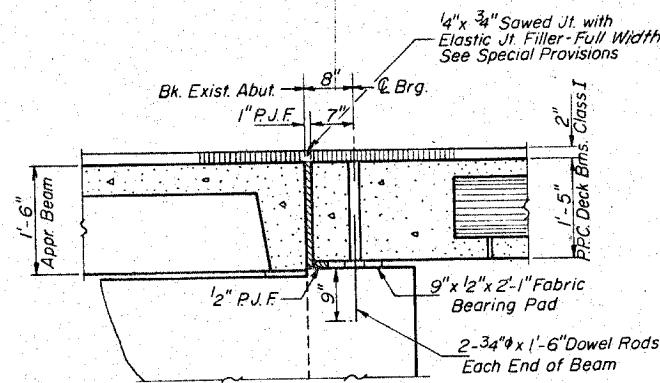
PARTIAL PLAN



END PLAN



LIFTING LOOP DETAIL



SECTION THRU ABUT. AT OUTSIDE BEAM

GENERAL NOTES

Prestressing steel shall be non-galvanized high strength, stress-relieved 7-wire strand. The nominal diameter shall be 7/8" and the nominal cross-sectional area shall be 0.109 sq. in.. Lifting loops shall be 1/2" diameter, 6x19 class wire rope with fiber core and shall have a minimum ultimate tensile strength of 18,700 lbs. The 1" rods in the transverse tie assembly shall be tightened to a snug fit and the threads set. Pockets that receive transverse tie bar on outside beam shall be filled with grout after transverse tie assembly is in place. Longitudinal shear keys shall be packed with a very dry mix of 2:1 sand and P.C. mortar. After beams have been erected, holes for the dowel anchors shall be drilled into the sub-structure and the anchor dowels shall be grouted in place. Steel for dowel rods, transverse tie rods, and armor angles shall be S.A.E. 1020, structural steel A.S.T.M. Designation: A36, or intermediate grade A.S.T.M. Designation: A15. After fabrication the transverse tie assemblies (tie rods, nuts, washers and sleeves) shall be hot-dipped galvanized in accordance with A.S.T.M. Designation: A153. Cost of reinforcement and accessories cast into the beam, of bearing pads, of armor angles, and of grouting longitudinal shear keys is included in unit price bid for "Precast Prestressed Concrete Deck Beams."

BILL OF MATERIAL

Item	Sq. Ft.	Quantity
Precast Prestressed Concrete Deck Beams		1248
Removal of Existing Superstructure	Each	1

SUPERSTRUCTURE
S.B.I. RT. 5 SEC. 23 BR
JO DAVIESS COUNTY
STA. 123 + 25

DESIGNED	James Pence
CHECKED	Jack Armstrong
DRAWN	J. L. Armstrong
CHECKED	JP

EXAMINED	Aug. 7 1965
PASSED	Richard H. Holloman
APPROVED	Richard H. Holloman