

FAS ROUTE	SECTION	COUNTY	TOTAL SHEETS	SHEET NO
1197	105 BR-2	WHITESIDE	59	6
STA. 224+00		TO STA. 232+00		

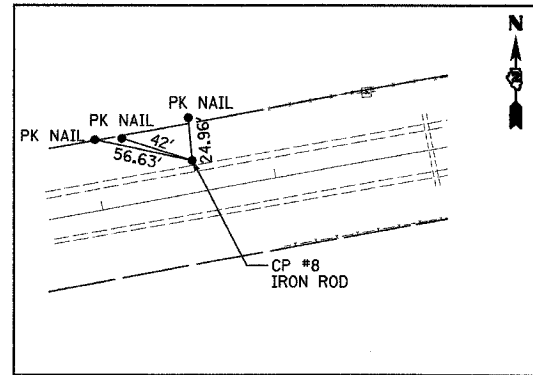
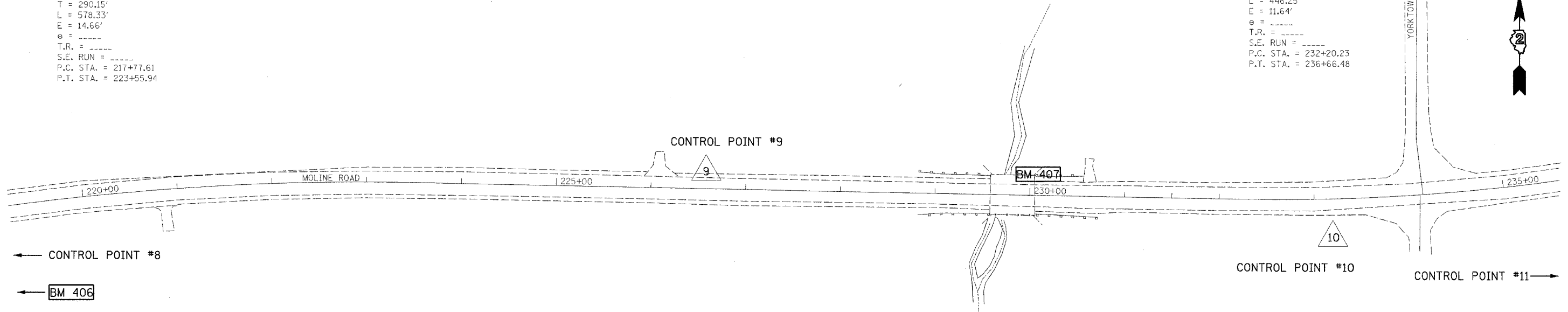
CONTRACT 64421

EXIST. CURVE C2
 PI STA. = 234+44.16
 $\Delta = 11^\circ 54' 00''$ (LT)
 $D = 2^\circ 40' 00''$
 $R = 2,148.59'$
 $T = 223.93'$
 $L = 446.25'$
 $E = 11.64'$
 $e = \text{---}$
 $T.R. = \text{---}$
 $S.E. RUN = \text{---}$
 $P.C. STA. = 232+20.23$
 $P.T. STA. = 236+66.48$

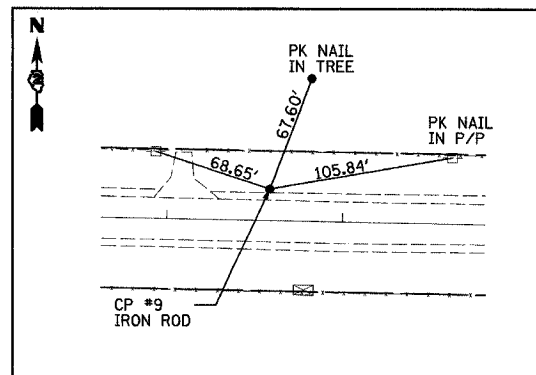


EXIST. CURVE C1
 PI STA. = 220+67.76
 $\Delta = 11^\circ 34' 00''$ (RT)
 $D = 2^\circ 00' 00''$
 $R = 2,864.79'$
 $T = 290.15'$
 $L = 578.33'$
 $E = 14.66'$
 $e = \text{---}$
 $T.R. = \text{---}$
 $S.E. RUN = \text{---}$
 $P.C. STA. = 217+77.61$
 $P.T. STA. = 223+55.94$

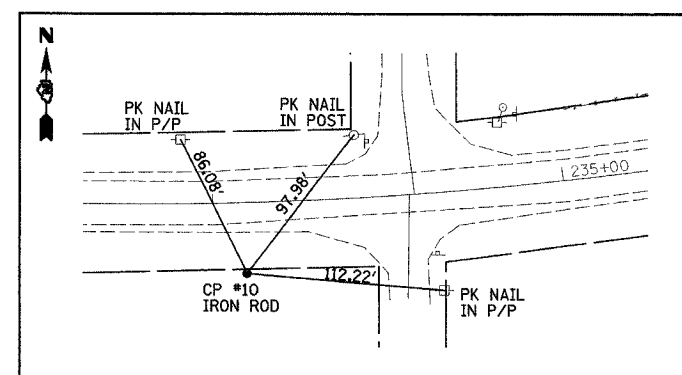
DATE	BY



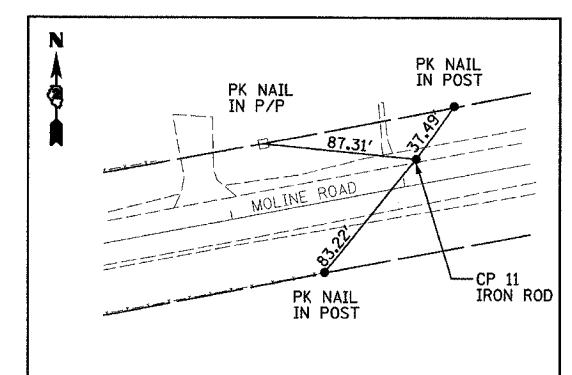
CONTROL POINT #8
 STA 216+55.13, 18.421 LT
 N 1847212.9742
 E 2378028.7029



CONTROL POINT #9
 STA 226+58.25, 17.87 LT
 N 1847277.4184
 E 2379030.4301



CONTROL POINT #10
 STA 233+18.76 40.60' RT
 N 1847200.0222
 E 2379803.4551



CONTROL POINT #11
 STA 243+09.06 14.54' LT
 N 1847357.9048
 E 2380612.3144

BENCHMARKS

BM 406 "□" CUT ON CONCRETE HEADWALL OF
 CULVERT
 STA. 214+81.2 28.5' LT
 ELEV. 620.58

BM 407 "□" CUT ON TOP OF NORTH EAST WINGWALL
 OF BRIDGE
 STA. 230+06.6 23.3' LT
 ELEV. 618.83

NOTE:
 BASIS OF BEARINGS AND COORDINATES IS
 ILLINOIS STATE PLANE (NAD83) WEST ZONE.
 GROUND VALUES SHOWN (COMBINED GRID
 FACTOR FOR PROJECT AREA 0.999929977).
 NGS MONUMENTS BUR40-1A & BUR40-1B WERE
 USED FOR CONTROL.

REVISIONS	
NAME	DATE

ILLINOIS DEPARTMENT OF TRANSPORTATION
 FAS ROUTE 1197 (MOLINE ROAD)
 SECTION 105BR-2
 WHITESIDE COUNTY
**ALIGNMENT & TIES
 BENCHMARKS**

DRAWN BY: HLC

11/3/2004
 DATE TIME
 REF