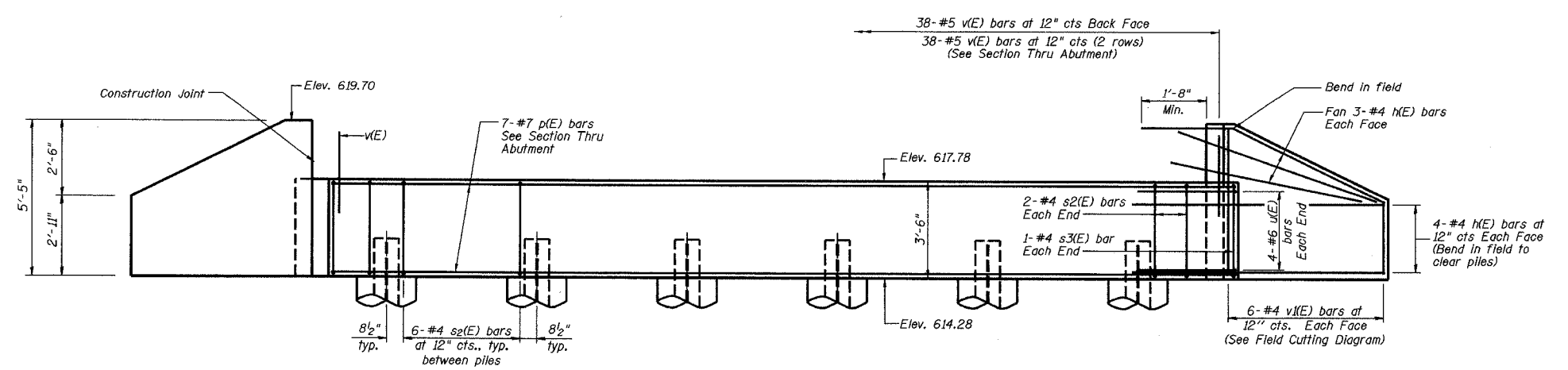


STATE OF ILLINOIS
DEPARTMENT OF TRANSPORTATION

ROUTE NO.	SECTION	COUNTY	TOTAL SHEETS	SHEET NO.
FAS 1197	105BR-2	WHITESIDE	59	22
FED. ROAD DIST. NO.	ILLINOIS	PROJECT		

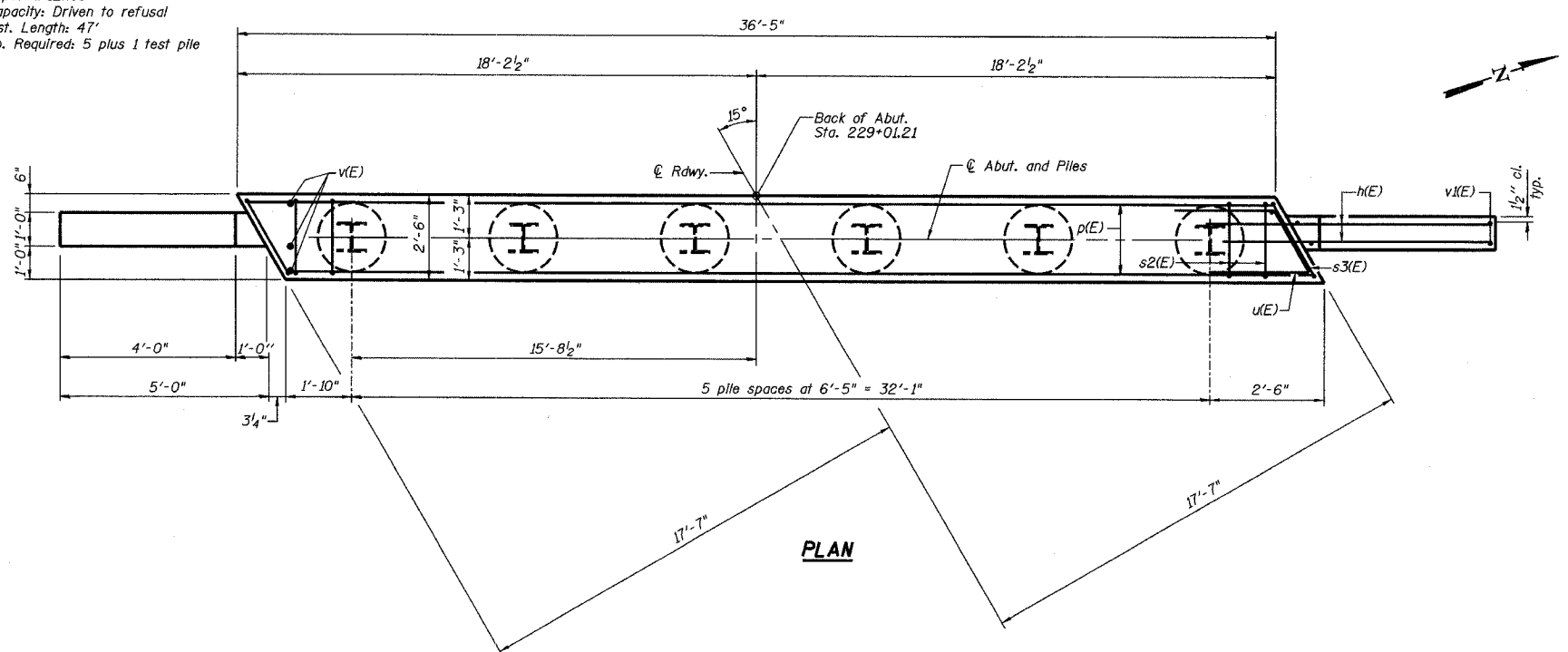
Sheet No. 7
of 11 Sheets

CONTRACT 64421

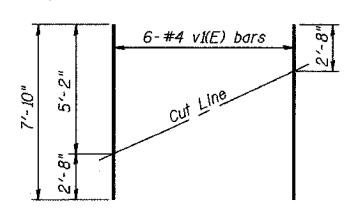
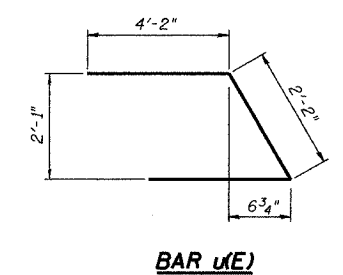
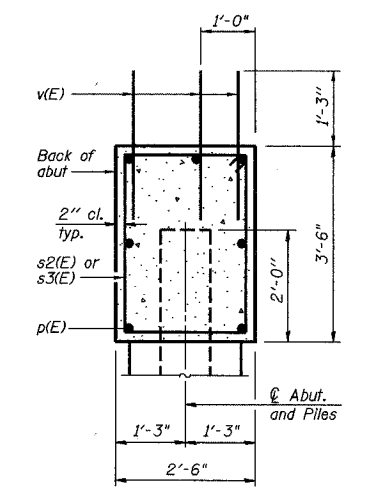
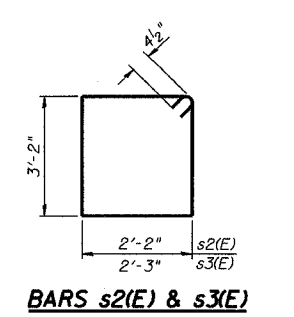


ELEVATION
(Looking West)

PILE DATA
Type: HP12x63
Capacity: Driven to refusal
Est. Length: 47'
No. Required: 5 plus 1 test pile



PLAN

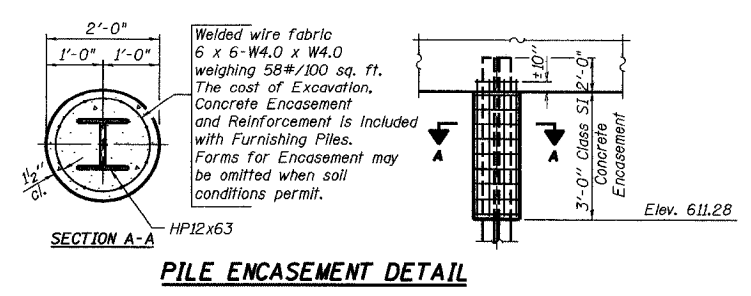


Order v(E) full length. Cut as shown and use remainder of bars in opposite face.

BILL OF MATERIAL

Bar	No.	Size	Length	Shape
h(E)	28	#4	7'-3"	—
p(E)	7	#7	36'-1"	—
s2(E)	34	#4	11'-5"	□
s3(E)	2	#4	11'-7"	□
u(E)	8	#6	10'-6"	⌒
v(E)	114	#5	3'-5"	—
v(E)	12	#4	7'-10"	—
Structure Excavation			Cu. Yd.	35
Concrete Structures			Cu. Yd.	13.4
Reinforcement Bars, Epoxy Coated			Pound	1520
Furnishing Steel Piles HP12x63			Foot	235
Driving Steel Piles HP12x63			Foot	235
Test Pile Steel HP12x63			Each	1

Reinforcement bars designated (E) shall be epoxy coated.



REVISIONS			WEST ABUTMENT DETAILS	
No.	DATE	INITIALS		
1			MOLINE ROAD OVER UNNAMED TRIBUTARY TO ROCK RIVER	
2			FAS ROUTE 1197 SECTION 105BR-2	
3			STA 229+67.50 SN 098-0110 WHITESIDE COUNTY	
4			HOMER L. CHASTAIN & ASSOCIATES, LLP CONSULTING ENGINEERS 184-001397	
5			PROJECT NO.	4858-3
6			SHEET NO.	

DRAWN BY DATE: R King 8/04
CHECKED BY DATE: CMV 8/04
QA/QC BY DATE: CWC 8/04
BOOK NUMBER