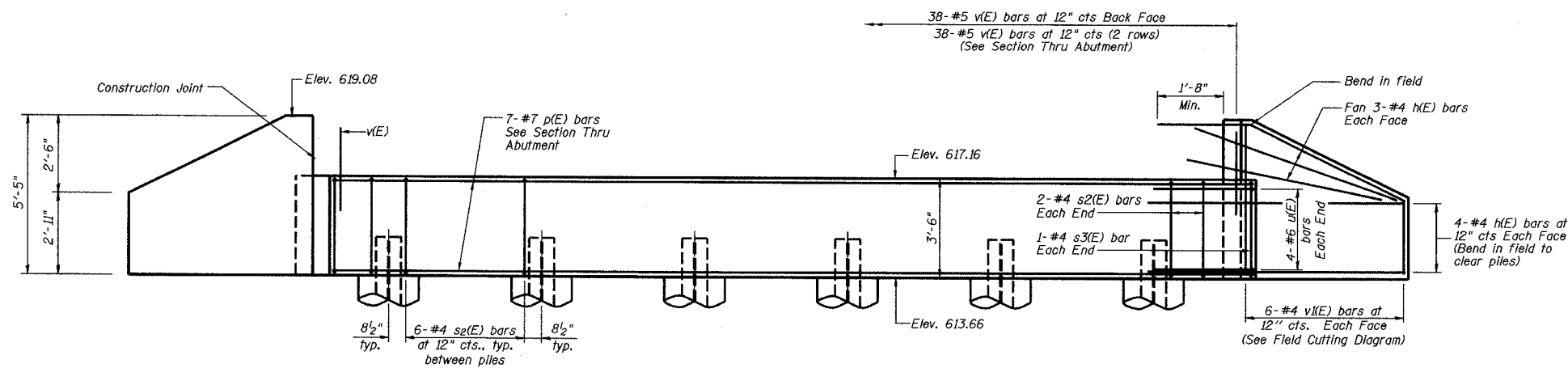


STATE OF ILLINOIS  
DEPARTMENT OF TRANSPORTATION

Sheet No. 8  
of 11 Sheets

ROUTE NO.	SECTION	COUNTY	TOTAL SHEETS	SHEET NO.
FAS 1197	105BR-2	WHITESIDE	59	23
FEDERAL DIST. NO.	ILLINOIS	PROJECT		

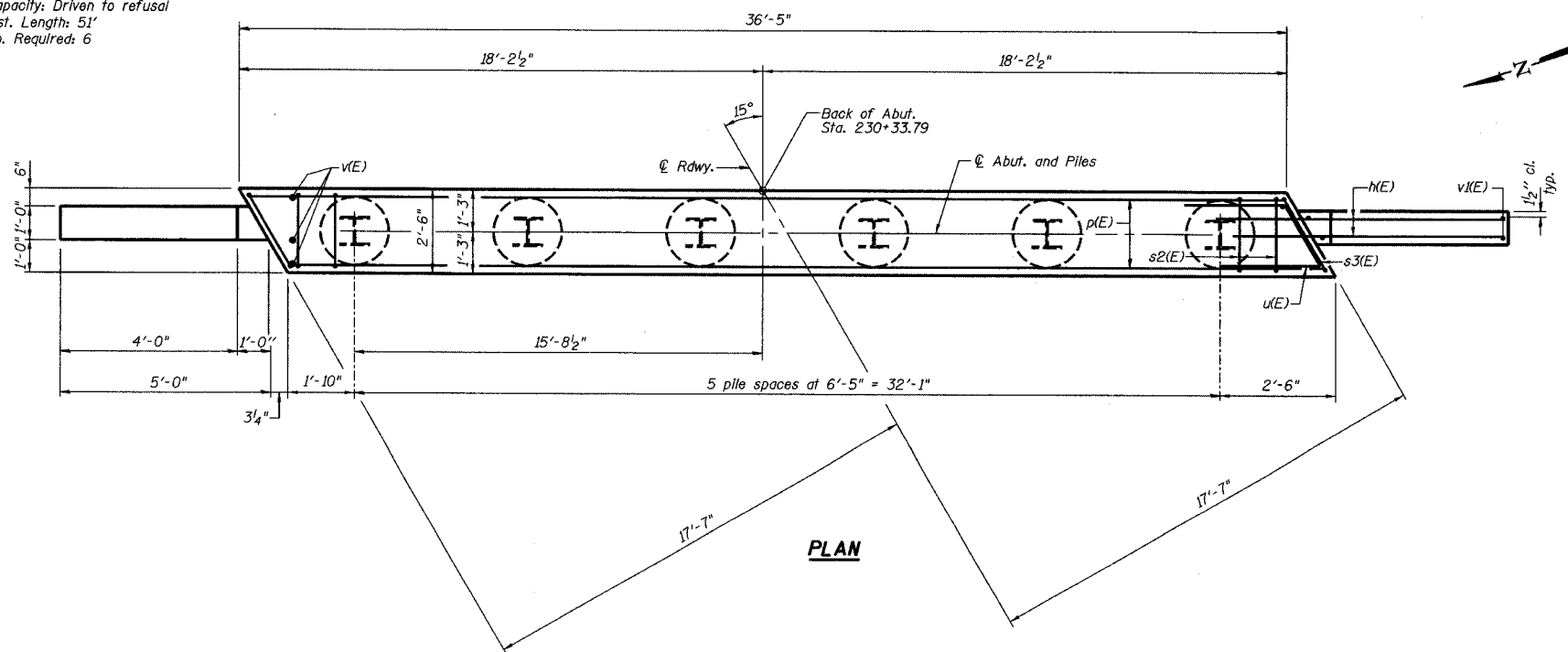
CONTRACT 64421



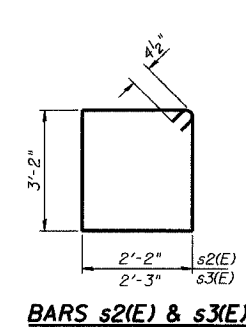
**ELEVATION**  
(Looking East)

**PILE DATA**

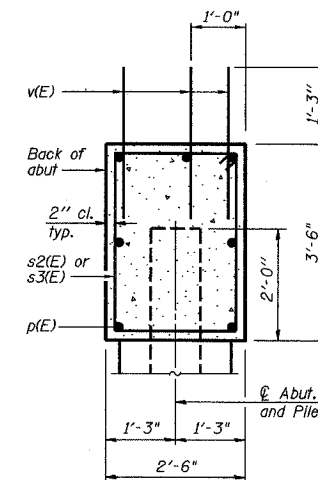
Type: HP12x63  
Capacity: Driven to refusal  
Est. Length: 51'  
No. Required: 6



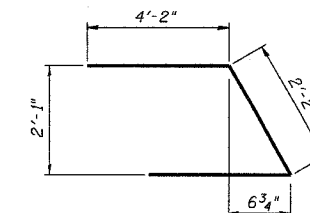
**PLAN**



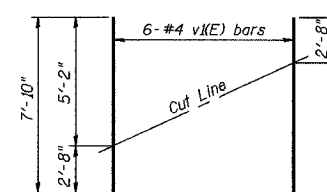
**BARS s2(E) & s3(E)**



**SECTION THRU ABUTMENT**



**BAR u(E)**



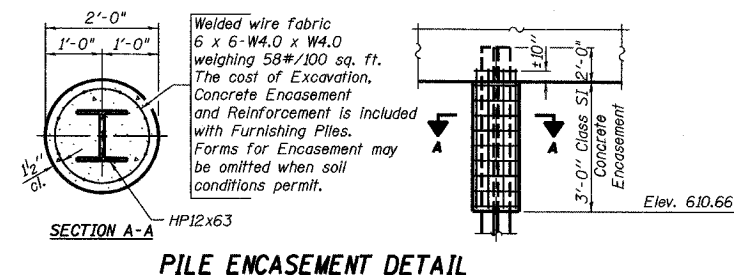
**FIELD CUTTING DIAGRAM**

Order v(E) full length. Cut as shown and use remainder of bars in opposite face.

**BILL OF MATERIAL**

Bar	No.	Size	Length	Shape
h(E)	28	#4	7'-3"	—
p(E)	7	#7	36'-1"	—
s2(E)	34	#4	11'-5"	□
s3(E)	2	#4	11'-7"	□
u(E)	8	#6	10'-6"	—
v(E)	114	#5	3'-5"	—
v(E)	12	#4	7'-10"	—
Structure Excavation		Cu. Yd.	35	
Concrete Structures		Cu. Yd.	13.4	
Reinforcement Bars, Epoxy Coated		Pound	1520	
Furnishing Steel Piles HP12x63		Foot	306	
Driving Steel Piles		Foot	306	

Reinforcement bars designated (E) shall be epoxy coated.



**PILE ENCASEMENT DETAIL**

REVISIONS			EAST ABUTMENT DETAILS	
No.	DATE	INITIALS	MOLINE ROAD OVER UNNAMED TRIBUTARY TO ROCK RIVER	
1			FAS ROUTE 1197 SECTION 105BR-2	
2			SN 098-0110	
3			STA 229+67.50 WHITESIDE COUNTY	
4			HOMER L. CHASTAIN & ASSOCIATES, LLP	
5			CONSULTING ENGINEERS	
6			184-001397	
7			DRAWN BY DATE: R King 8/04	
8			CHECKED BY DATE: CMV 8/04	
9			DATE BY DATE: CWC 8/04	
10			PROJECT NO. 4858-3	
11			SHEET NO.	
12				