

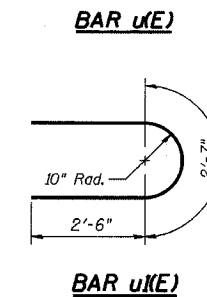
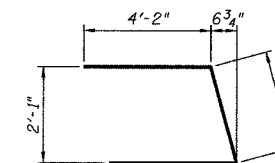
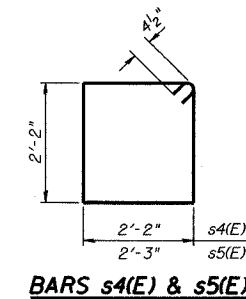
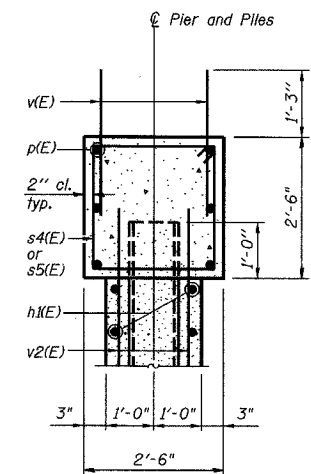
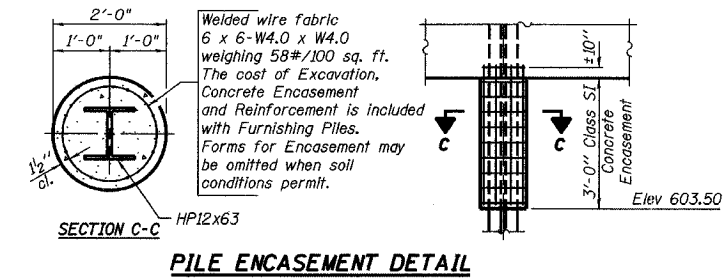
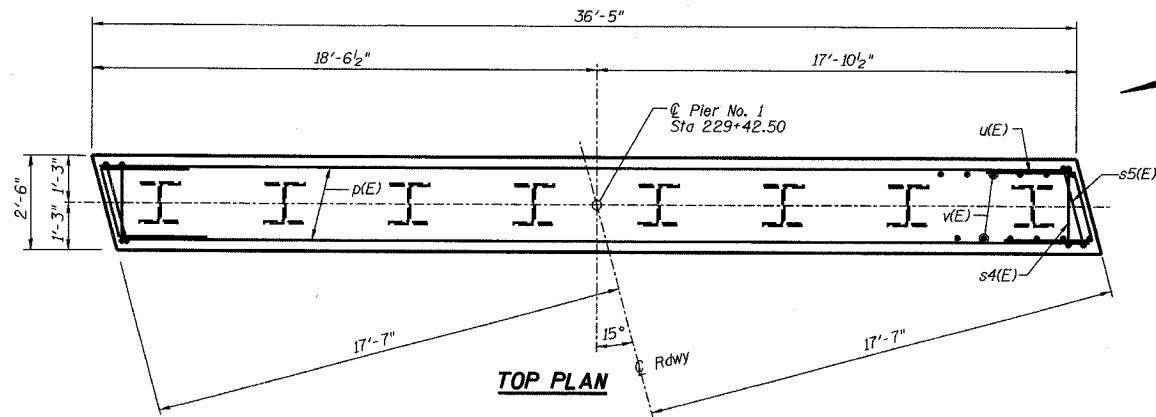
STATE OF ILLINOIS  
DEPARTMENT OF TRANSPORTATION

Sheet No. 9  
of 11 Sheets

ROUTE NO.	SECTION	COUNTY	TOTAL SHEETS	SHEET NO.
FAS 1197	105BR-2	WHITESIDE	59	24
FED. ROAD DIST. NO.	ILLINOIS	PROJECT	CONTRACT 64421	

**PILE DATA**

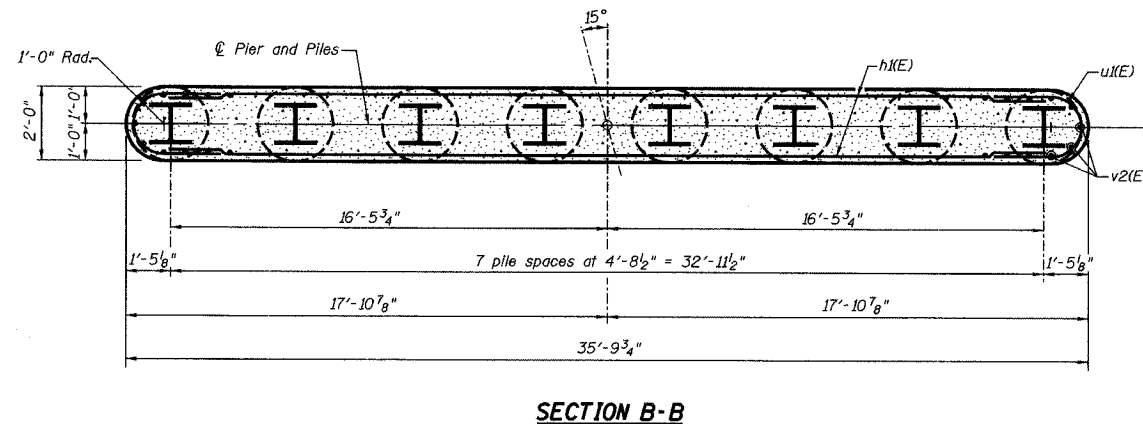
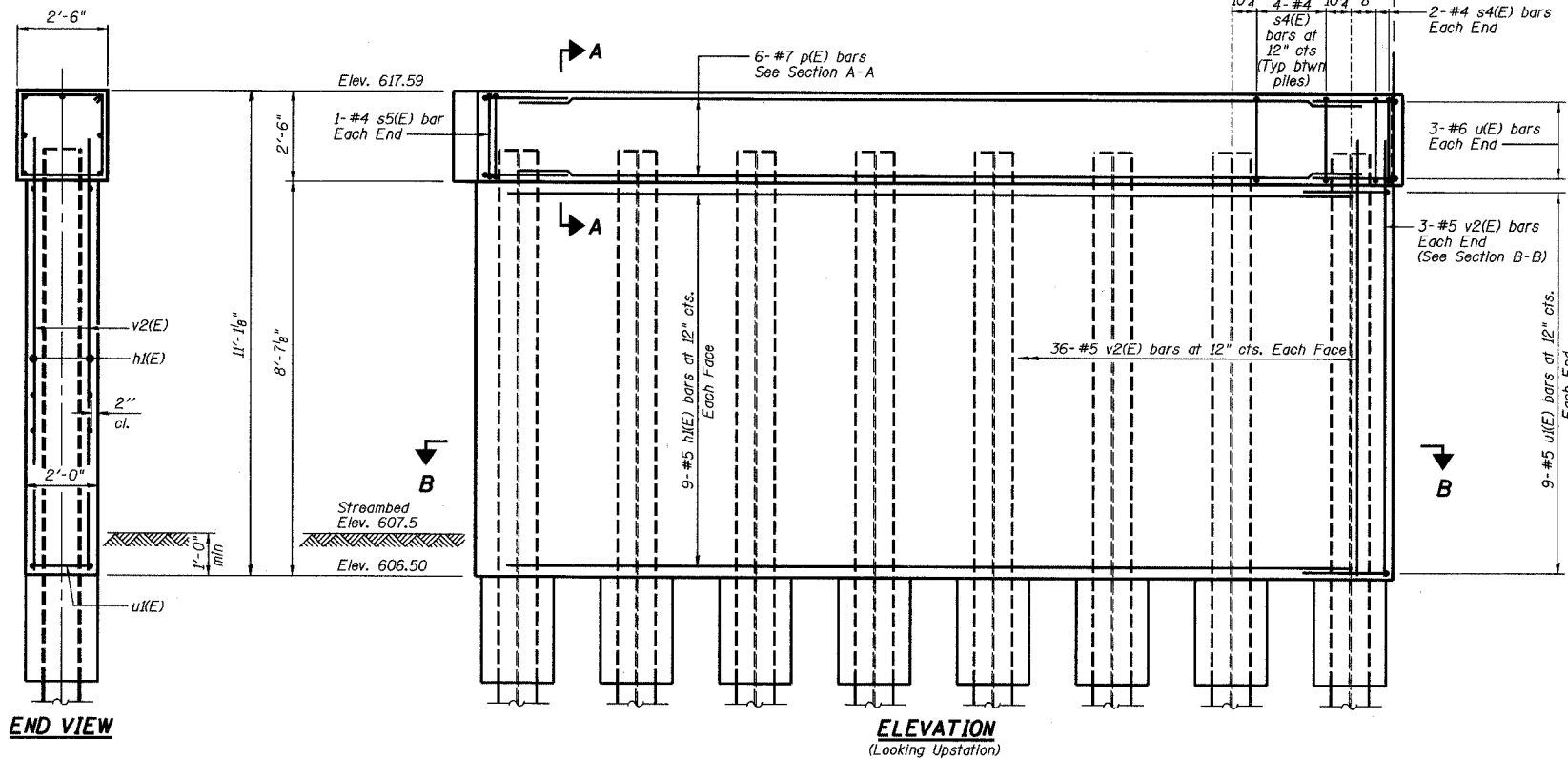
Type: HPI2x63  
Capacity: Driven to refusal  
Est. Length: 50'  
No. Required: 8



**BILL OF MATERIAL**

Bar	No.	Size	Length	Shape
h(E)	18	#5	33'-0"	—
p(E)	6	#7	36'-1"	—
s4(E)	32	#4	9'-5"	□
s5(E)	2	#4	9'-7"	□
u(E)	6	#6	10'-6"	J
u(E)	18	#5	7'-7"	J
v(E)	76	#5	3'-5"	—
v2(E)	78	#5	9'-9"	—
Structure Excavation		Cu. Yd.	42	
Concrete Structures		Cu. Yd.	31.0	
Reinforcement Bars, Epoxy Coated		Pound	2580	
Furnishing Steel Piles HPI2x63		Foot	400	
Driving Steel Piles		Foot	400	
Underwater Structure Excavation Protection - Location 1		Each	1	

Reinforcement Bars designated (E) shall be epoxy coated.



REVISIONS		PIER NO. 1 DETAILS		DRAWN BY DATE	
No.	DATE	MOLINE ROAD OVER UNNAMED TRIBUTARY TO ROCK RIVER		R King 8/04	
1		FAS ROUTE 1197 SECTION 105BR-2		CHECKED BY DATE	
2		STA 229+67.50 SN 098-0110		CMV 8/04	
3		WHITESIDE COUNTY		QA/QC BY DATE	
4		HOMER L. CHASTAIN & ASSOCIATES, LLP		CWC 8/04	
5		CONSULTING ENGINEERS		BOOK NUMBER	
6		184-001397		PROJECT No.	
7				4858-3	
8				SHEET No.	
9					
10					
11					
12					