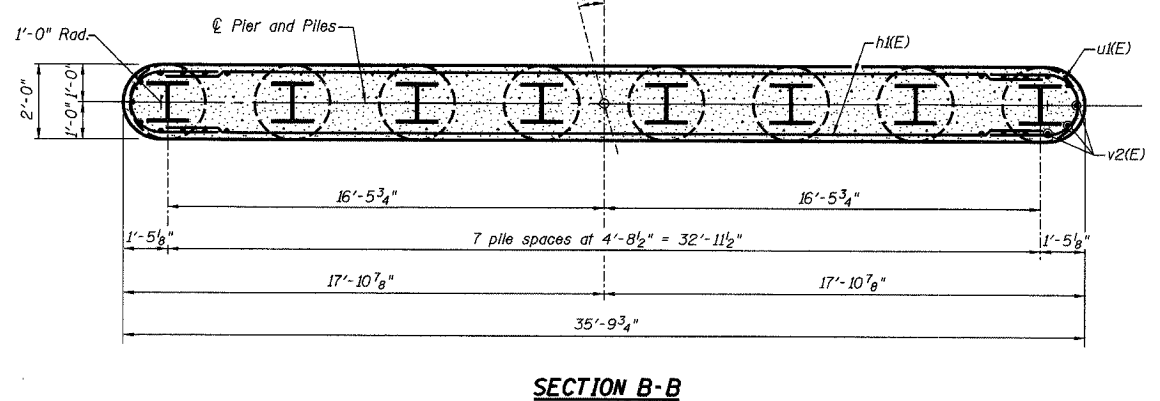
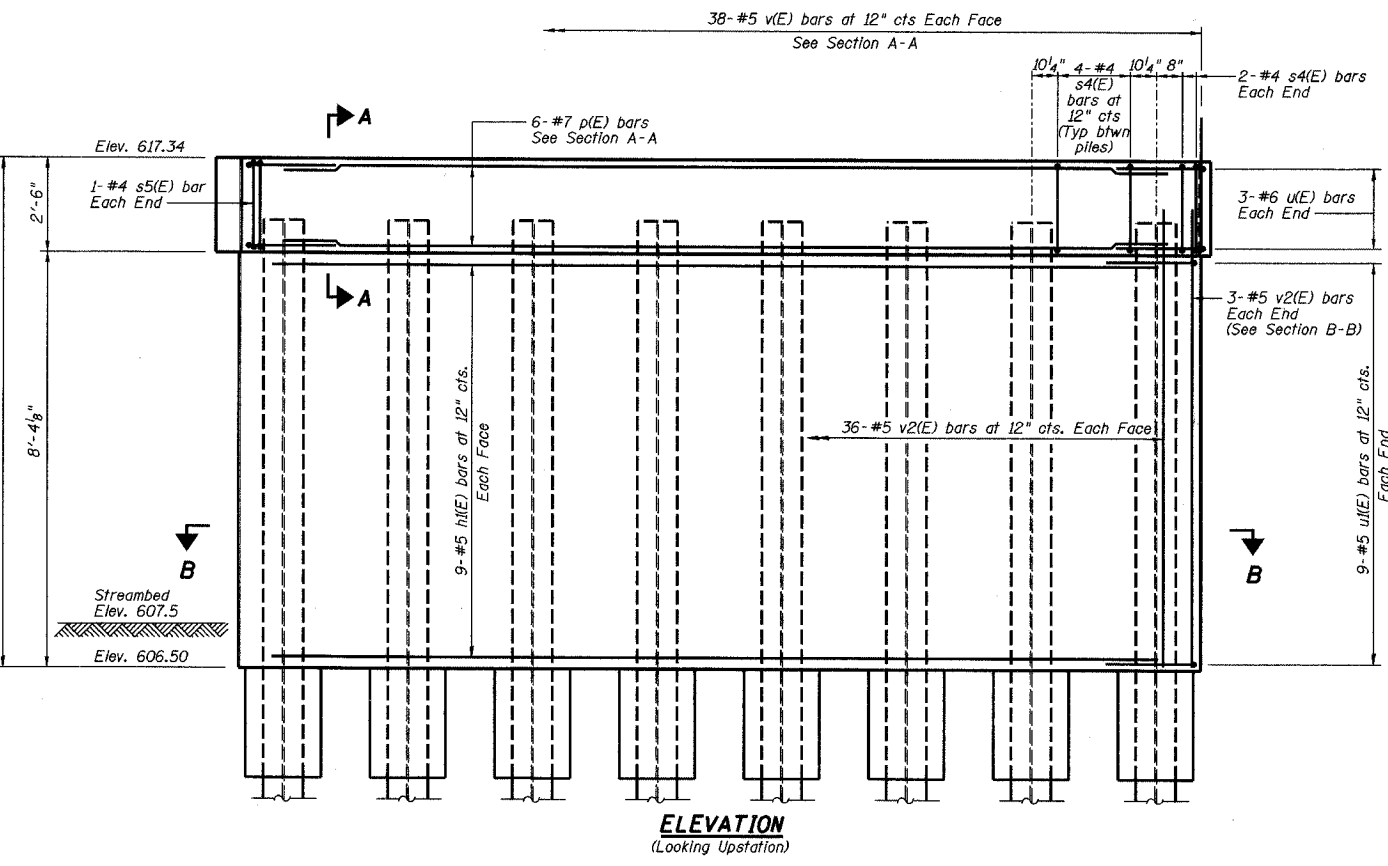
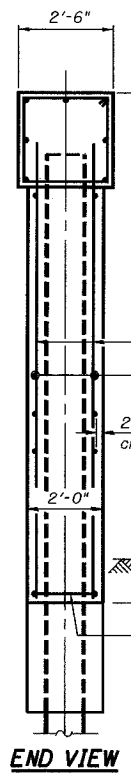
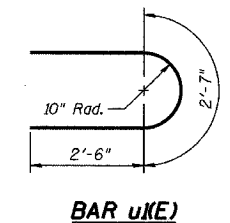
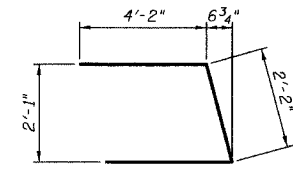
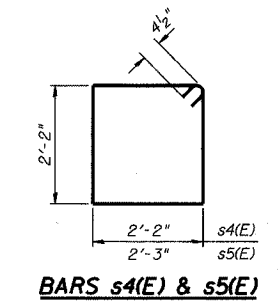
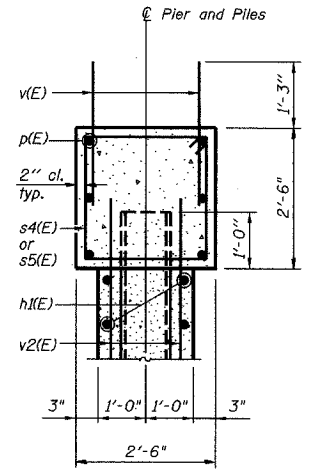
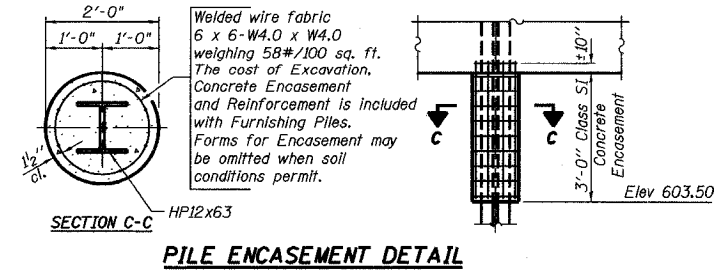
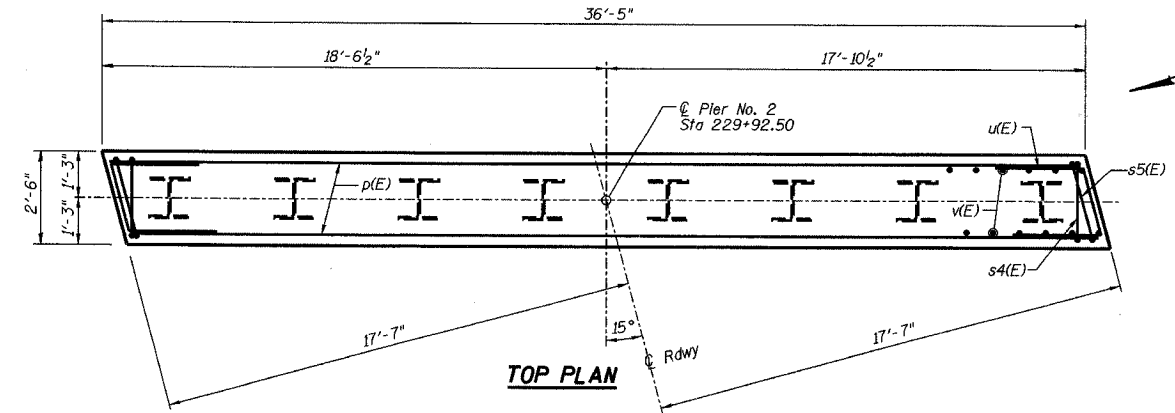


STATE OF ILLINOIS  
DEPARTMENT OF TRANSPORTATION

|                     |                  |                |              |           |
|---------------------|------------------|----------------|--------------|-----------|
| ROUTE NO.           | SECTION          | COUNTY         | TOTAL SHEETS | SHEET NO. |
| FAS 1197            | 105BR-2          | WHITESIDE      | 59           | 25        |
| FED. ROAD DIST. NO. | ILLINOIS PROJECT | CONTRACT 64421 |              |           |

**PILE DATA**

Type: HP12x63  
Capacity: Driven to refusal  
Est. Length: 55'  
No. Required: 8



**BILL OF MATERIAL**

| Bar   | No. | Size    | Length | Shape |
|---|-----|---------|--------|-------|
| h(E)  | 18  | #5      | 33'-0" | —     |
| p(E)  | 6   | #7      | 36'-1" | —     |
| s4(E)   | 32  | #4      | 9'-5"  | □     |
| s5(E)   | 2   | #4      | 9'-7"  | □     |
| u(E)  | 6   | #6      | 10'-6" | U     |
| u(E)  | 18  | #5      | 7'-7"  | U     |
| v(E)  | 76  | #5      | 3'-5"  | —     |
| v2(E)   | 78  | #5      | 9'-9"  | —     |
| Structure Excavation                                    |     | Cu. Yd. |        | 9     |
| Concrete Structures                                     |     | Cu. Yd. |        | 30.4  |
| Reinforcement Bars, Epoxy Coated                        |     | Pound   |        | 2580  |
| Furnishing Steel Piles HP12x63                          |     | Foot    |        | 440   |
| Driving Steel Piles                                     |     | Foot    |        | 440   |
| Underwater Structure Excavation Protection - Location 2 |     | Each    |        | 1     |

Reinforcement Bars designated (E) shall be epoxy coated.

**PIER NO. 2 DETAILS**

|                                |  |   |  |                              |
|--------------------------------|--|---|--|------------------------------|
| REVISIONS<br>No. DATE INITIALS |  | MOLINE ROAD OVER UNNAMED<br>TRIBUTARY TO ROCK RIVER                       |  | DRAWN BY DATE<br>R King 8/04 |
|                                |  | FAS ROUTE 1197 SECTION 105BR-2  |  | CHECKED BY DATE<br>CMV 8/04  |
|                                |  | STA 229+67.50 SN 098-0110   |  | QA/QC BY DATE<br>CWC 8/04    |
|                                |  | WHITESIDE COUNTY  |  | PROJECT No.<br>4858-3        |
|                                |  | HOMER L. CHASTAIN & ASSOCIATES, LLP<br>CONSULTING ENGINEERS<br>184-001397 |  | SHEET No.                    |