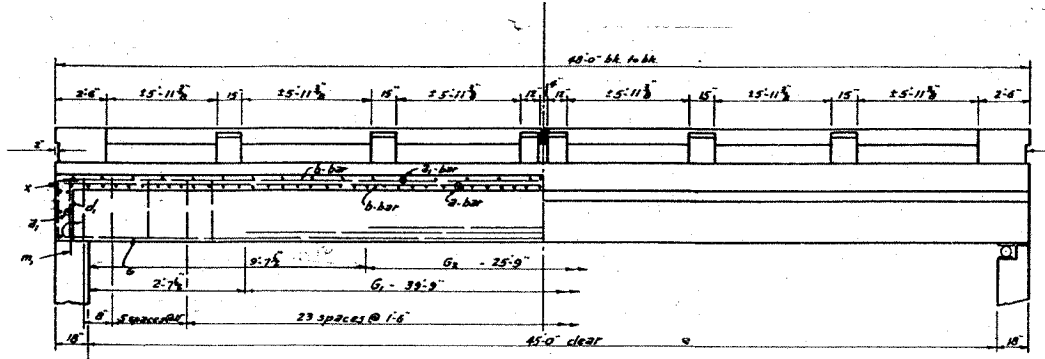


STATE OF ILLINOIS  
DEPARTMENT OF PUBLIC WORKS & BUILDINGS  
DIVISION OF HIGHWAYS

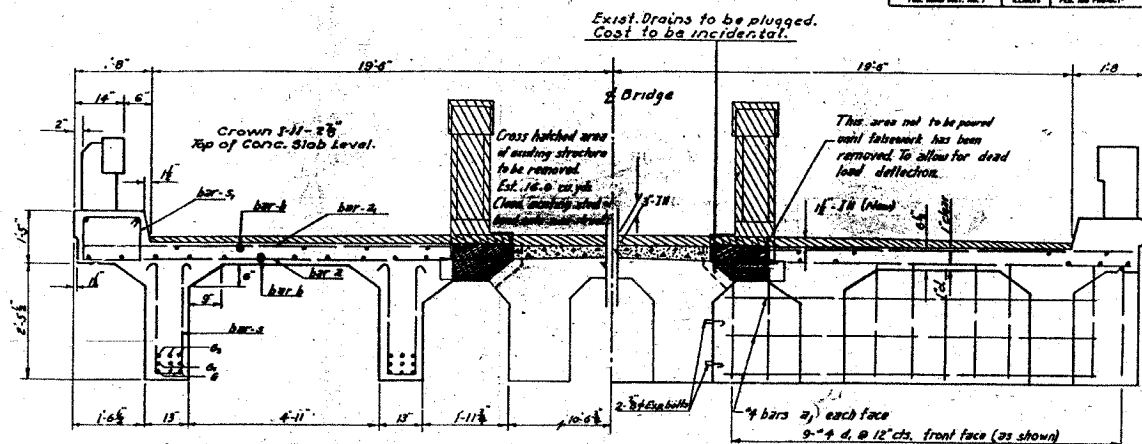
FOR INFORMATION ONLY

P.W. NO.	SECTION	COUNTY	TOTAL SHEETS	SHEET NO.
1197	105 BR-2	Whiteside	59	33
SHEET NO. 2 3 SHEETS				



**ELEVATION**

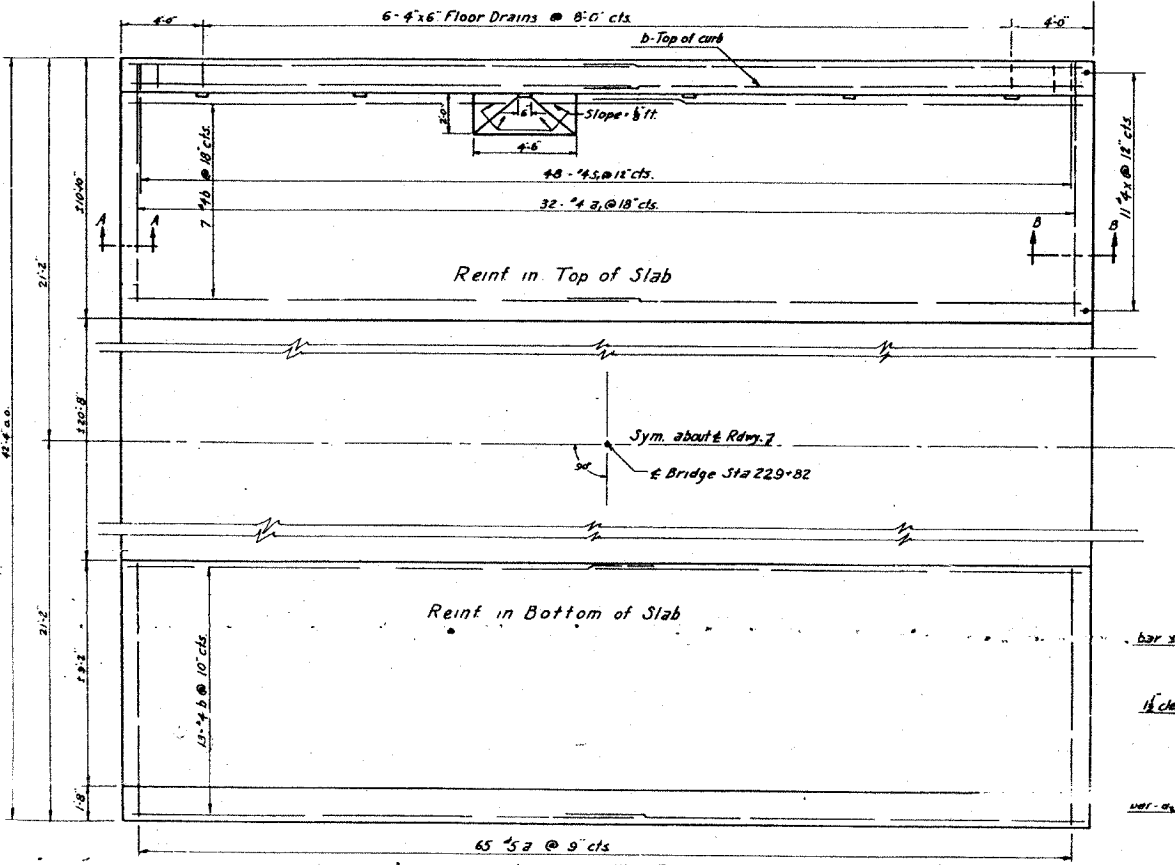
Handrail Details  
See Std 2070 RB  
Type 3B



**AT & SPAN**

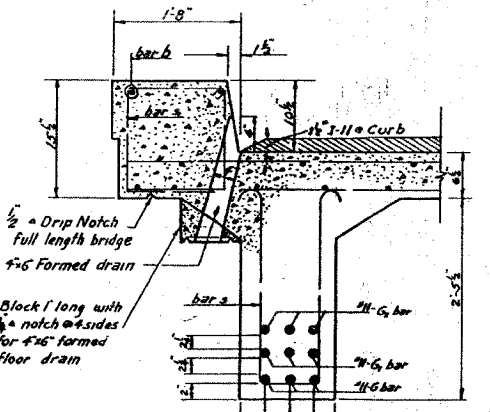
**AT ABUTMENT**

**CROSS SECTION**

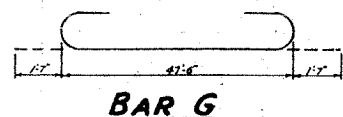


Reinf in Top of Slab

Reinf in Bottom of Slab

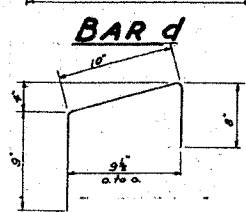


**GIRDER DETAIL**



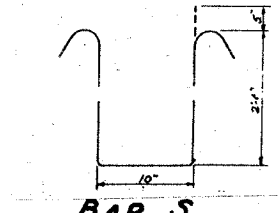
**BAR G**

**BAR S<sub>1</sub>**

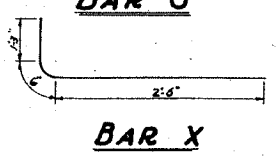


**BAR d**

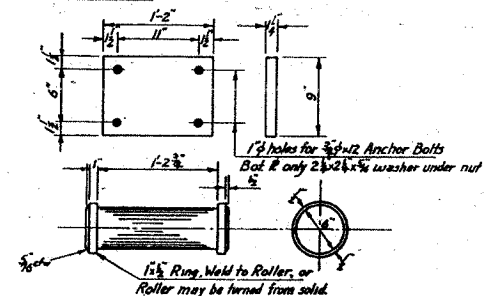
**BAR r**



**BAR S**



**BAR X**



**ROLLER & PLATES DETAIL**

**BILL OF MATERIAL**

Bars	No	Size	Length	Shape
a	130	5	10'-6"	—
a <sub>1</sub>	88	4	10'-6"	—
b	88	4	24'-6"	—
d	68	5	3'-0"	—
d <sub>1</sub>	36	4	2'-7"	—
G	12	11	50'-8"	c
G <sub>1</sub>	12	11	33'-9"	—
G <sub>2</sub>	12	11	25'-9"	—
r	32	4	2'-3"	—
e	18	5	23'-6"	—
x	48	4	4'-5"	—
s	136	4	4'-9"	—
s <sub>1</sub>	96	4	5'-5"	—

Class "X" Concrete	cu yds.	48.7
Handrail Concrete	cu yds.	2.5
Reinforcement Bars	lbs	12420
Masonry Removal	cu yds.	16.0
Expansion Bolts	each	8
Name Plate	each	One
Structural Steel	lbs	1620

DESIGNED *Edward M. Fenn*  
 CHECKED *Joseph J. Pender*  
 DRAWN *EMF* R. Rash  
 CHECKED *EMF*

EXAMINED *V.M. Romine*  
 PASSED *E. B. ...*  
 APPROVED *R.H. ...*

MAR 4 1955 PLAN

**SECTION AA**

**SECTION BB**

**SUPERSTRUCTURE**  
**SBI RT 86 SEC 105 BY**  
**WHITESIDE COUNTY**  
**STA 229 + 82**