

| | | | | |
|------------|---------|--------|--------------------|----|
| ROUTE NO. | SECTION | COUNTY | TOTAL SHEETS | SI |
| F.A.P. 697 | 17BR-1 | FORD | 42 | |
| ILLINOIS | | | CONTRACT NO. 66363 | |

STAGING NOTES

1. PRIOR TO STAGE I, REMOVE BITUMINOUS SHOULDER LT. STA. 991+86 TO LT. STA. 993+31.20 AND LT. STA. 994+17.20 TO LT. STA. 996+03.
2. CONSTRUCT TEMPORARY BITUMINOUS BASE COURSE TO THE NORTH.
3. WIDENING SHALL PROVIDE FOR A MINIMUM 15' TRAFFIC LANE.
4. PRIOR TO STAGE I CONSTRUCT TEMPORARY BITUMINOUS BASE COURSE FROM RT. STA. 995+55± TO RT. STA. 997+16±.

STAGE I

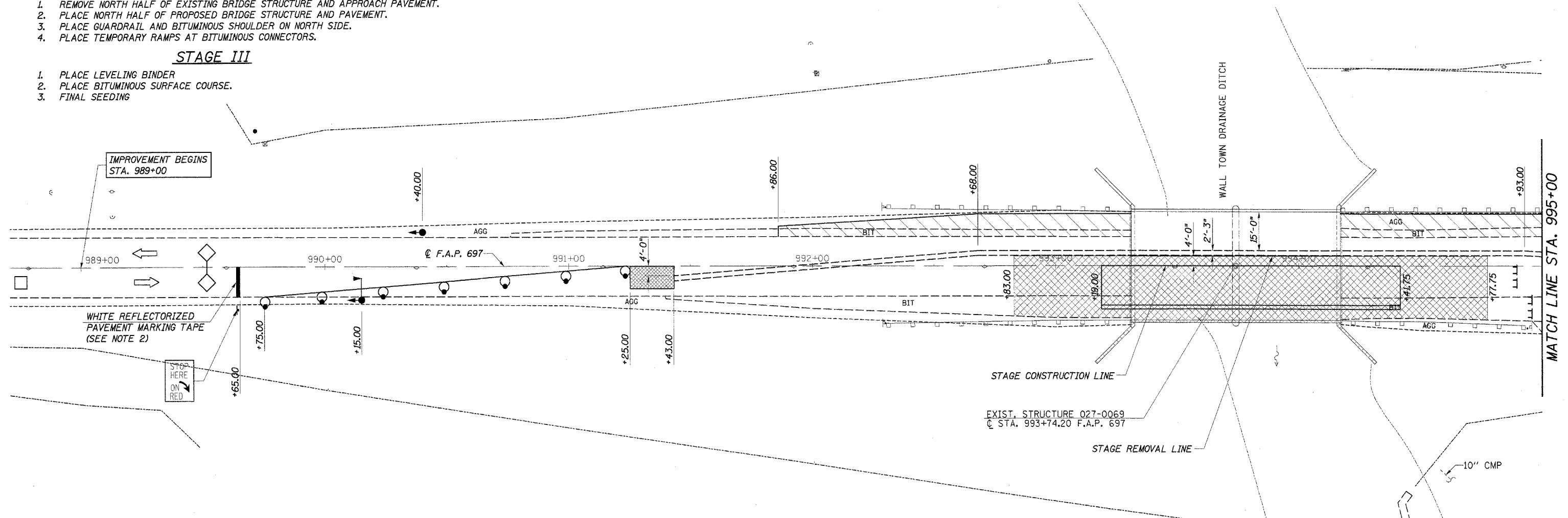
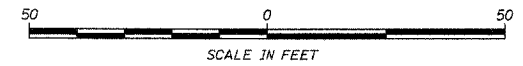
1. REMOVE SOUTH HALF OF EXISTING BRIDGE STRUCTURE AND APPROACH PAVEMENT
2. PLACE SOUTH HALF OF PROPOSED BRIDGE STRUCTURE AND PAVEMENT.
3. PLACE GUARDRAIL AND BITUMINOUS SHOULDERS ON SOUTH SIDE.
4. PLACE TEMPORARY RAMPS AT BITUMINOUS CONNECTORS.

STAGE II

1. REMOVE NORTH HALF OF EXISTING BRIDGE STRUCTURE AND APPROACH PAVEMENT.
2. PLACE NORTH HALF OF PROPOSED BRIDGE STRUCTURE AND PAVEMENT.
3. PLACE GUARDRAIL AND BITUMINOUS SHOULDER ON NORTH SIDE.
4. PLACE TEMPORARY RAMPS AT BITUMINOUS CONNECTORS.

STAGE III

1. PLACE LEVELING BINDER
2. PLACE BITUMINOUS SURFACE COURSE.
3. FINAL SEEDING



IMPROVEMENT BEGINS STA. 989+00

WHITE REFLECTORIZED PAVEMENT MARKING TAPE (SEE NOTE 2)

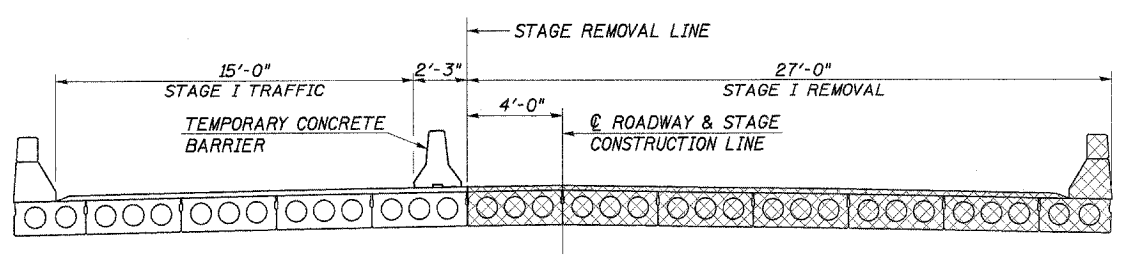
STOP HERE ON RED

EXIST. STRUCTURE 027-0069
C STA. 993+74.20 F.A.P. 697

STAGE REMOVAL LINE

STAGE CONSTRUCTION LINE

10" CMP



STAGE I TYPICAL SECTION
(LOOKING EAST)

LEGEND

- DRUM WITH STEADY BURNING MONODIRECTIONAL LIGHT
- ARROW BOARD
- TEMPORARY CONCRETE BARRIER
- IMPACT ATTENUATOR, TEMPORARY (NON-REDIRECTIVE), TEST LEVEL 3
- TYPE C MONODIRECTIONAL REFLECTOR
- DIRECTION OF TRAFFIC
- SIGN
- TYPE III BARRICADE
- STAGE REMOVAL
- TEMPORARY BITUMINOUS BASE COURSE
- TRAFFIC SIGNAL
- DETECTOR LOOPS
- MICROWAVE ON ARM

NOTES

1. THE PLACEMENT OF TEMPORARY CONCRETE BARRIERS, IMPACT ATTENUATORS, TEMPORARY SIGNALS AND STOP LINES ARE AS SHOWN. PLACE REMAINING TRAFFIC CONTROL ITEMS PER STANDARD 701321.
2. PAVEMENT MARKING TAPE, TYPE III, 24" SHALL BE 6 STRIPS OF PAVEMENT MARKING TAPE, TYPE III, 4", COST INCIDENTAL TO TRAFFIC CONTROL.
3. ALL CONFLICTING PAVEMENT MARKINGS SHALL BE REMOVED. (PAID FOR AS PAVEMENT MARKING REMOVAL)

MAINTENANCE OF TRAFFIC
STAGE I
FAP 697 (IL. RTE. 9) OVER
WALL TOWN DRAINAGE DITCH
SECTION 17BR-1
FORD COUNTY
S.N. 027-0094

4440 ASH GROVE
SPRINGFIELD, IL 62707
(217) 793-8600
casino@famvid.com

OZYURT AND STONE, INC.
CONSULTING ENGINEERS

JOB NO.: 0306.2
FILE: STI-02.D
DATE: 08-17-0