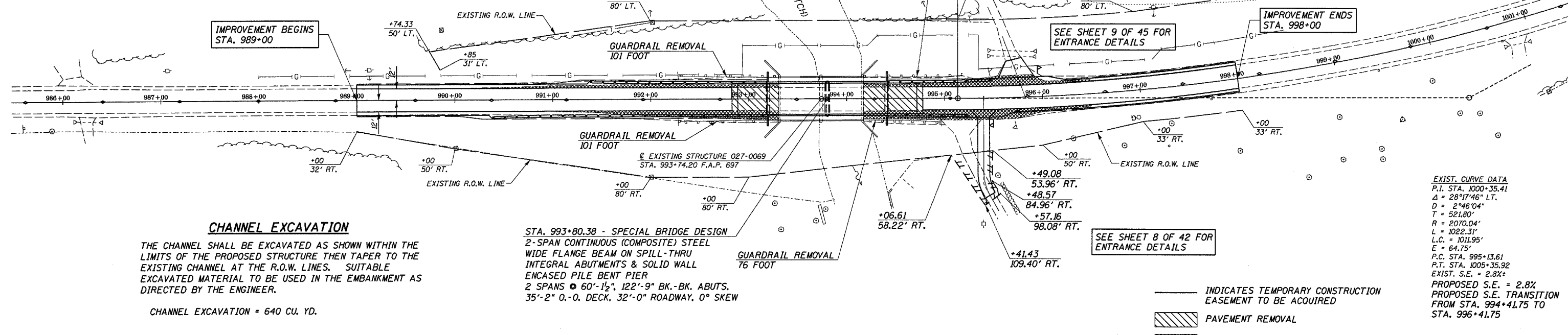
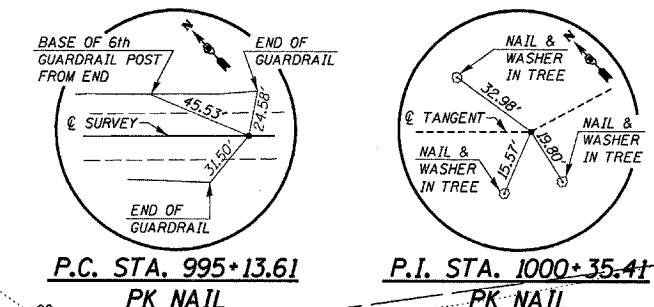
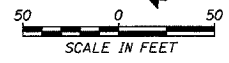
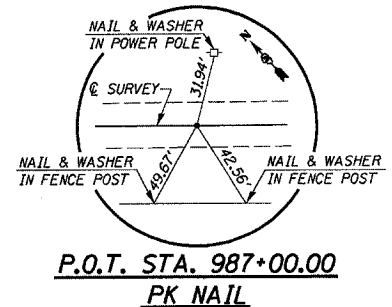


ROUTE	SECTION	COUNTY	TOTAL SHEETS
F.A.P. 697	17BR-1	FORD	42
STA. 986+00	TO STA. 1001+00		
ILLINOIS			CONTRACT NO. 66363



CHANNEL EXCAVATION

THE CHANNEL SHALL BE EXCAVATED AS SHOWN WITHIN THE LIMITS OF THE PROPOSED STRUCTURE THEN TAPER TO THE EXISTING CHANNEL AT THE R.O.W. LINES. SUITABLE EXCAVATED MATERIAL TO BE USED IN THE EMBANKMENT AS DIRECTED BY THE ENGINEER.

CHANNEL EXCAVATION = 640 CU. YD.

STA. 993+80.38 - SPECIAL BRIDGE DESIGN
 2-SPAN CONTINUOUS (COMPOSITE) STEEL WIDE FLANGE BEAM ON SPILL-THRU INTEGRAL ABUTMENTS & SOLID WALL ENCASED PILE BENT PIER
 2 SPANS @ 60'-1 1/2", 122'-9" BK.-BK. ABUTS.
 35'-2" O.-O. DECK, 32'-0" ROADWAY, 0° SKEW

EXIST. CURVE DATA
 P.I. STA. 1000+35.41
 Δ = 28°17'46" LT.
 D = 2°46'04"
 T = 521.80'
 R = 2070.04'
 L = 1022.31'
 L.C. = 1011.95'
 E = 64.75'
 P.C. STA. 995+13.61
 P.T. STA. 1005+35.92
 EXIST. S.E. = 2.8%
 PROPOSED S.E. = 2.8%
 PROPOSED S.E. TRANSITION FROM STA. 994+41.75 TO STA. 996+41.75

B.M. #100 CHISELED "X" ON TOP OF NW. WING S.W. 027-0069 23' LT. STA. 993+52 ELEV. 747.55		B.M. #101 R.R. SPIKE IN EAST SIDE OF POWER POLE 81' LT. STA. 994+85 ELEV. 749.33	
765			
760			
755			
750			
745			
740			
735			
730			
725			
746.25	747.96	747.73	747.52
747.42	747.32	747.45	747.58
747.60	747.72	747.74	747.86
747.88	747.86	748.02	747.87
748.16	748.01	748.30	748.14
748.44	748.15	748.58	748.16
748.72	748.16	748.72	748.18
748.81	748.20	748.81	748.20
748.80	748.22	748.70	748.23
748.51	748.13	748.28	747.90
748.05	747.76	747.82	747.54
747.59	747.35	747.36	747.13
747.13	746.96	746.74	746.57
746.32	746.03	745.78	
986+00	987+00	988+00	989+00
990+00	991+00	992+00	993+00
994+00	995+00	996+00	997+00
998+00	999+00	1000+00	1001+00