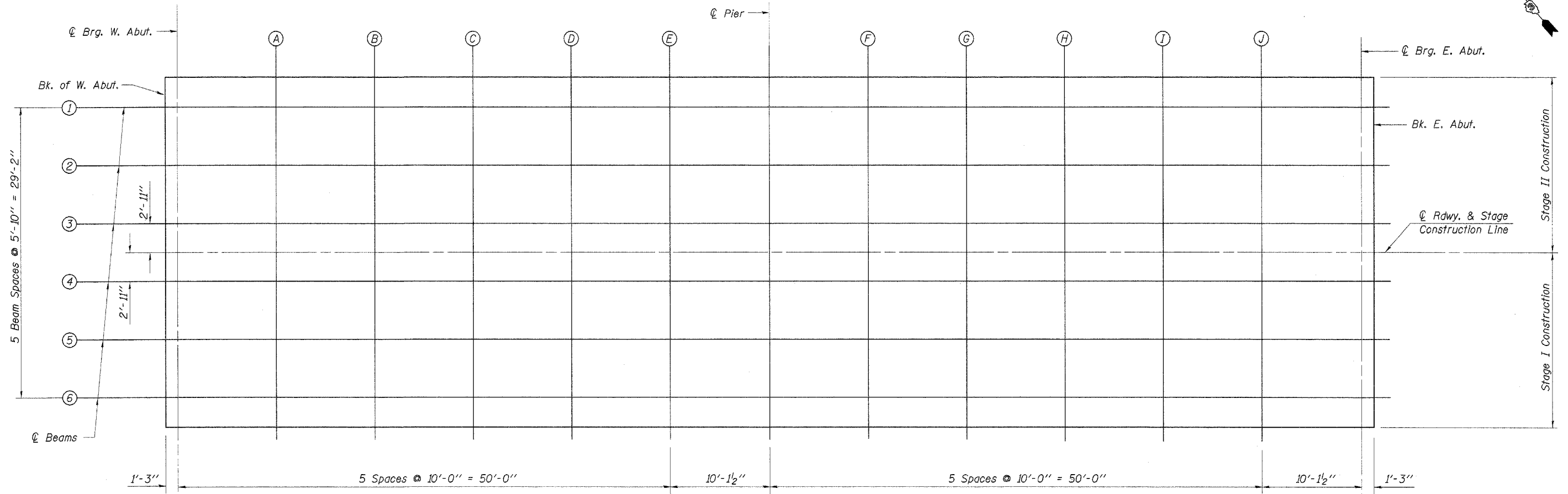
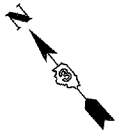
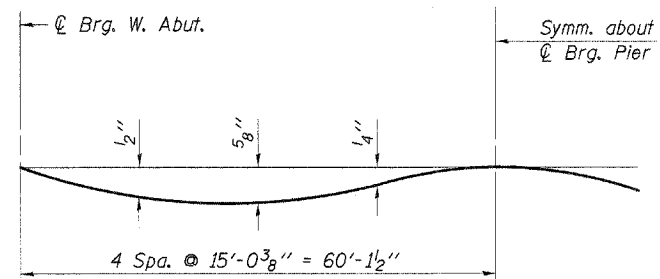


ROUTE NO.	SECTION	COUNTY	TOTAL SHEETS	SHEET NO.
FAP 697	17BR-1	FORD	42	23

ILLINOIS  
CONTRACT NO. 66363  
Sheet 5 of 20



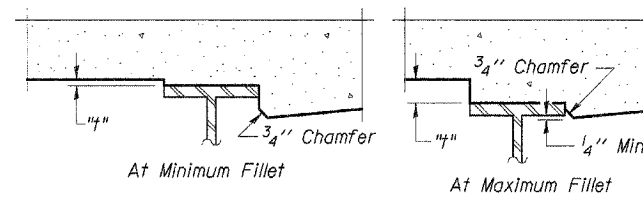
**PLAN**



**DEAD LOAD DEFLECTION DIAGRAM**

(Includes weight of concrete only.)

Note: The above deflections are not to be used in the field if the engineer is working from the grade elevations adjusted for dead load deflections as shown on Sheet 6 of 20.



To determine "t": After all structural steel has been erected, elevations of the top flanges of the beams shall be taken at intervals shown below. These elevations subtracted from the "Theoretical Grade Elevations Adjusted for Dead Load Deflection" shown on Sheet 6 of 20, minus slab thickness, equals the fillet heights "t" above top flange of beams.

**FILLET HEIGHTS**

DESIGNED	P.S.L.
CHECKED	A.R.K. & F.J.S.
DRAWN	K.T.R.
CHECKED	P.S.L. & A.R.K.

**TOP OF SLAB ELEVATIONS**  
 IL. RTE. 9 OVER WALL TOWN DRAINAGE DITCH  
 FAP ROUTE 697 - SECTION 17BR-1  
 FORD COUNTY  
 STATION 993+80.38  
 S.N. 027-0094

4440 ASH GROVE SPRINGFIELD, IL. 62707 (217) 793-8600 oasinc@tamvid.com	<b>OZYURT AND STONE, INC.</b> CONSULTING ENGINEERS	JOB NO.: 0306.2 FILE: SLABELOAD DATE: 06-08-04
---	---	--