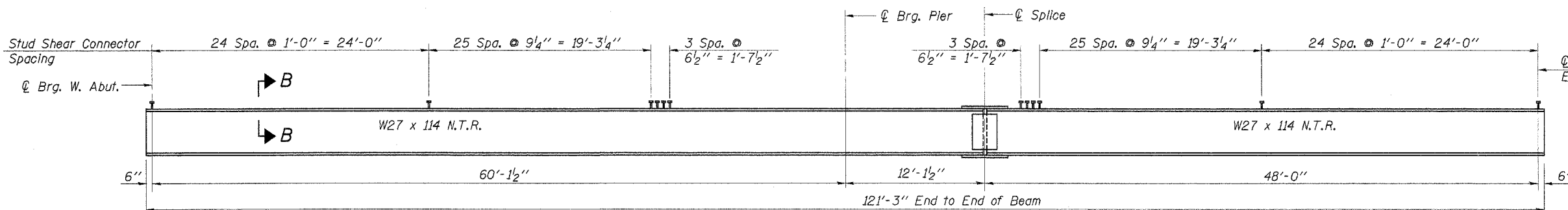


**FRAMING PLAN**

**TOP OF BEAM ELEVATIONS**  
(For Fabrication Only)

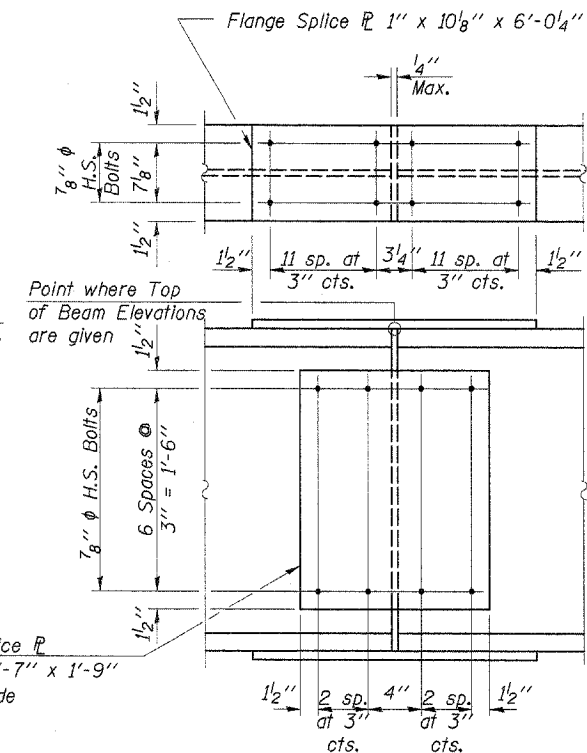
	℄ Brg. W. Abut.	℄ Brg. Pier	℄ Splice	℄ Brg. E. Abut.
Beams 1 & 6	747.78	747.81	747.82	747.74
Beams 2 & 5	747.88	747.91	747.92	747.84
Beams 3 & 4	747.97	748.00	748.01	747.93

See End of Beam Detail  
Sheet 11 of 20.



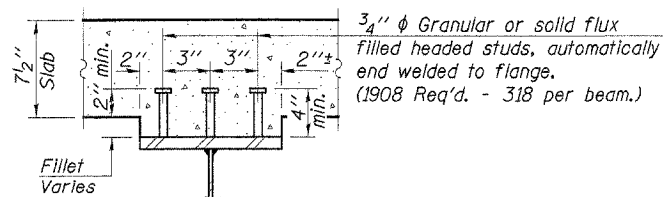
**BEAM ELEVATION**

Note: N.T.R. indicates that Notch Toughness Requirements are applicable.



**DETAIL OF SPLICE**  
N.T.R.

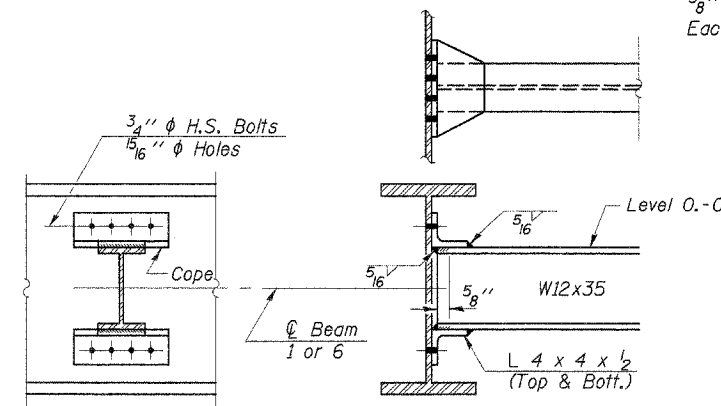
Note: See sheet 12 of 20 for anchor bolt installation. Anchor bolts at bearings may be built into the masonry.



**SECTION B-B**

Typical Shear Connector Detail

1/2" Vertical x 1 3/16" slotted holes in top and bottom connection angles at the south side of beam 3 only, except at the pier. Provide 5/16" ℄ washers for the slotted holes. The bolts for the slotted holes in angles at beam 3 shall only be finger tightened prior to the deck slab pouring of Stage II Construction then fully tightened after completion of Stage II pour.



**DIAPHRAGM D**

25 Required

Note: Two hardened washers shall be required over all oversize holes for diaphragms.

DESIGNED	P.S.L.
CHECKED	A.R.K. & F.J.S.
DRAWN	K.T.R.
CHECKED	P.S.L. & A.R.K.

**STRUCTURAL STEEL**

IL. RTE. 9 OVER WALL TOWN DRAINAGE DITCH  
FAP ROUTE 697 - SECTION 17BR-1  
FORD COUNTY  
STATION 993+80.38  
S.N. 027-0094

4440 ASH GROVE  
SPRINGFIELD, IL. 62707  
(217) 793-8600  
oasinc@tamvid.com

**OZYURT AND STONE, INC.**  
CONSULTING ENGINEERS

JOB NO.: 0306.2  
FILE: STEEL01.DGN  
DATE: 06-08-04