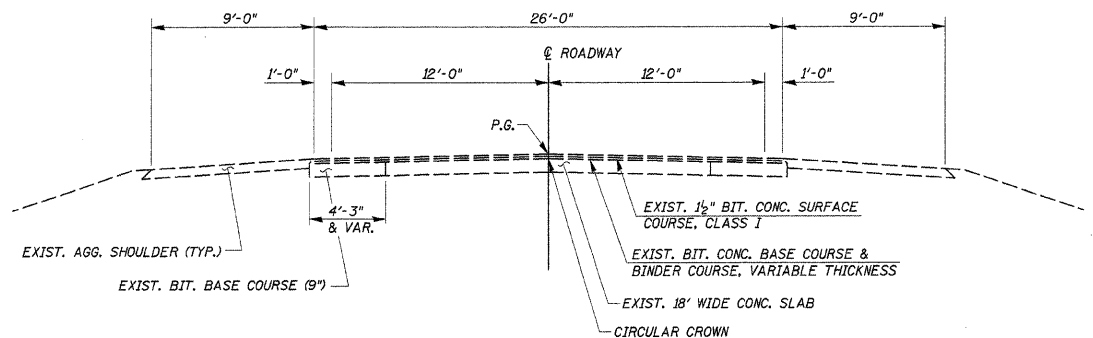
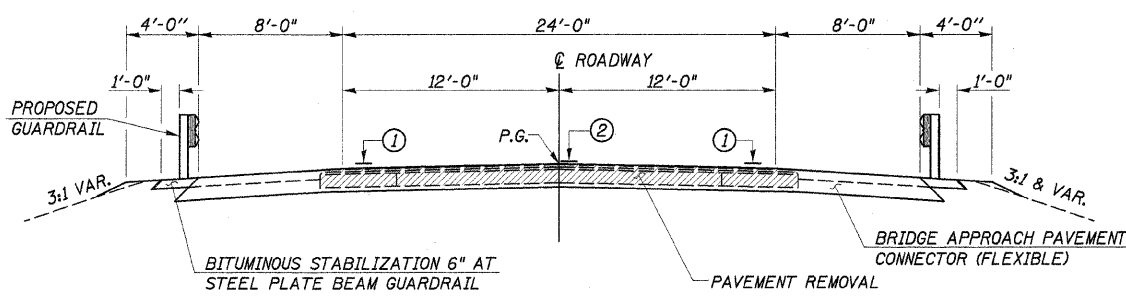


ROUTE NO.	SECTION	COUNTY	TOTAL SHEETS	SHEET NO.
FAP 330	16BR	KANKAKEE	37	4

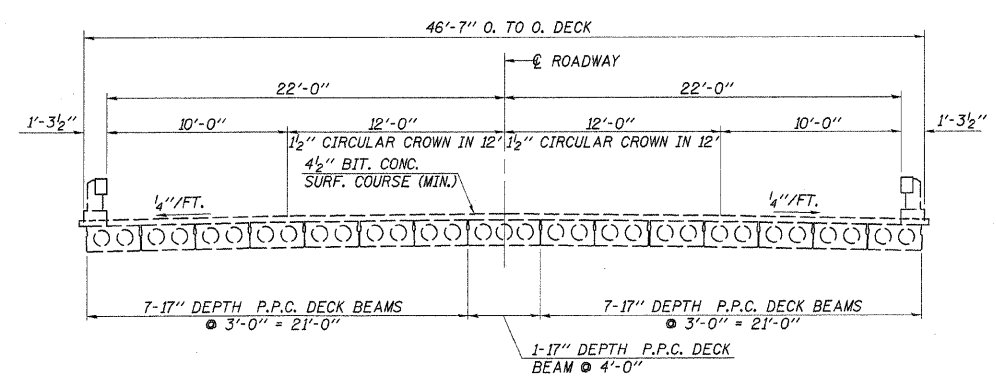
ILLINOIS CONTRACT NO. 66365



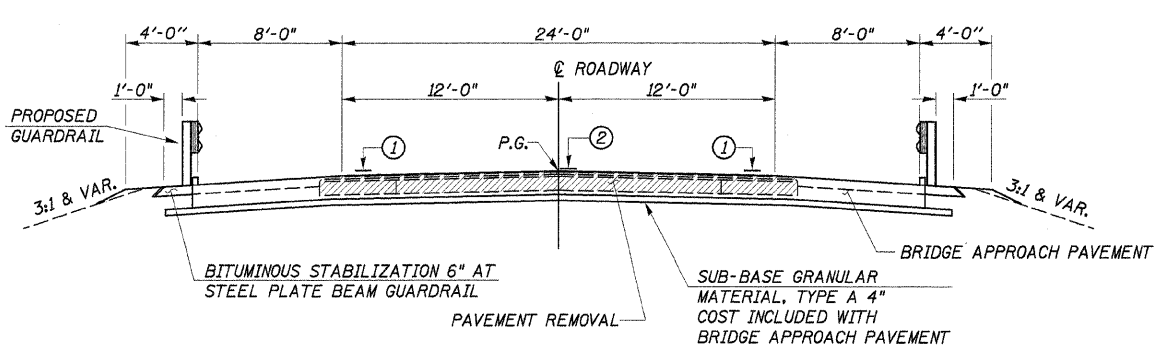
**EXISTING TYPICAL SECTION**



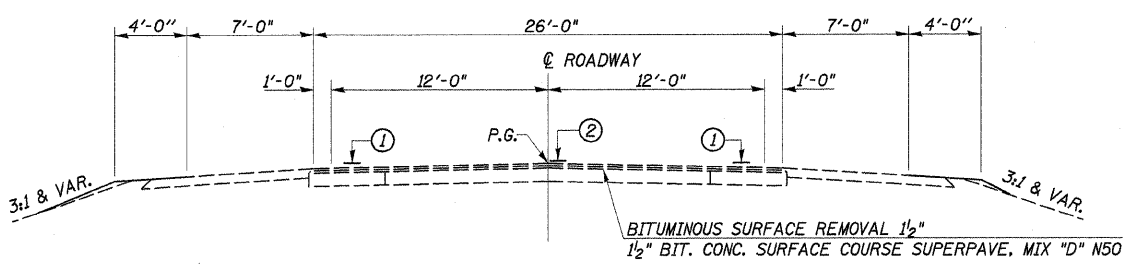
**PROPOSED TYPICAL SECTION**



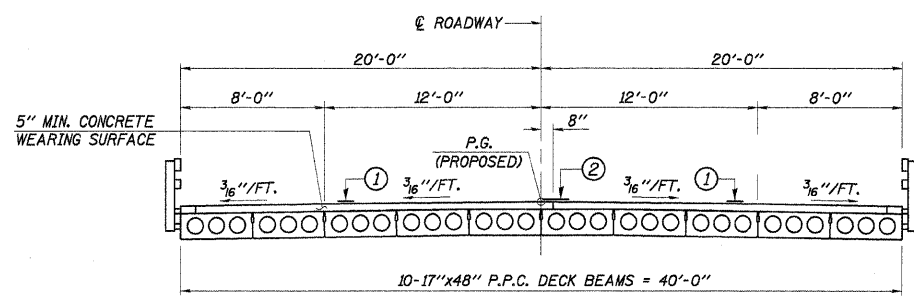
**EXISTING CROSS SECTION**



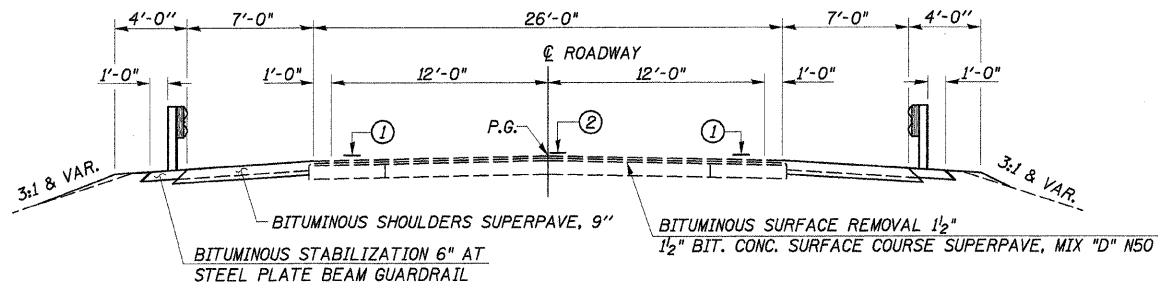
**PROPOSED TYPICAL SECTION**



**PROPOSED TYPICAL SECTION**



**PROPOSED TYPICAL CROSS SECTION**



**PROPOSED TYPICAL SECTION**

RT. STA. 353+28.66 TO STA. 355+23.73  
 LT. STA. 354+08.80 TO STA. 355+23.73  
 RT. STA. 357+11.27 TO STA. 358+55  
 LT. STA. 357+11.27 TO STA. 358+59

- ① EDGE LINE (4" SOLID WHITE)
- ② CENTER LINE (6" SKIP-DASH YELLOW)

**TYPICAL SECTIONS**  
 FAP ROUTE 330 (U.S. RTE. 45/52)  
 OVER SOUTH BRANCH ROCK CREEK  
 SECTION 16BR  
 KANKAKEE COUNTY  
 S.N. 046-0047

4440 ASH GROVE SPRINGFIELD, ILL. 62711 (217) 793-8600 oasinc@famvid.com	<b>OZYURT AND STONE, INC.</b> CONSULTING ENGINEERS	JOB NO.: 0306.3 FILE: TYPOLDGN DATE: 09-07-04
--	---	---