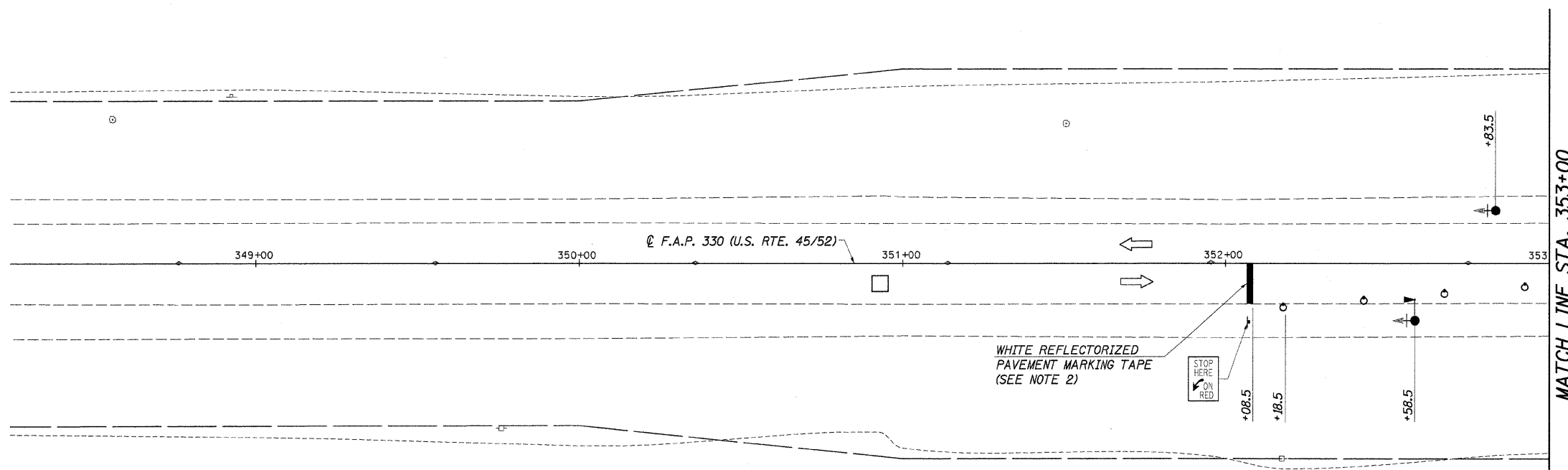
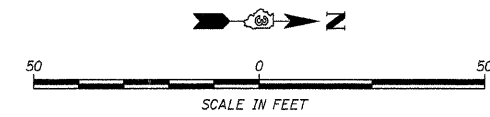


ROUTE NO.	SECTION	COUNTY	TOTAL SHEETS	SHEET NO.
FAP 330	16BR	KANKAKEE	37	7
ILLINOIS				

CONTRACT NO. 66365



STAGING NOTES

1. PRIOR TO STAGE I, CONSTRUCT TEMPORARY BITUMINOUS BASE COURSE TO THE WEST.
2. WIDENING SHALL PROVIDE FOR A MINIMUM 15.5' TRAFFIC LANE.

STAGE I

1. REMOVE EAST HALF OF EXISTING BRIDGE STRUCTURE AND APPROACH PAVEMENT
2. PLACE EAST HALF OF PROPOSED BRIDGE STRUCTURE AND PAVEMENT.
3. PLACE EAST GUARDRAIL AND BITUMINOUS SHOULDERS ON EAST SIDE.

STAGE II

1. REMOVE WEST HALF OF EXISTING BRIDGE STRUCTURE AND APPROACH PAVEMENT.
2. PLACE WEST HALF OF PROPOSED BRIDGE STRUCTURE AND PAVEMENT.
3. PLACE GUARDRAIL AND BITUMINOUS SHOULDER ON WEST SIDE.

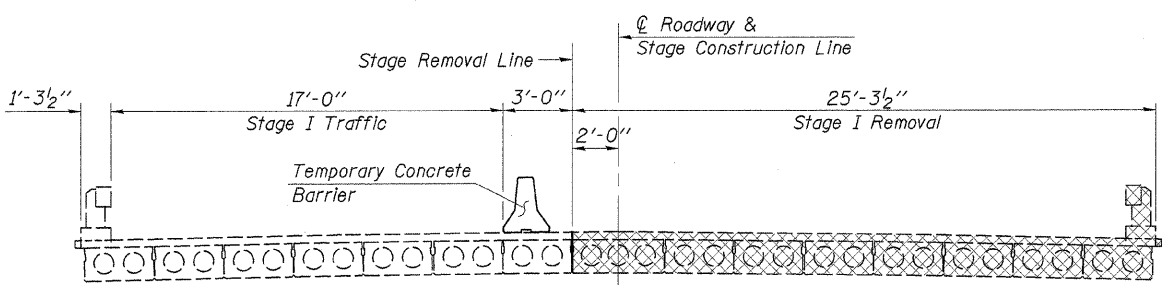
STAGE III

1. MILLING AND RESURFACING
2. FINAL SEEDING

LEGEND	
	DRUM WITH STEADY BURNING MONODIRECTIONAL LIGHT
	ARROW BOARD
	TEMPORARY CONCRETE BARRIER
	IMPACT ATTENUATOR, TEMPORARY (NON-REDIRECTIVE), TEST LEVEL 3
	TYPE C MONODIRECTIONAL REFLECTOR
	DIRECTION OF TRAFFIC
	SIGN
	TYPE III BARRICADE
	STAGE REMOVAL
	TEMPORARY BITUMINOUS BASE COURSE
	TRAFFIC SIGNAL WITH BACKPLATE
	DETECTOR LOOPS
	AGGREGATE SHOULDER
	MICROWAVE ON ARM

NOTES

1. THE PLACEMENT OF TEMPORARY CONCRETE BARRIERS, IMPACT ATTENUATORS, TEMPORARY SIGNALS AND STOP LINES ARE AS SHOWN. PLACE REMAINING TRAFFIC CONTROL ITEMS PER STANDARD 701321.
2. PAVEMENT MARKING TAPE, TYPE III, 24" SHALL BE 6 STRIPS OF PAVEMENT MARKING TAPE, TYPE III, 4", COST INCIDENTAL TO TRAFFIC CONTROL
3. ALL CONFLICTING PAVEMENT MARKINGS SHALL BE REMOVED. (PAID FOR AS PAVEMENT MARKING REMOVAL)



STAGE I
(Looking North)

**MAINTENANCE OF TRAFFIC
STAGE I
FAP ROUTE 330 (U.S. RTE. 45/52)
OVER SOUTH BRANCH ROCK CREEK
SECTION 16BR
KANKAKEE COUNTY
S.N. 046-0047**

4440 ASH GROVE SPRINGFIELD, IL 62711 (217) 793-8600 oasinc@famvid.com	OZYURT AND STONE, INC. CONSULTING ENGINEERS	JOB NO.: 0306.3 FILE: STAGE1A.DGN DATE: 09-07-04
--------------------------------------------------------------------------------	-------------------------------------------------------	--------------------------------------------------------