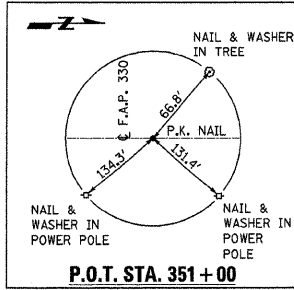
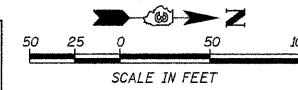
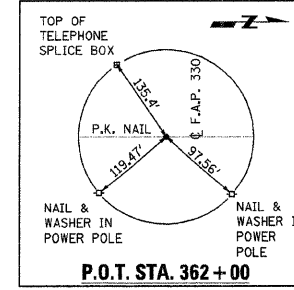


**CENTERLINE TIE**



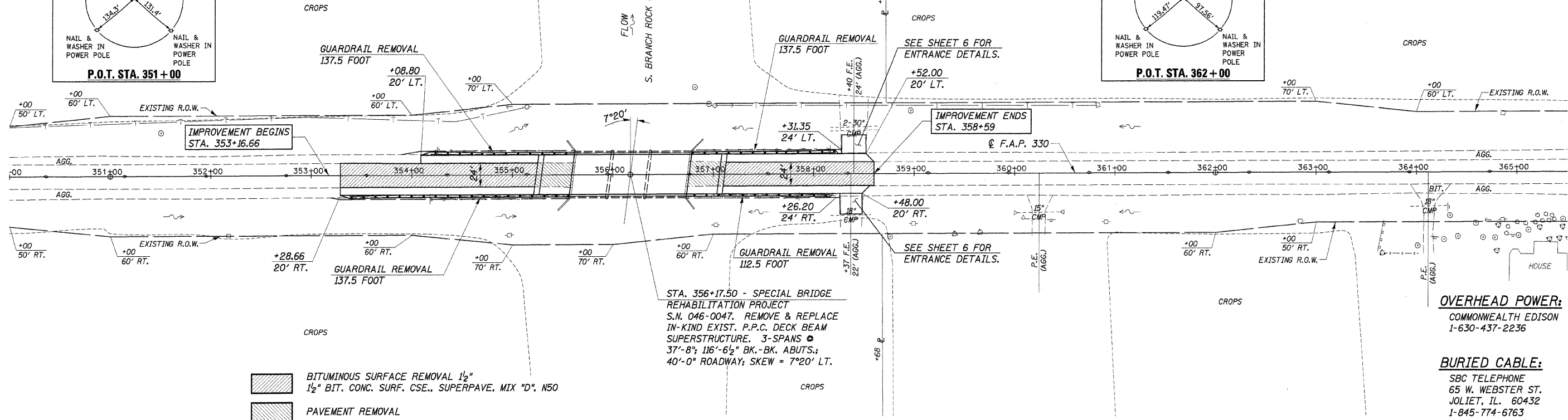
SEC. 30, T. 32 N., R. 12 E., 3RD P.M.

**CENTERLINE TIE**



ROUTE	SECTION	COUNTY	TOTAL SHEETS	SHEET NO.
FAP 330	15BR	KANKAKEE	38	13
STA. 350+00		TO STA. 365+00		
ILLINOIS				
CONTRACT NO. 16365				

PLAN  
 SURVEYED  
 PLOTTED  
 CHECKED  
 RT. OF WAY CHECKED  
 NOTE BOOK NO.  
 CAD FILE NAME



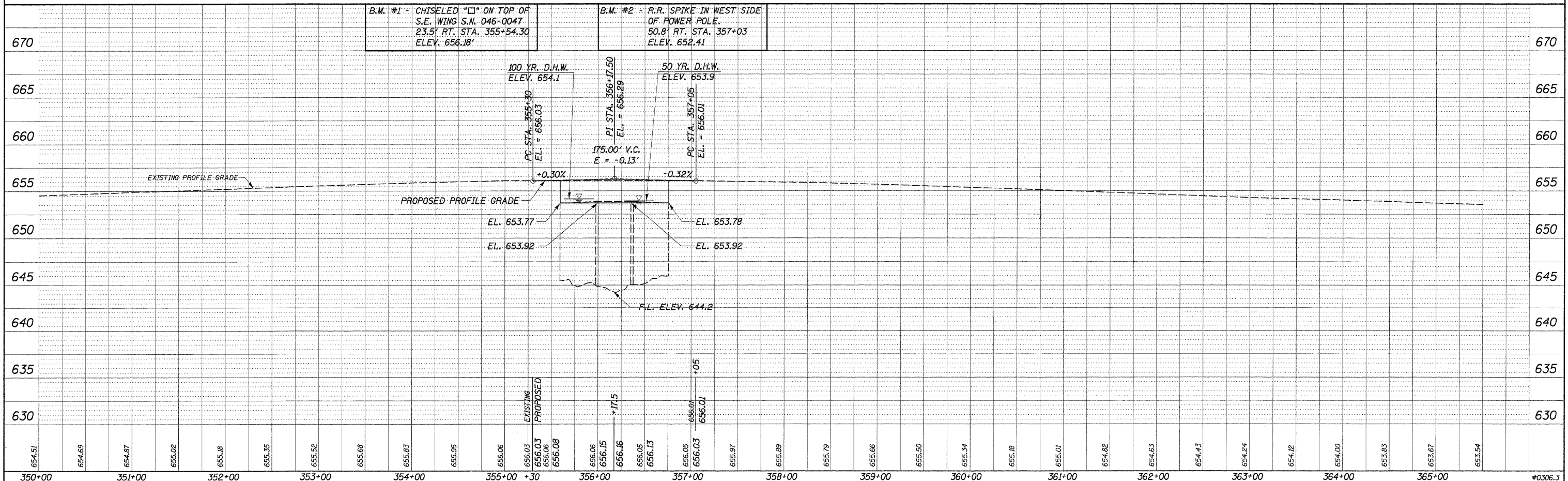
BITUMINOUS SURFACE REMOVAL 1 1/2"  
 1 1/2" BIT. CONC. SURF. CSE., SUPERPAVE, MIX "D", N50  
 PAVEMENT REMOVAL

**OVERHEAD POWER:**  
 COMMONWEALTH EDISON  
 1-630-437-2236

**BURIED CABLE:**  
 SBC TELEPHONE  
 65 W. WEBSTER ST.  
 JOLIET, IL. 60432  
 1-845-774-6763

SEC. 29, T. 32 N., R. 12 E., 3RD P.M.

PROFILE  
 SURVEYED  
 PLOTTED  
 CHECKED  
 B.M. INT'D  
 STRUCTURE METARY'S CRKD  
 NOTE BOOK NO.



654.51	654.69	654.87	655.02	655.18	655.35	655.52	655.68	655.83	655.95	656.06	656.03	656.06	656.08	656.06	656.15	656.16	656.05	656.03	655.97	655.89	655.79	655.66	655.50	655.34	655.18	655.01	654.82	654.63	654.43	654.24	654.12	654.00	653.83	653.67	653.54	#0306.3			
350+00	351+00	352+00	353+00	354+00	355+00	355+30	356+00	357+00	358+00	359+00	360+00	361+00	362+00	363+00	364+00	365+00																							