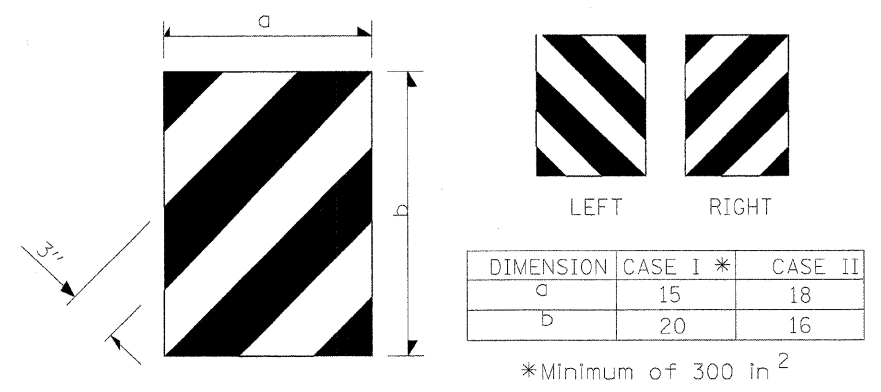


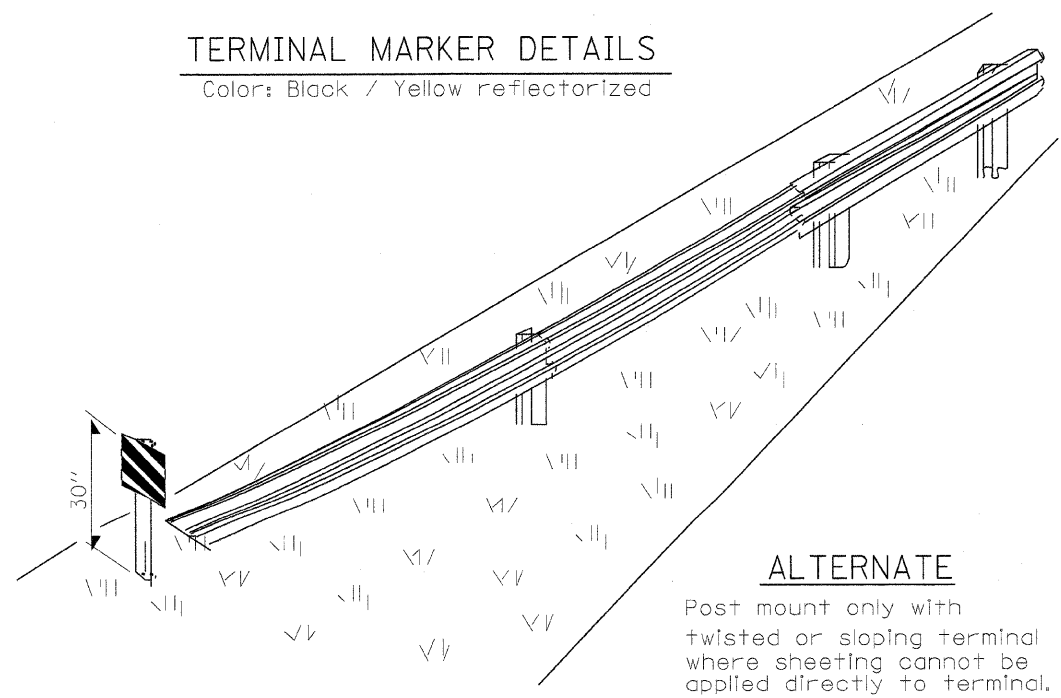
CASE I

CASE II



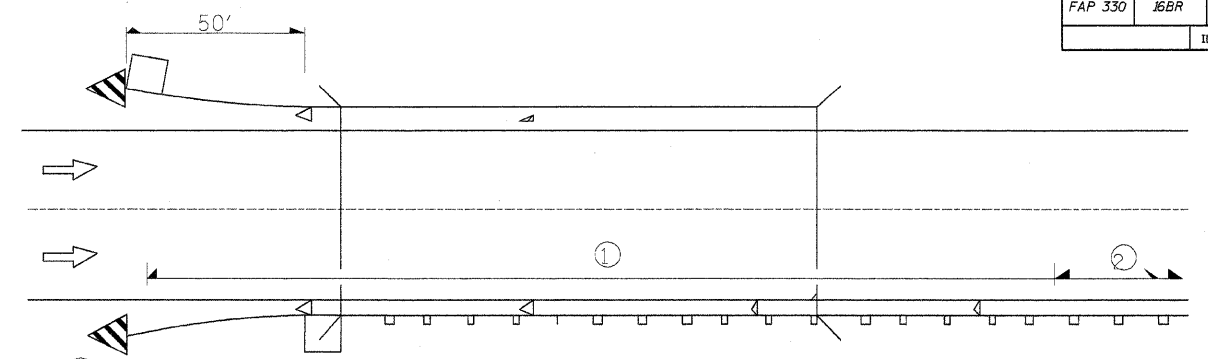
**TERMINAL MARKER DETAILS**

Color: Black / Yellow reflectorized



**ALTERNATE**

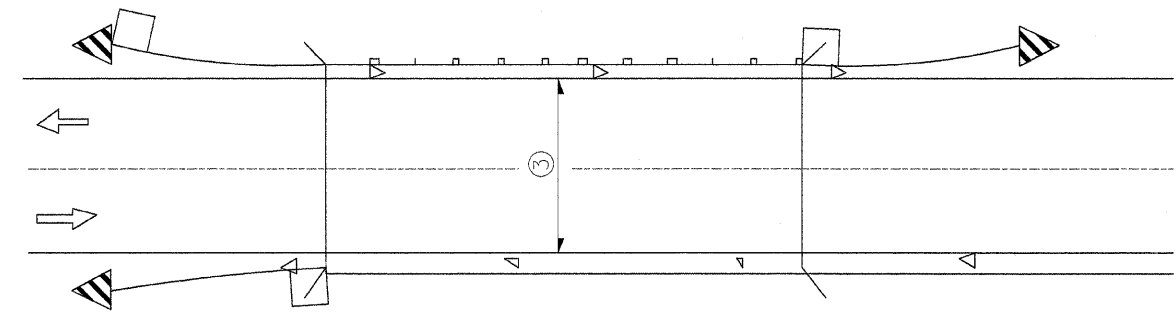
Post mount only with twisted or sloping terminal where sheeting cannot be applied directly to terminal.



① Spacing 80 ft max. for first 400 ft or curve spacing shown in Standard 635001, whichever is less (min. 4 reflectors regardless of length).

② After 400 ft, transition to normal delineator spacing shown in Standard 635001, and continue as required.

ONE-WAY TRAFFIC

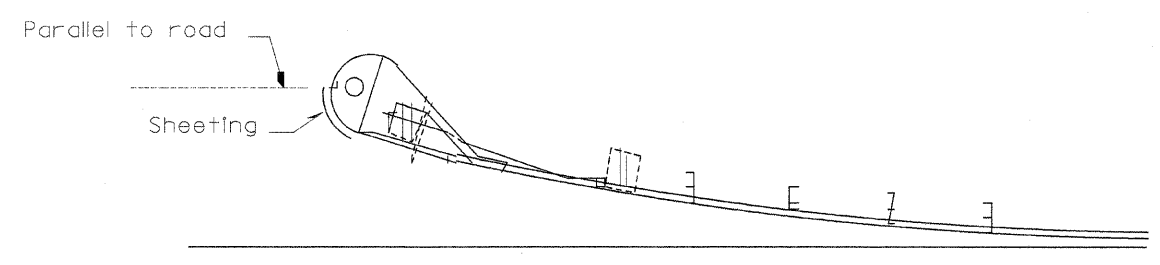


③ Bidirectional silver/silver should be used in lieu of monodirectional silver on both sides of two-lane bridges where the pavement is less than 24" wider than the pavement approaching the bridge.

- ◁ Monodirectional silver
- ▷ Monodirectional amber
- ▤ Terminal Marker - Black/Yellow Left or Right as appropriate

TWO-WAY TRAFFIC

**GUARDRAIL / BARRIER WALL / BRIDGE RAIL REFLECTIORS**



SHEETING POSITION: CASE II

**REFLECTOR AND TERMINAL MARKER PLACEMENT**

635-1

**MISCELLANEOUS DETAILS**

FAP ROUTE 330 (U.S. RTE. 45/52)  
OVER SOUTH BRANCH ROCK CREEK  
SECTION 16BR  
KANKAKEE COUNTY  
S.N. 046-0047

4440 ASH GROVE  
SPRINGFIELD, IL. 62711  
(217) 793-8600  
oasinc@famvid.com

**OZYURT AND STONE, INC.**  
CONSULTING ENGINEERS

JOB NO.: 0306.3  
FILE: DET04.DGN  
DATE: 09-07-04