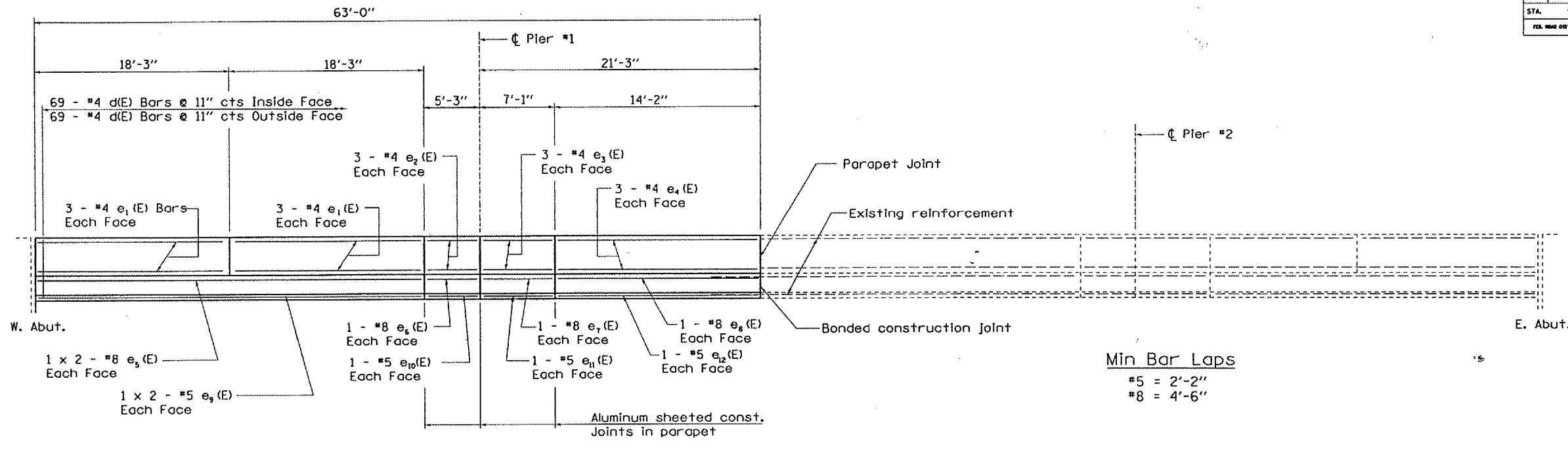
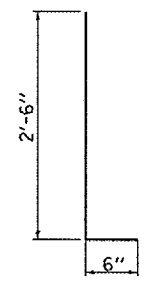


F.A.I. RTE.	SECTION	COUNTY	TOTAL SHEETS	SHEET NO.
80	(32-2B)I	GRUNDY	8	7
STA.	1067+47	TO STA.	1068+89	
FED. ROAD DIST. NO.	ILLINOIS			

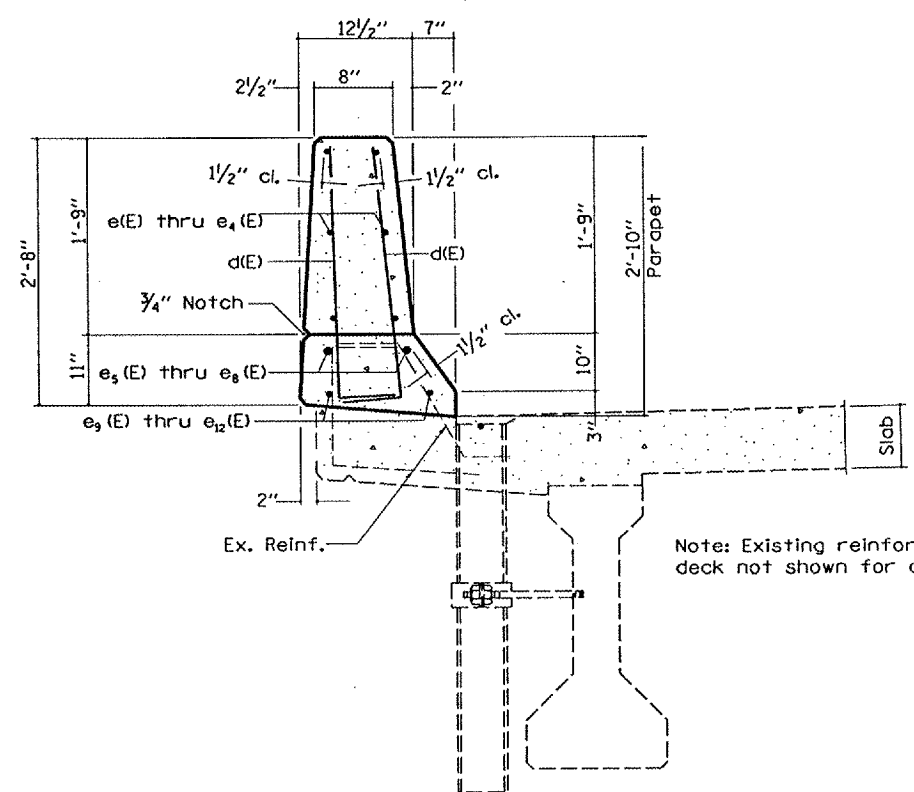


Min Bar Laps  
 #5 = 2'-2"  
 #8 = 4'-6"

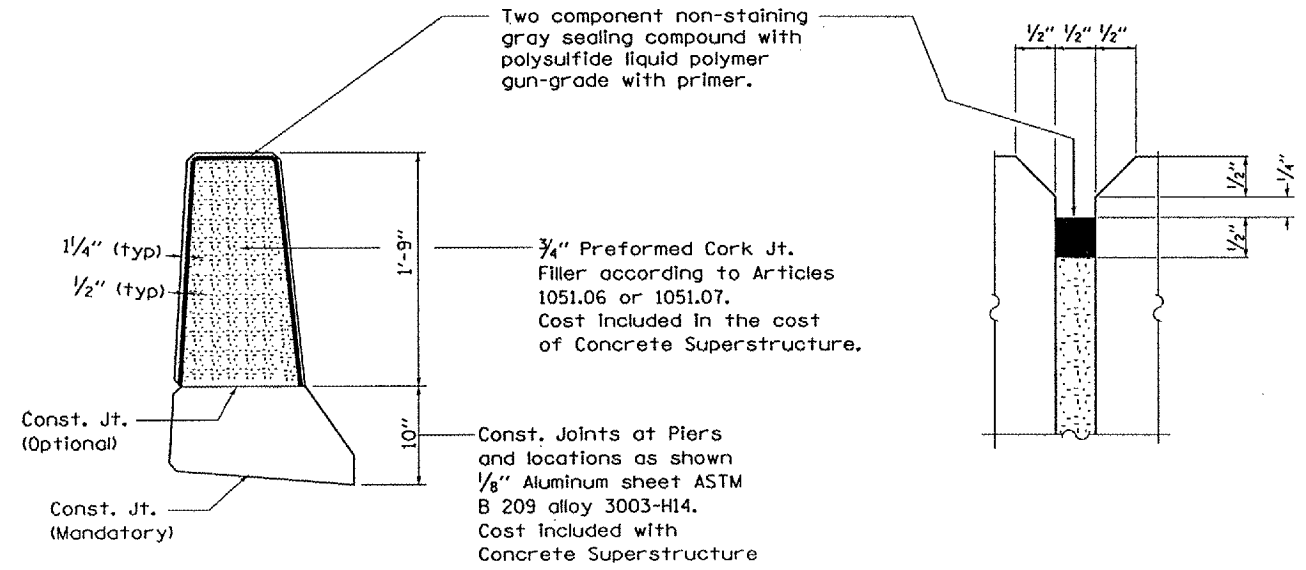


ELEVATION

BAR d(E)



SECTION



PARAPET JOINT DETAILS

SUPERSTRUCTURE BILL OF MATERIAL

Bar	No.	Size	Length	Shape
d(E)	138	#4	3'-0"	▬
e <sub>1</sub> (E)	12	#4	18'-0"	▬
e <sub>2</sub> (E)	6	#4	5'-0"	▬
e <sub>3</sub> (E)	6	#4	6'-10"	▬
e <sub>4</sub> (E)	6	#4	13'-11"	▬
e <sub>5</sub> (E)	4	#8	20'-4"	▬
e <sub>6</sub> (E)	2	#8	5'-0"	▬
e <sub>7</sub> (E)	2	#8	6'-10"	▬
e <sub>8</sub> (E)	2	#8	13'-11"	▬
e <sub>9</sub> (E)	4	#5	19'-1"	▬
e <sub>10</sub> (E)	2	#5	5'-0"	▬
e <sub>11</sub> (E)	2	#5	6'-10"	▬
e <sub>12</sub> (E)	2	#5	13'-11"	▬
Reinforcement Bars, Epoxy Coated			Pound	1,000
Concrete Superstructure			Cu. Yds.	6.6

Reinforcement bars designated (E) shall be epoxy coated.  
 Bars indicated thus 1 x 2 - #5 etc. indicates 1 line of bars with 2 lengths per line.

REVISIONS	
NAME	DATE

ILLINOIS DEPARTMENT OF TRANSPORTATION  
**PARAPET DETAILS**  
 FAI ROUTE 80 OVER NETTLE CREEK  
 FAI ROUTE 80 SECTION (32-2B)I  
 STA. 1068 + 30  
 GRUNDY COUNTY  
 SN 032-0009 (EB)

06/23/04 /mchd05/0320009/0320009.dgn