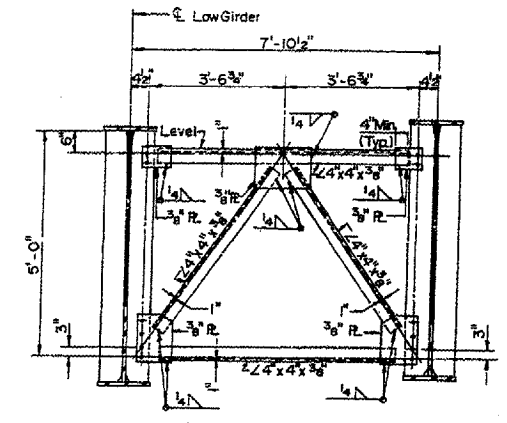
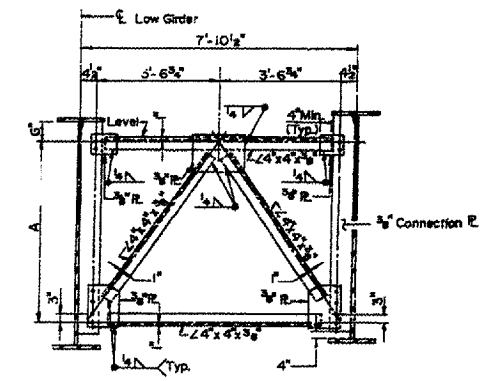


END CROSS FRAME - CF
No. Req'd. = 16



INTERIOR CROSS FRAME - CF1
No. Req'd. = 16

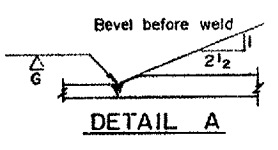


INTERIOR CROSS FRAME - CF2, CF3 & CF4
CF2 No. Req'd. = 40; CF3 No. Req'd. = 16
CF4 No. Req'd. = 16
CF2 shown. CF3 & CF4 similar except the connecting plate shall be welded to the bottom flange and undercut at the top.

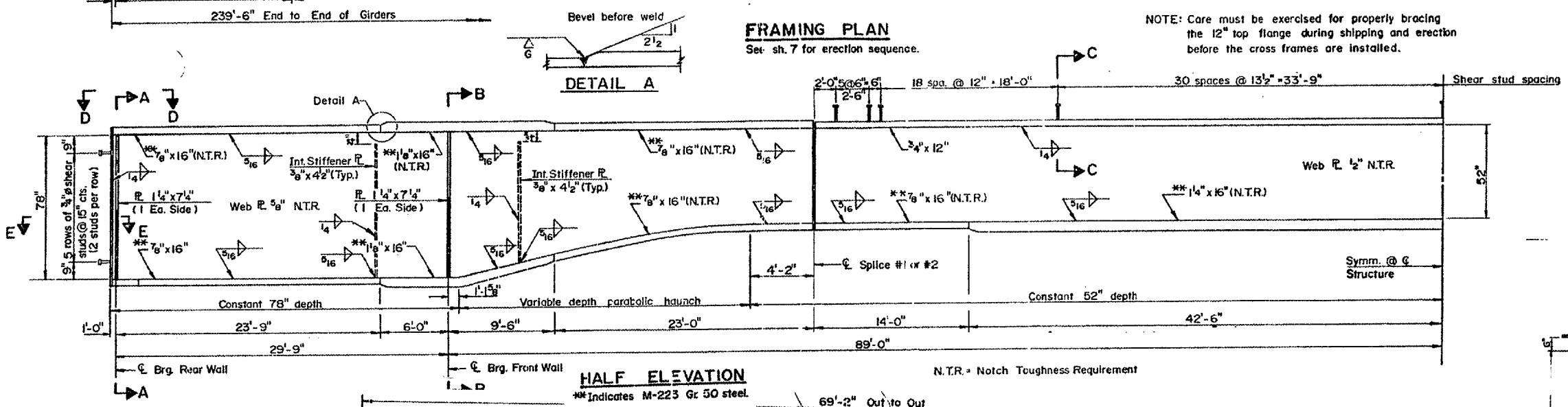
A
CF₂ = 3'-0"
CF₃ = 3'-3"
CF₄ = 5'-0"

FRAMING PLAN
See sh. 7 for erection sequence.

NOTE: Care must be exercised for properly bracing the 12" top flange during shipping and erection before the cross frames are installed.

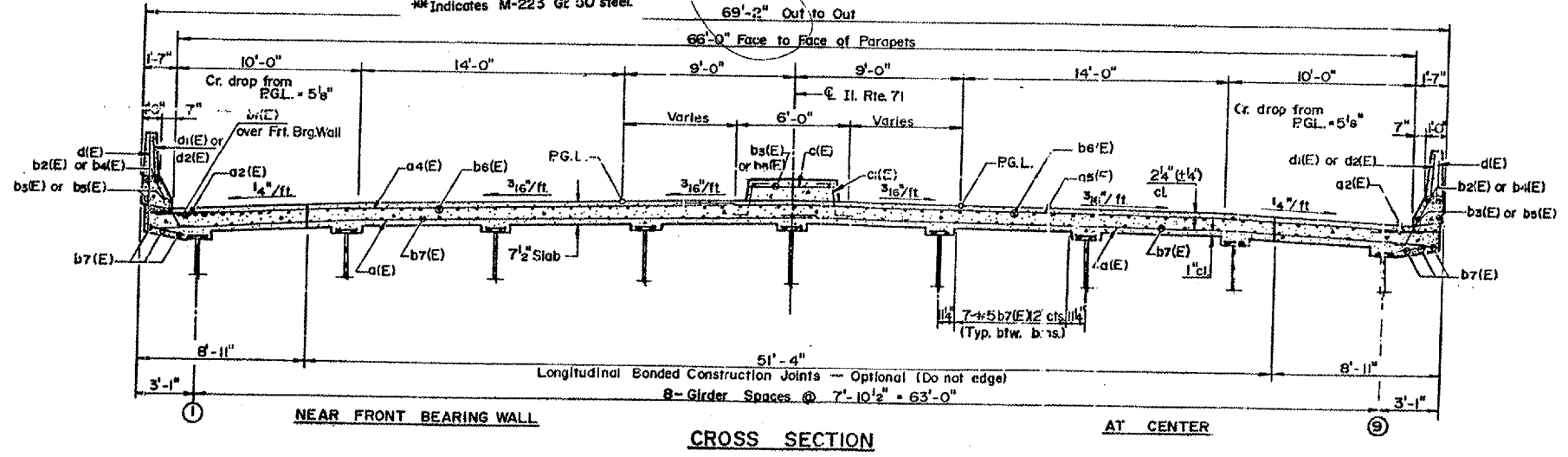


DETAIL A



HALF ELEVATION
**Indicates M-223 Gr 50 steel

N.T.R. = Notch Toughness Requirement



CROSS SECTION

REVISIONS	
NAME	DATE

ILLINOIS DEPARTMENT OF TRANSPORTATION
**EXISTING STRUCTURE PLANS
FOR INFORMATION ONLY**
S.N. 050-0203
SCALE: VERT. DATE 6/21/04
DRAWN BY CHECKED BY