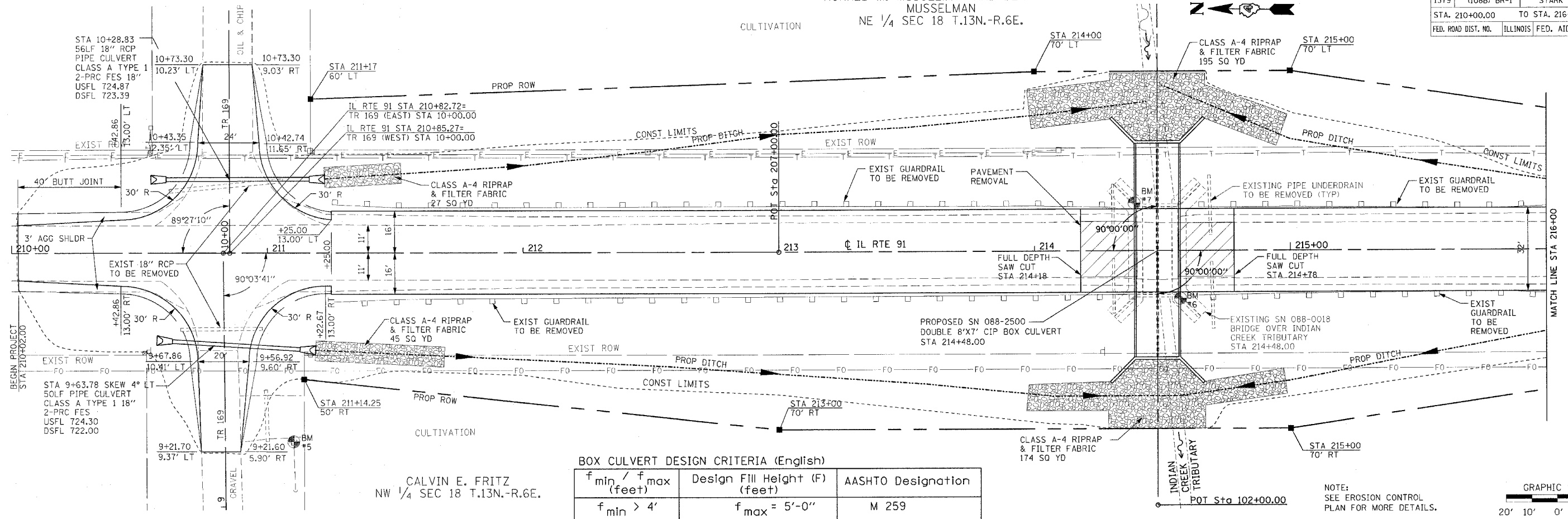


CONTRACT NO. 68074				
F.A.S. RTE.	SECTION	COUNTY	TOTAL SHEETS	SHEET NO.
1379	(108B) BR-1	STARK	33	9
STA. 210+00.00		TO STA. 216+00.00		
FED. ROAD DIST. NO. ILLINOIS FED. AID PROJECT				

RONALD M. MUSSELMAN AND DEANNA MUSSELMAN  
NE 1/4 SEC 18 T.13N.-R.6E.



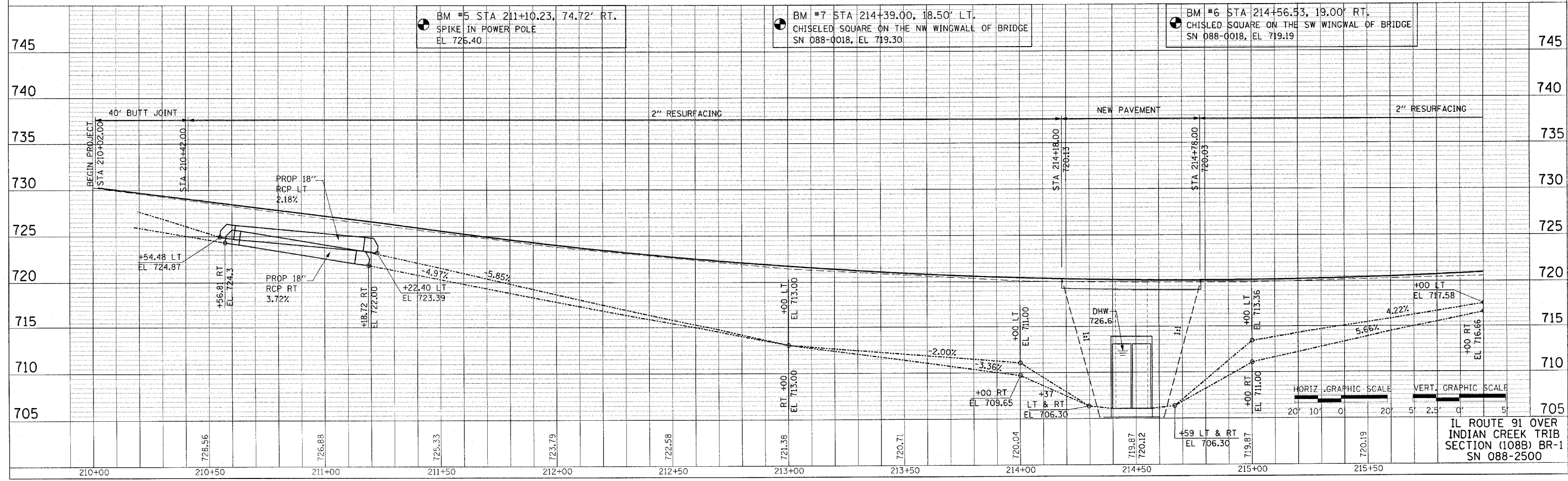
**BOX CULVERT DESIGN CRITERIA (English)**

$f_{min} / f_{max}$ (feet)	Design Fill Height (F) (feet)	AASHTO Designation
$f_{min} > 4'$	$f_{max} = 5'-0''$	M 259

CALVIN E. FRITZ  
NW 1/4 SEC 18 T.13N.-R.6E.

NOTE: SEE EROSION CONTROL PLAN FOR MORE DETAILS.

GRAPHIC SCALE  
20' 10' 0' 20'



IL ROUTE 91 OVER INDIAN CREEK TRIB SECTION (108B) BR-1 SN 088-2500

DATE: \_\_\_\_\_ BY: \_\_\_\_\_  
PROJECT: \_\_\_\_\_  
SHEET NO.: \_\_\_\_\_

DATE: \_\_\_\_\_ BY: \_\_\_\_\_  
PROJECT: \_\_\_\_\_  
SHEET NO.: \_\_\_\_\_