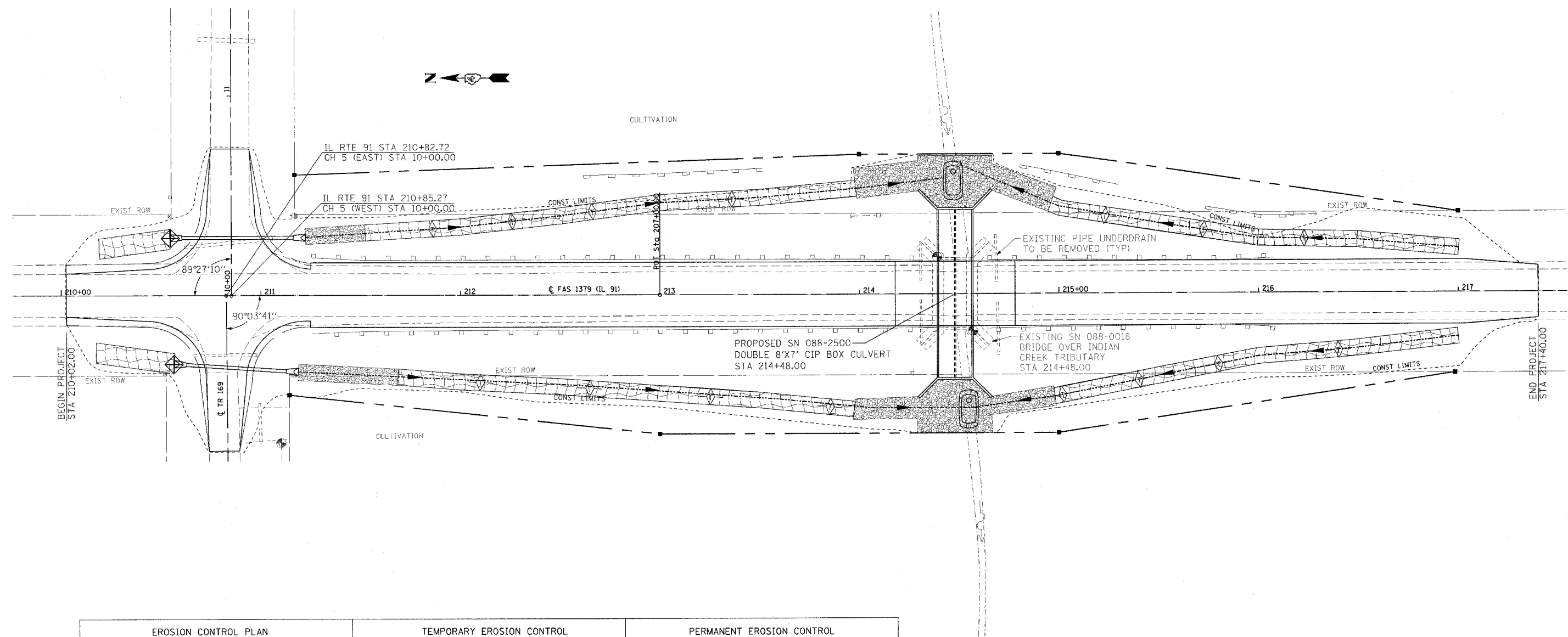
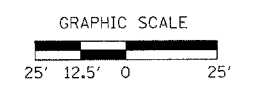


CONTRACT NO. 68074				
FAS	SECTION	COUNTY	TOTAL SHEETS	SHEET NO.
1379	(108B) BR-1	STARK	33	11
STA. 210+02		TO STA. 217+40		
FED. ROAD DIST. NO.		ILLINOIS		IL 91



EROSION CONTROL PLAN	TEMPORARY EROSION CONTROL	PERMANENT EROSION CONTROL
<p>PRIOR TO BEGINNING EARTHWORK OR STRUCTURE REMOVAL, PERIMETER EROSION BARRIER AND SEDIMENT BASINS SHALL BE PLACED.</p> <p>TEMPORARY DITCH CHECKS, AND INLET AND PIPE PROTECTION SHALL BE PLACED IMMEDIATELY UPON DISTURBANCE OF EXISTING SLOPES.</p> <p>AFTER A PORTION OF THE SITE HAS CEASED IN CONSTRUCTION ACTIVITY, TEMPORARY SEEDING SHALL BE PLACED THERE AS SOON AS POSSIBLE. IN AREAS WHERE CONSTRUCTION WILL BE INACTIVE FOR 21 DAYS OR MORE, TEMPORARY SEEDING MUST BE PLACED BY THE 14TH DAY OF INACTIVITY.</p> <p>CLASS A4 RIP RAP, CLASS 3 SEEDING, AND EROSION CONTROL BLANKET SHALL BE PLACED IMMEDIATELY AFTER FINAL GRADING FOR PROPOSED DITCHES.</p>	<p> PERIMETER EROSION BARRIER TEMPORARY DITCH CHECK INLET AND PIPE PROTECTION SEDIMENT BASIN NOT SHOWN TEMPORARY SEEDING </p> <p>THESE ITEMS SHALL BE KEPT IN ACCORDANCE WITH THE EROSION CONTROL SPECIAL PROVISION, STORM WATER POLLUTION PREVENTION PLAN, HIGHWAY STANDARD 280001, SECTION 280 OF THE STANDARD SPECIFICATIONS FOR ROAD AND BRIDGE CONSTRUCTION, AND THE DIRECTION OF THE RESIDENT ENGINEER.</p>	<p> CLASS A4 RIPRAP EROSION CONTROL BLANKET NOT SHOWN SEEDING, CLASS 3 </p> <p>THESE ITEMS SHALL BE KEPT IN ACCORDANCE WITH SECTIONS 250, 251, 281, AND 282 OF THE STANDARD SPECIFICATIONS FOR ROAD AND BRIDGE CONSTRUCTION AND THE DIRECTION OF THE RESIDENT ENGINEER.</p>



REVISIONS	
NAME	DATE

ILLINOIS DEPARTMENT OF TRANSPORTATION

**INDIAN CREEK TRIBUTARY
SEC (108B) BR-1
EROSION CONTROL PLAN**

SCALE: 1"=25'
DATE: 06-02-03

DRAWN BY: BAD
CHECKED BY: JLG