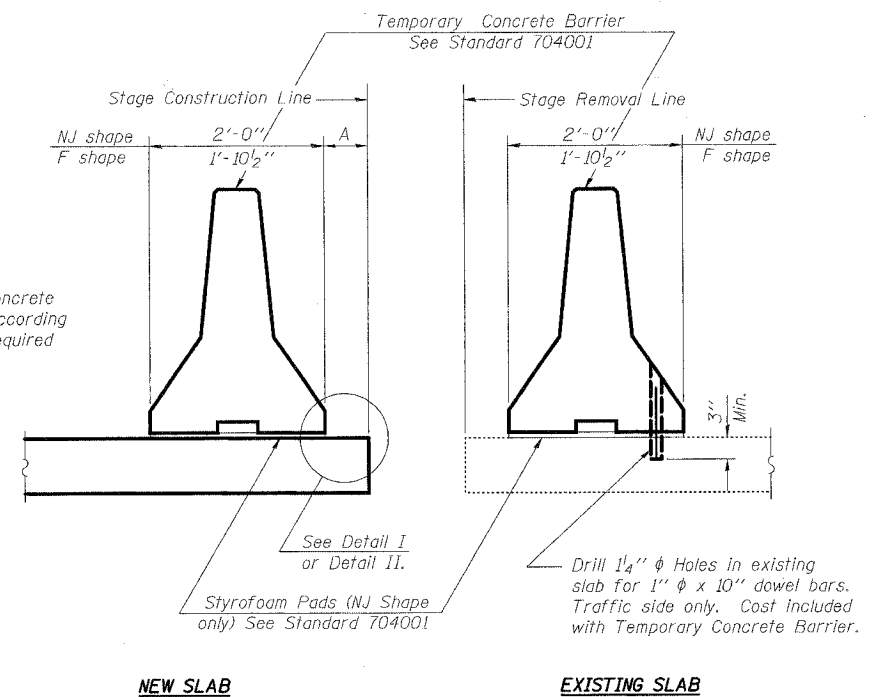


STATE OF ILLINOIS  
DEPARTMENT OF TRANSPORTATION

FAS RTE	SECTION	COUNTY	TOTAL SHEETS	SHEET NO.
1379	(108B)BR-1	STARK	33	27
STA 214+48.00				ILLINOIS

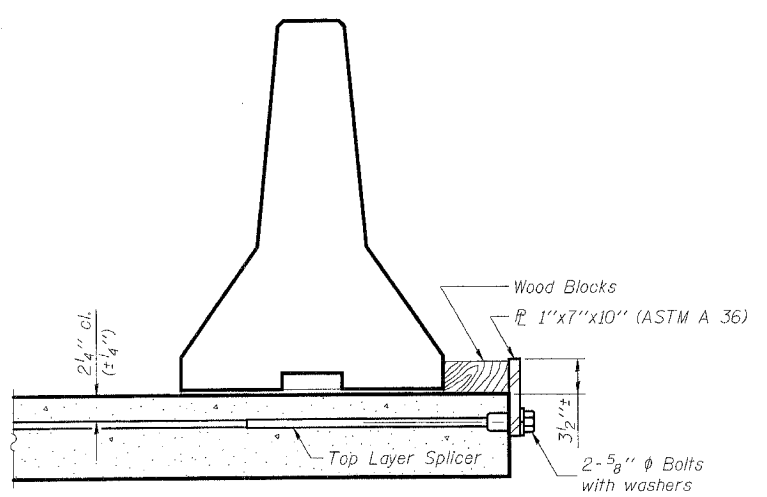
When "A" is 3'-6" or less, the temporary concrete barrier shall be anchored to the new slab according to Detail I or Detail II. No anchorage is required when "A" is greater than 3'-6".



SECTIONS THRU SLAB

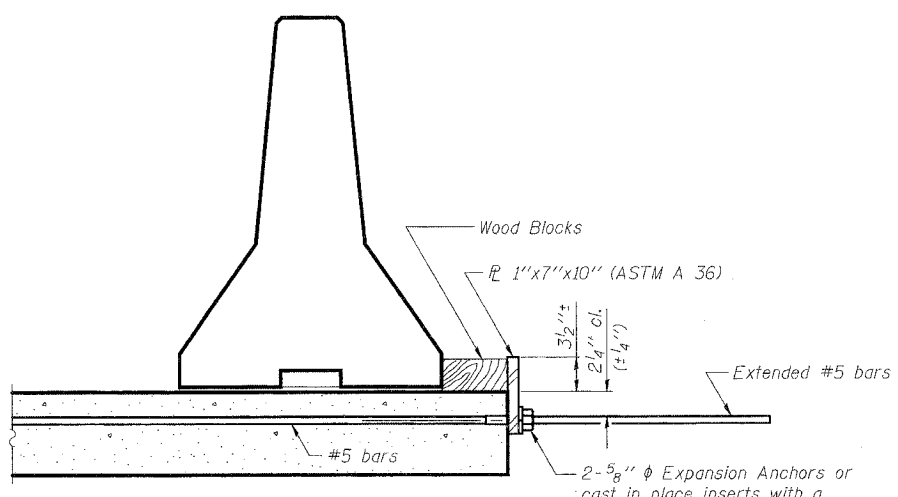
NOTES

- Detail I - With Bar Splicer or Couplers:  
Connect one (1) 1"x7"x10" steel PL to the top layer of couplers with 2-5/8" φ bolts screwed to coupler at approximate C of each barrier panel.
- Detail II - With Extended Reinforcement Bars:  
Connect one (1) 1"x7"x10" steel PL to the concrete slab with 2-5/8" φ Expansion Anchors or cast in place inserts spaced between the top layer of reinforcement at approximate C of each barrier panel.  
Cost of anchorage is included with Temporary Concrete Barrier.



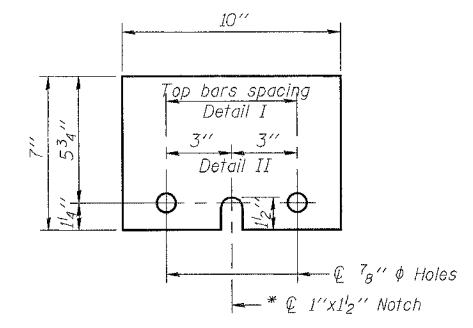
DETAIL I

The 1"x7"x10" Plate shall not be removed until Stage II Construction forms and reinforcement bars are in place.



DETAIL II

The 1"x7"x10" Plate shall not be removed until Stage II Construction forms and all reinforcement bars are in place and the concrete is ready to be placed.



PL 1"x7"x10"

\* Required only with Detail II

**TEMPORARY CONCRETE BARRIER  
FOR STAGE CONSTRUCTION  
FAS 1379 (IL RTE 91) OVER  
INDIAN CREEK TRIBUTARY  
SECTION (108B)BR-1  
STARK COUNTY STA 214+48.00  
SN 088-2500**

DESIGNED	JLG
CHECKED	GEP
DRAWN	BAD
CHECKED	JLG

R-27 9-01-03