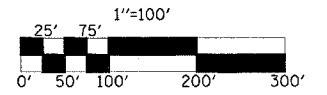
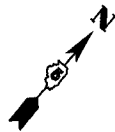
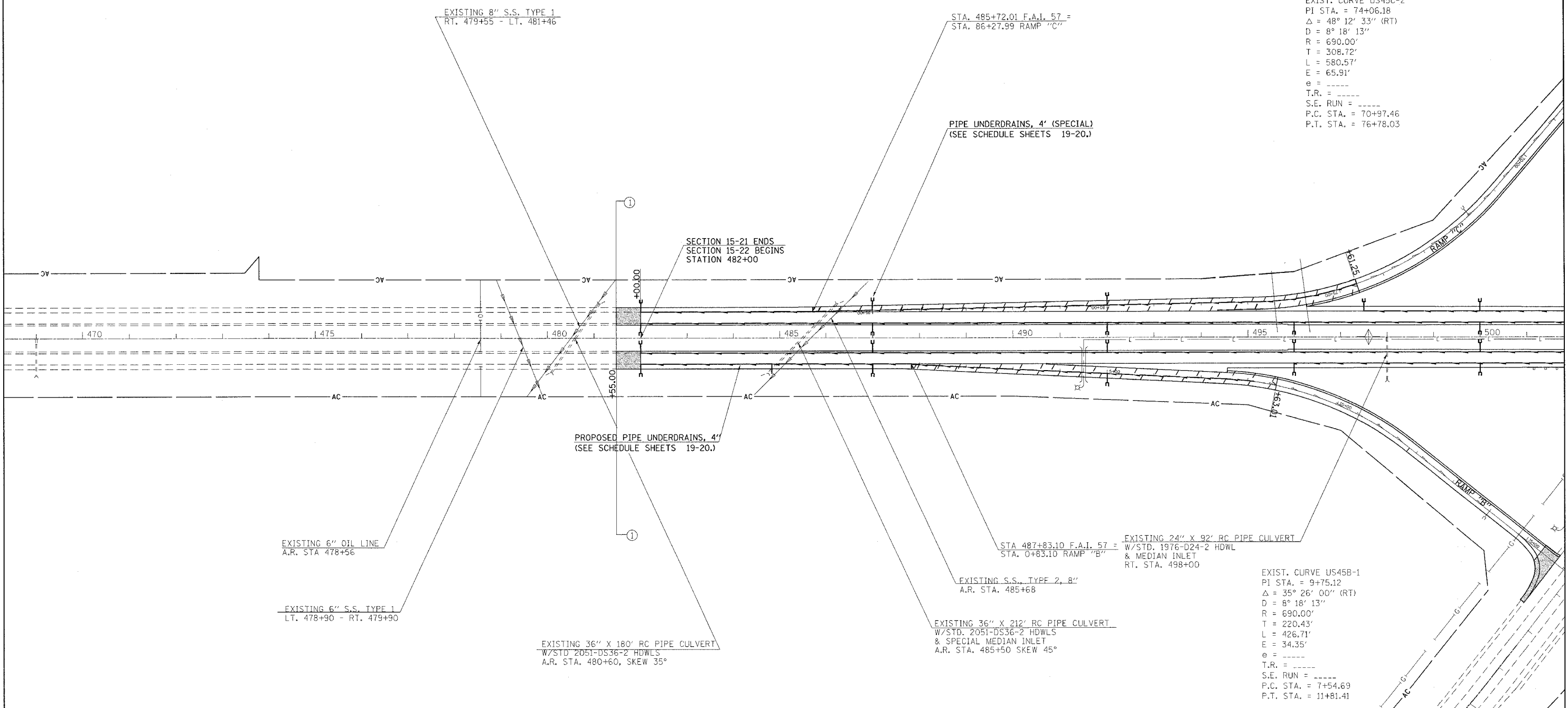


T11N, R7E, SECTION 2

F.A.I. RTE.	SECTION	COUNTY	TOTAL SHEETS	SHEET NO.
57	*	**	76	33
STA. 469+00		TO STA. 501+00		
FED. ROAD DIST. NO.		ILLINOIS FED. AID PROJECT		
CONTRACT NO. 70028				
• (15,18-20) RS-2 (15-22) RS-2				
••COLES & CUMBERLAND				



EXIST. CURVE US45C-2
 PI STA. = 74+06.18
 $\Delta = 48^\circ 12' 33''$ (RT)
 $D = 8^\circ 18' 13''$
 $R = 690.00'$
 $T = 308.72'$
 $L = 580.57'$
 $E = 65.91'$
 $e = \text{-----}$
 $T.R. = \text{-----}$
 $S.E. \text{ RUN} = \text{-----}$
 $P.C. \text{ STA.} = 70+97.46$
 $P.T. \text{ STA.} = 76+78.03$



- BITUMINOUS SURFACE REMOVAL, BUTT-JOINT
(FOR BUTT-JOINT DETAILS SEE SHEETS 48-49.)
- BITUMINOUS SURFACE REMOVAL, 3/4"

REVISIONS	
NAME	DATE

ILLINOIS DEPARTMENT OF TRANSPORTATION

SCALE: _____ DATE _____

DRAWN BY _____ CHECKED BY _____