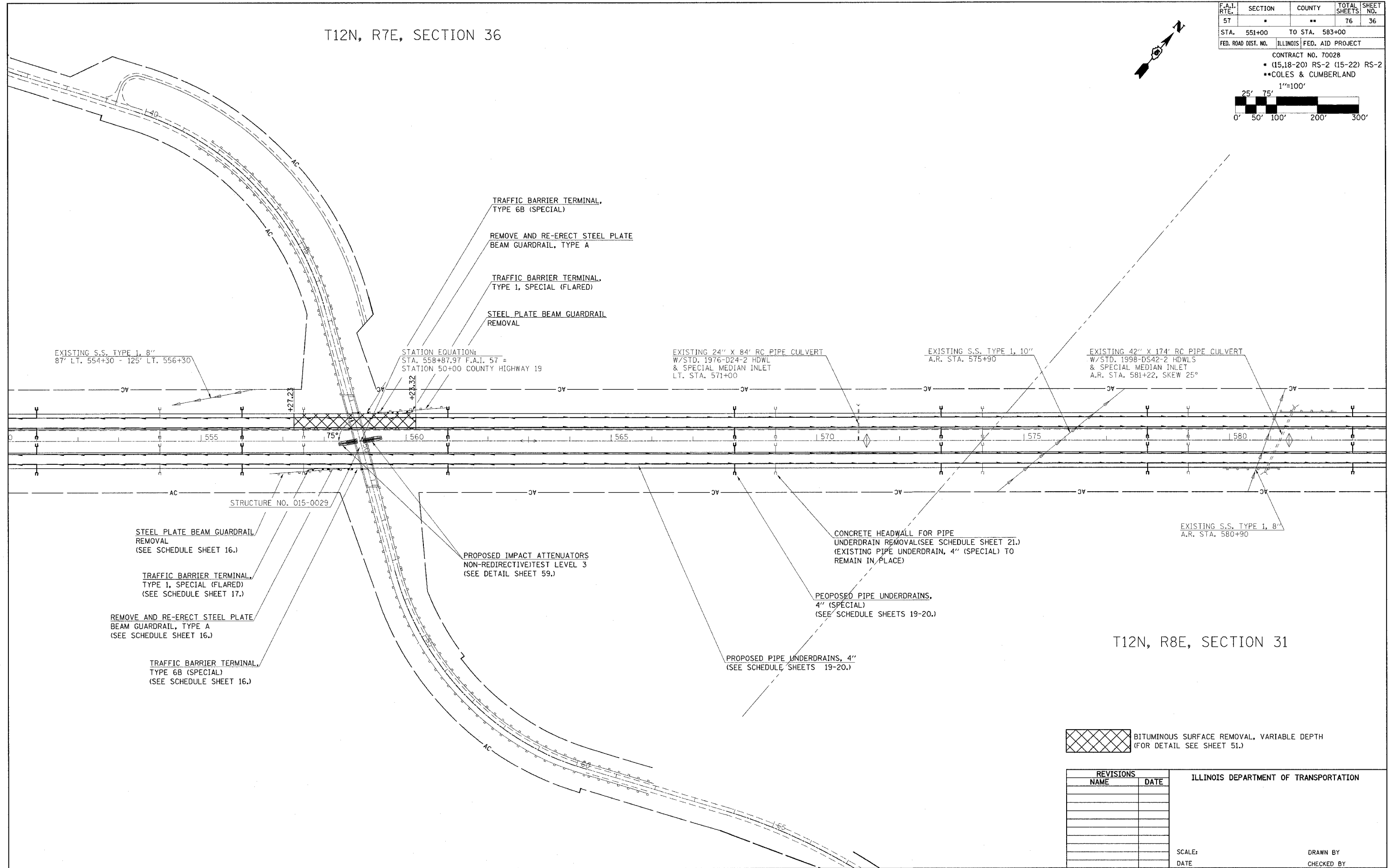



T12N, R7E, SECTION 36

F.A.I. RTE.	SECTION	COUNTY	TOTAL SHEETS	SHEET NO.
57		**	76	36
STA. 551+00	TO STA. 583+00			
FED. ROAD DIST. NO.	ILLINOIS	FED. AID PROJECT		
CONTRACT NO. 70028				
• (15,18-20) RS-2 (15-22) RS-2				
**COLES & CUMBERLAND				
1"=100'				
0' 50' 100' 200' 300'				



T12N, R8E, SECTION 31

 BITUMINOUS SURFACE REMOVAL, VARIABLE DEPTH (FOR DETAIL SEE SHEET 51.)

REVISIONS	
NAME	DATE

ILLINOIS DEPARTMENT OF TRANSPORTATION

SCALE: _____ DATE _____

DRAWN BY _____ CHECKED BY _____