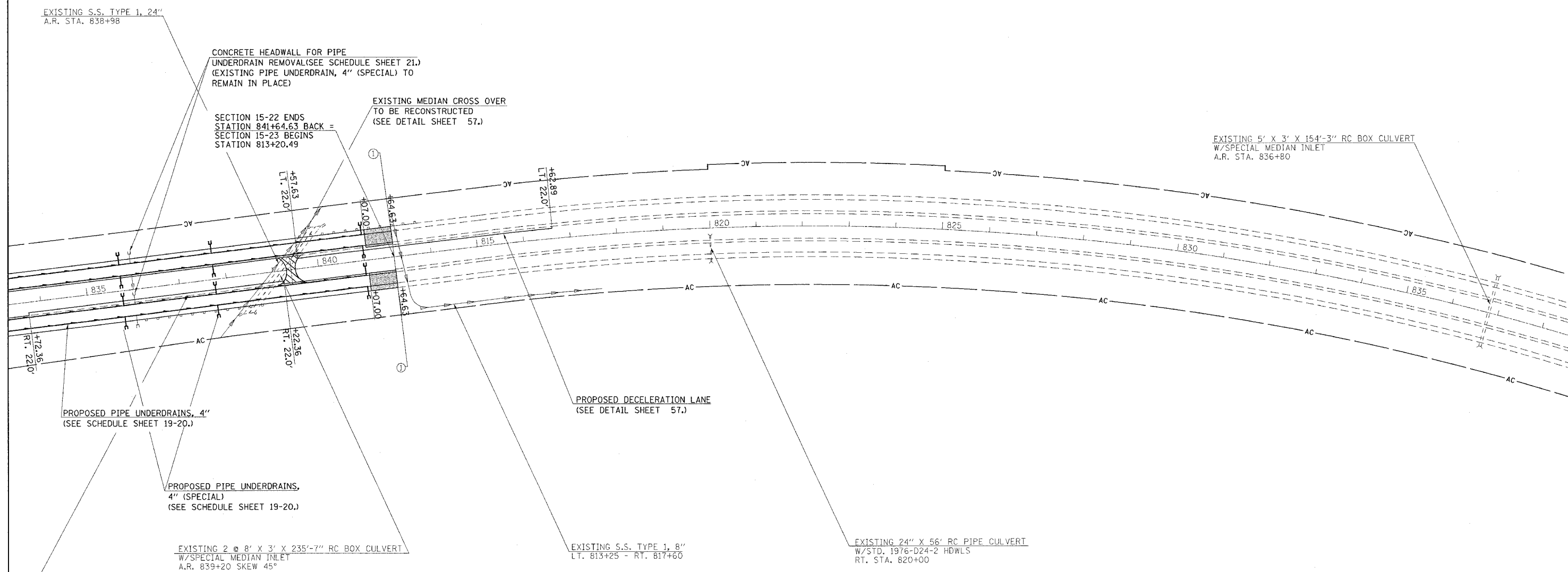
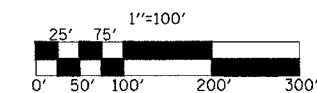


F.A.I. RTE.	SECTION	COUNTY	TOTAL SHEETS	SHEET NO.
57		**	76	46
STA. 834+00		TO STA. 838+00B		
FED. ROAD DIST. NO.	ILLINOIS FED. AID PROJECT			

CONTRACT NO. 70028
 (15,18-20) RS-2 (15-22) RS-2
 **COLES & CUMBERLAND



EXISTING S.S. TYPE 1, 24"
A.R. STA. 838+98

CONCRETE HEADWALL FOR PIPE
UNDERDRAIN REMOVAL (SEE SCHEDULE SHEET 21.)
(EXISTING PIPE UNDERDRAIN, 4" (SPECIAL) TO
REMAIN IN PLACE)

SECTION 15-22 ENDS
STATION 841+64.63 BACK =
SECTION 15-23 BEGINS
STATION 813+20.49

EXISTING MEDIAN CROSS OVER
TO BE RECONSTRUCTED
(SEE DETAIL SHEET 57.)

EXISTING 5' X 3' X 154'-3" RC BOX CULVERT
W/SPECIAL MEDIAN INLET
A.R. STA. 836+80

PROPOSED DECELERATION LANE
(SEE DETAIL SHEET 57.)

PROPOSED PIPE UNDERDRAINS,
4" (SPECIAL)
(SEE SCHEDULE SHEET 19-20.)

EXISTING 2 @ 8' X 3' X 235'-7" RC BOX CULVERT
W/SPECIAL MEDIAN INLET
A.R. 839+20 SKEW 45°

EXISTING S.S. TYPE 1, 8"
LT. 813+25 - RT. 817+60

EXISTING 24" X 56" RC PIPE CULVERT
W/STD. 1976-D24-2 HDWLS
RT. STA. 820+00

PROPOSED DECELERATION LANE
(SEE DETAIL SHEET 57.)

BITUMINOUS SURFACE REMOVAL
 BITUMINOUS SURFACE REMOVAL, BUTT-JOINT
 (FOR BUTT-JOINT DETAILS SEE SHEET 51.)

REVISIONS		ILLINOIS DEPARTMENT OF TRANSPORTATION
NAME	DATE	
		SCALE: DATE

T12N, R8E, SECTION 9

DRAWN BY
CHECKED BY