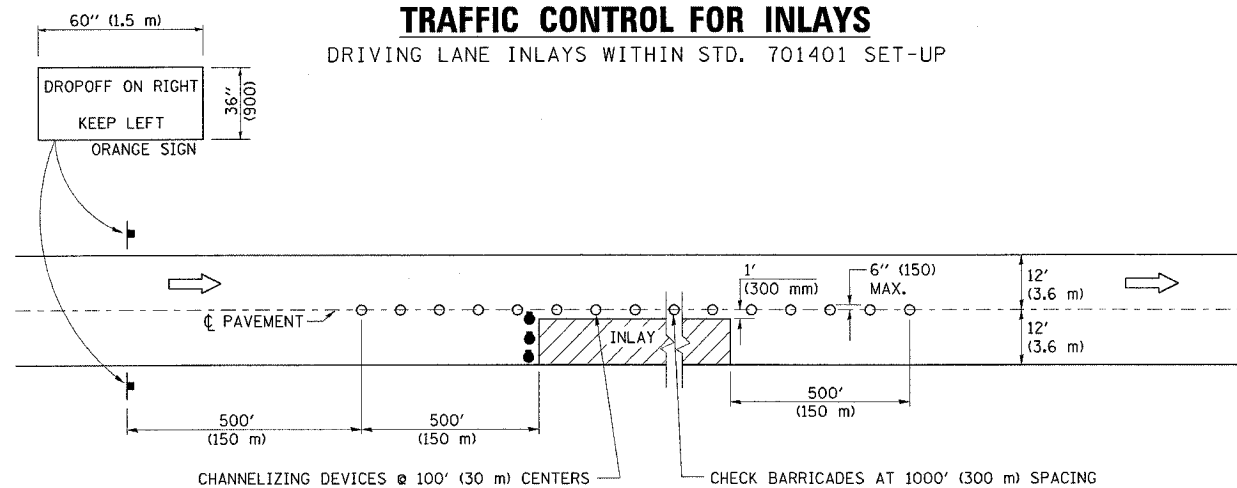


F.A.I. RTE.	SECTION	COUNTY	TOTAL SHEETS	SHEET NO.
57		**	76	48

CONTRACT NO. 70028
 • (15-18-20)RS-2 & (15-22)RS-2
 •• COLES & CUMBERLAND

TRAFFIC CONTROL FOR INLAYS

DRIVING LANE INLAYS WITHIN STD. 701401 SET-UP



TRAFFIC CONTROL DETAILS NOT SHOWN SHALL BE ACCORDING TO TRAFFIC CONTROL STANDARD 701401.

AT RAMPS, THE INLAY WORK AREA SHALL BE STAGED TO COORDINATE WITH STANDARD 701411. TEMPORARY RAMPS THROUGH THE INLAY AREA TO MAINTAIN RAMP TRAFFIC IN LIEU OF STAGING WILL NOT BE ALLOWED.

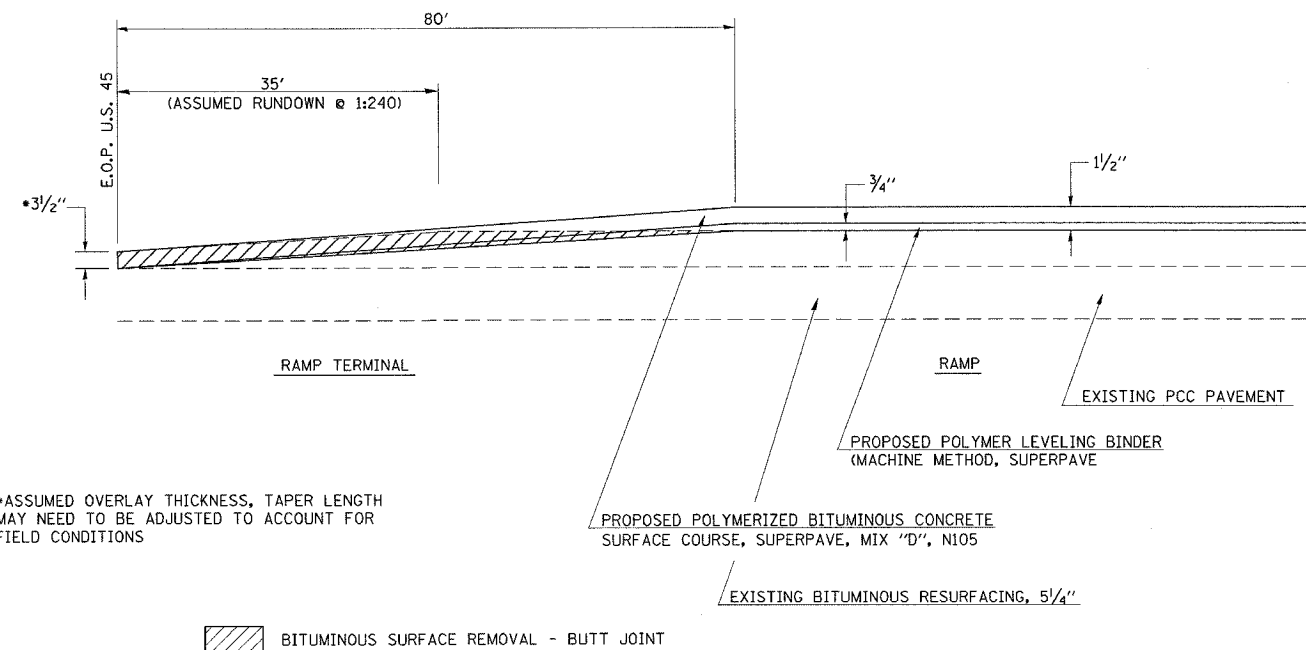
SYMBOLS

- ➡ DIRECTION OF TRAVEL
- DRUMS WITH FLASHING LIGHTS
- 42" (1.07 m) HIGH INTENSITY REFLECTORIZED CONE, DRUMS OR VERTICAL BARRICADES

ALL DIMENSIONS ARE IN INCHES (MILLIMETERS) UNLESS OTHERWISE SHOWN.

	NAME	DATE	REVISIONS	
			NAME	DATE
DESIGNED				
CHECKED	D.L.P.	10/00	K.A.G.	04/03
CADD NO.	F-5.10		K.A.G.	08/03

DETAIL OF BUTT JOINTS AT RAMPS A, B, C, & D I-57 / U.S. 45 INTERCHANGE (NEOGA)



*ASSUMED OVERLAY THICKNESS, TAPER LENGTH MAY NEED TO BE ADJUSTED TO ACCOUNT FOR FIELD CONDITIONS

BITUMINOUS SURFACE REMOVAL - BUTT JOINT