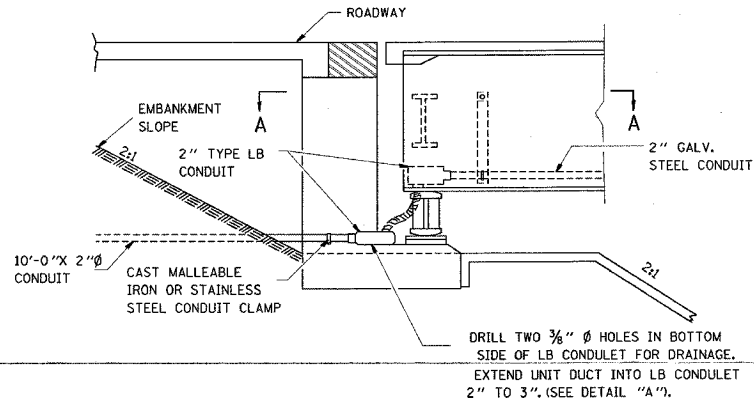
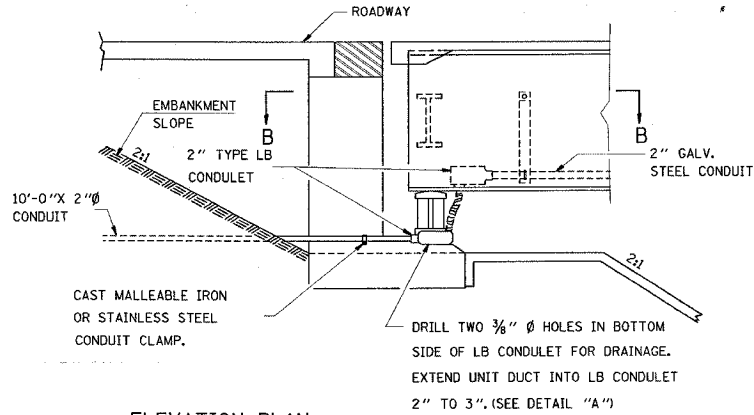


FAP ROUTE	SECTION	COUNTY	TOTAL SHEETS	SHEET NO.
•	••	•••	7	7

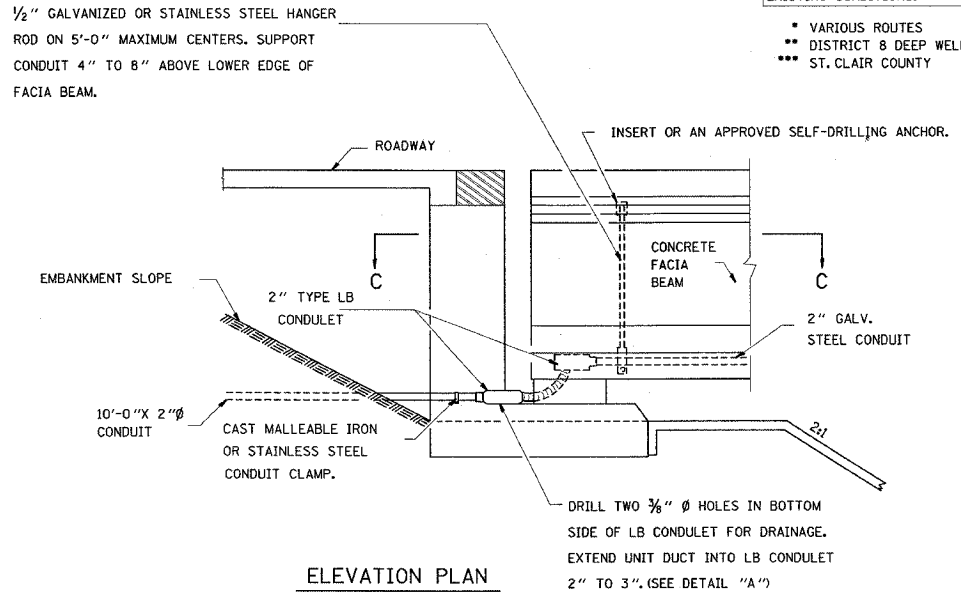
STA. TO STA.  
EXISTING CONDITIONS:  
• VARIOUS ROUTES  
•• DISTRICT 8 DEEP WELLS 2005-1  
••• ST. CLAIR COUNTY



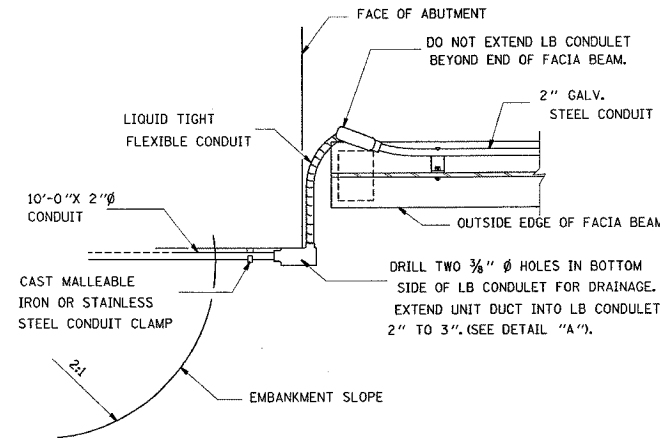
ELEVATION PLAN



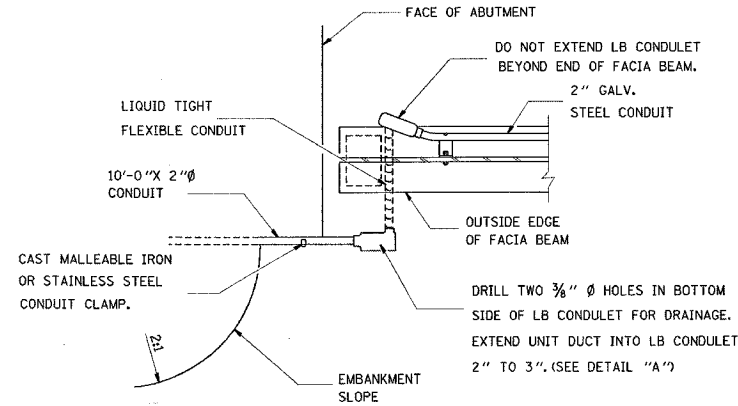
ELEVATION PLAN



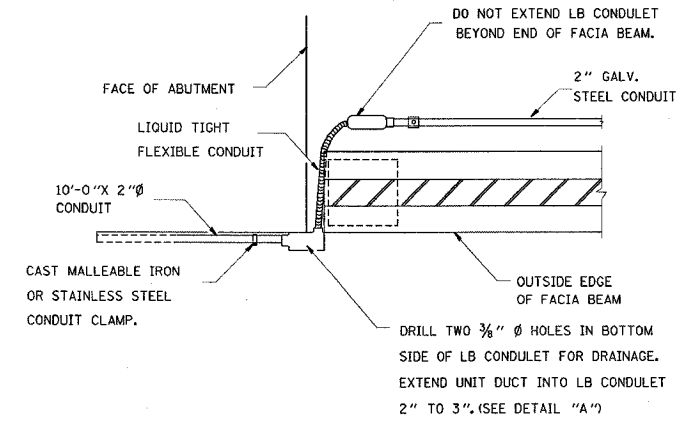
ELEVATION PLAN



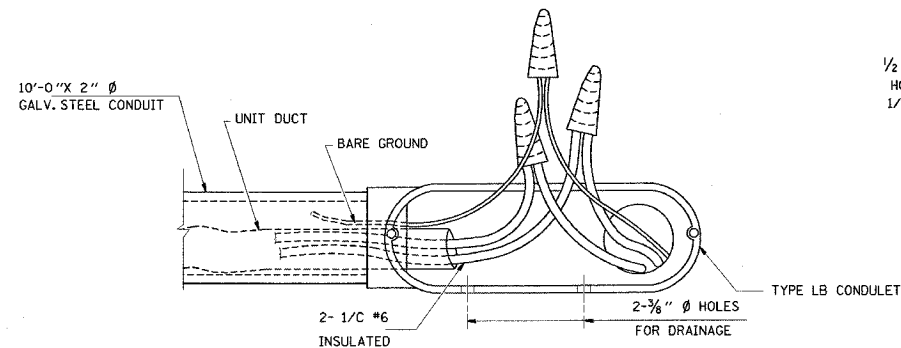
SECTION A-A



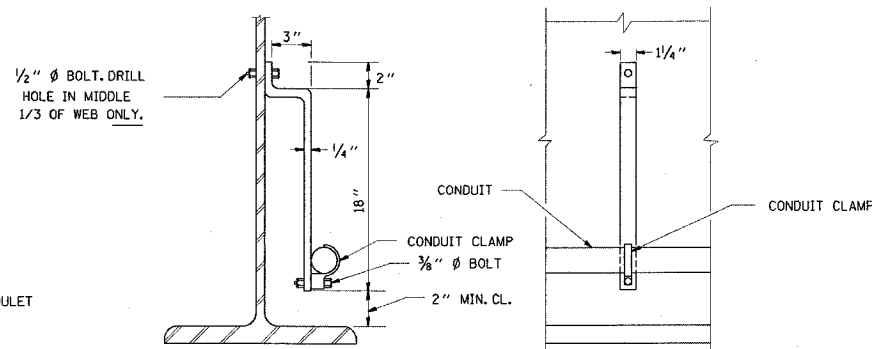
SECTION B-B



SECTION C-C

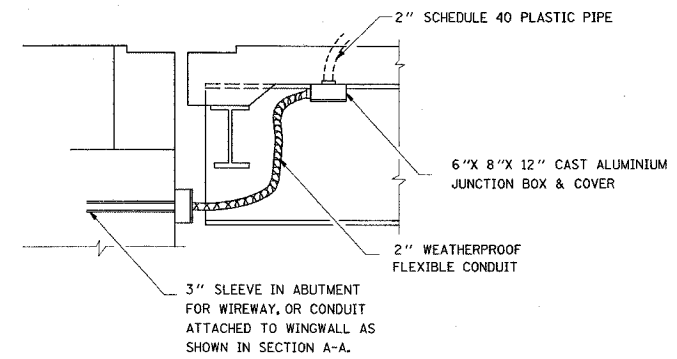


DETAIL "A"



CONDUIT SUPPORT BRACKET

CONDUIT CLAMPS SHALL BE MALLEABLE IRON, LOCKNUTS, BOLTS, AND WASHERS SHALL BE STAINLESS STEEL. 1/4" STEEL BRACKET SHALL BE HOT-DIPPED GALVANIZED AFTER FABRICATION. LOCATE ON 8'-0" CENTERS.



SECTION AT ABUTMENTS

REVISIONS	
NAME	DATE

ILLINOIS DEPARTMENT OF TRANSPORTATION  
**CONDUIT DETAILS**  
VARIOUS ROUTES  
DISTRICT 8 DEEP WELLS 2005-1  
ST. CLAIR COUNTY  
DRAWN BY:

PLOT DATE: Friday July 30, 2004 @ 3:41:30 PM

(This Text Construction Lines)